

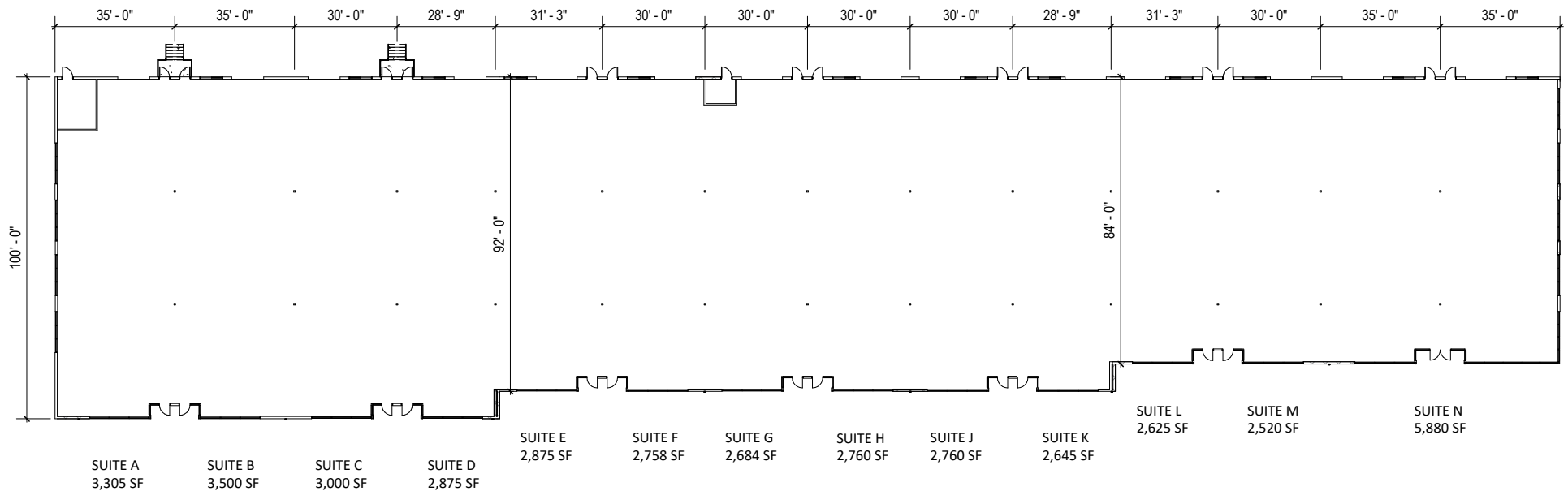


Total SF Available:
2,520 up to 40,187 SF

Note: This space plan is subject to existing field conditions. This drawing is proprietary and the exclusive property of St. John Properties, Inc. Any duplications, distribution, or other unauthorized use is strictly prohibited.

Coming soon! New flex/R&D with dock and drive-in loading doors

LOADING ZONE



PARKING

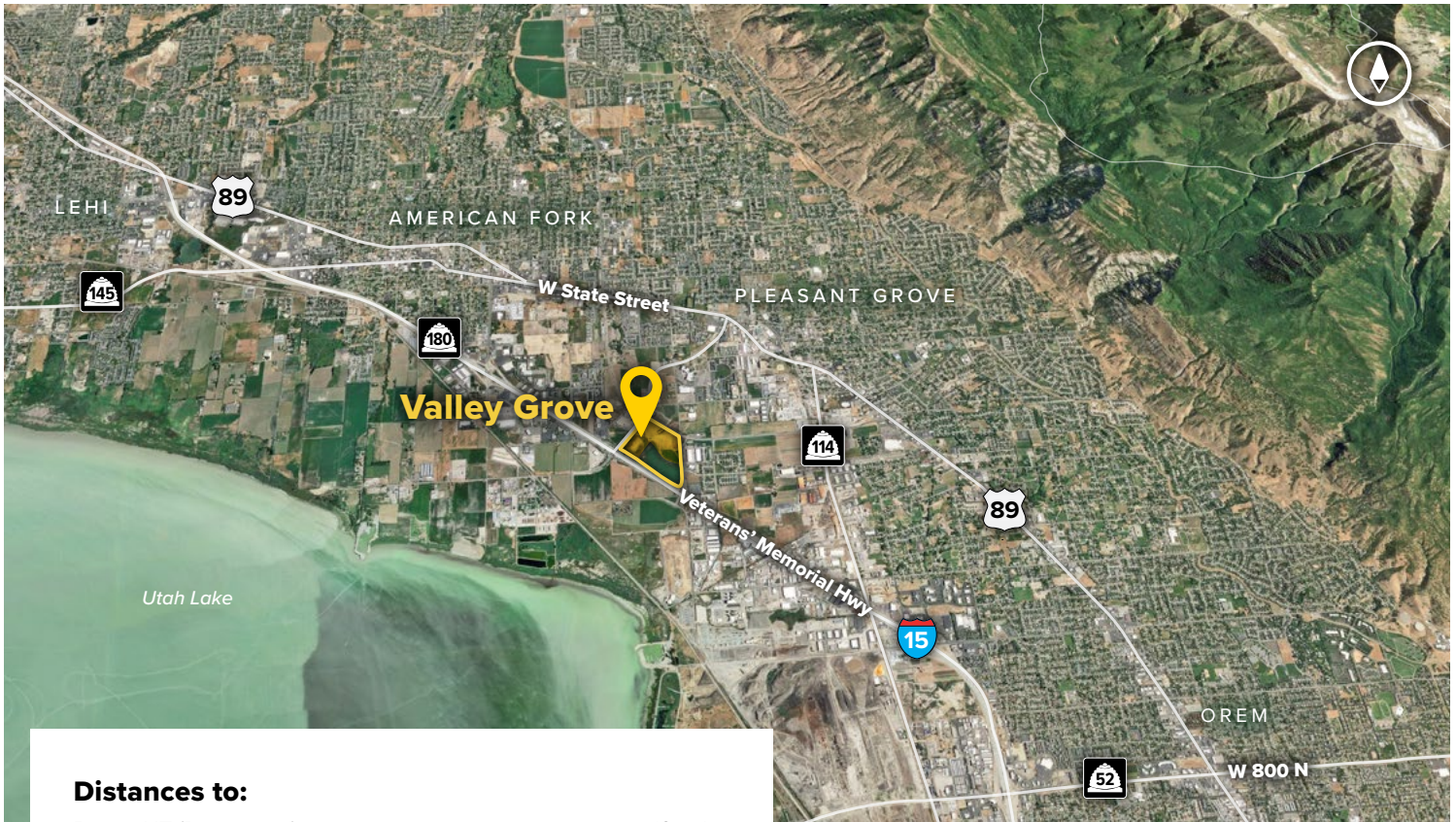


Flex/R&D

Direct-Entry Flexible Space

Flex/R&D Buildings	
989 South 1300 West	40,187 SF
2315 West 700 South	48,287 SF
2415 West 700 South	48,287 SF
Flex/R&D Specifications	
Suite Sizes	Up to 48,287 SF
Ceiling Height	18 ft. clear minimum
Offices	Built to suit
Parking	4 spaces per 1,000 SF





Distances to:

- Provo, UT (Downtown) 12 miles
- Interstate 215 25 miles
- Salt Lake City, UT (Downtown) 34.5 miles
- Salt Lake City International Airport 38 miles



Scan now to take a virtual tour, download floor plans and more!

Contact Us

Scott Gifford

Vice President of Leasing
 SGifford@sjpi.com | 801.899.7991

Daniel Thomas

Regional Partner
 DThomas@sjpi.com | 801.899.7991

Utah Office:

1064 S North County Boulevard | Suite 190
 Pleasant Grove, Utah 84062

801.899.7991 | SJPI.COM/UTAH



About St. John Properties

St. John Properties, Inc. is one of the nation's largest and most successful privately held commercial real estate firms. Founded in 1971, the vertically-integrated company develops, owns and manages office, flex/research and development, warehouse, retail and multifamily space nationwide.

Connect with us @stjohnprop



This information contained in this publication has been obtained from sources believed to be reliable. St. John Properties makes no guarantee, warranty or representation about this information. Any projections, opinions, assumptions or estimates used here are for example only and do not represent the current or future performance of the property. Interested parties should conduct an independent investigation to determine whether the property suits their needs. REV 05/26