

**Glen Burnie Business Center**

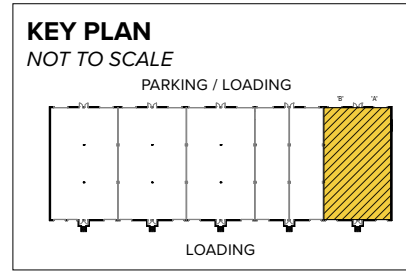
7221 Grayburn Drive | Glen Burnie, MD 21061

Suites A-B

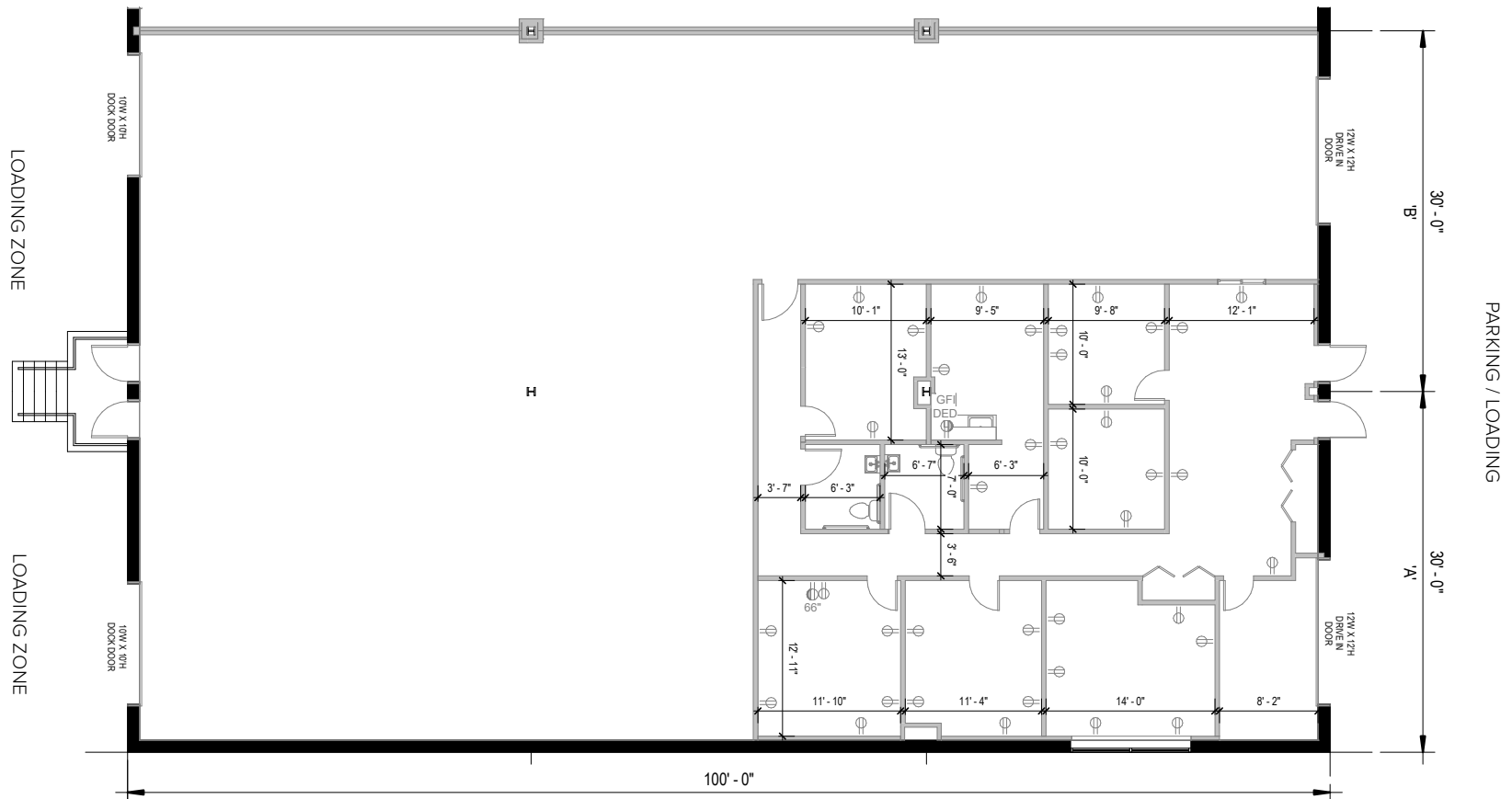


**Total SF Available:**  
6,000 SF

End unit space with 1,673 sq. ft. office space, 4,327 sq. ft. warehouse with 10'x10' dock doors (2), and 12'x12' drive-in doors (2)



*Note: This space plan is subject to existing field conditions. This drawing is proprietary and the exclusive property of St. John Properties, Inc. Any duplications, distribution, or other unauthorized use is strictly prohibited.*



## About Glen Burnie Business Center

Glen Burnie Business Center is a 21-acre mixed-use business community located near the intersection of Dorsey Road and Route 648 (Baltimore-Annapolis Boulevard), less than 3 miles from MD Route 2, Interstate 97, Interstate 695, and BWI Airport.

The unified architecture of St. John Properties' seven buildings, comprising more than 310,000 square feet of flex/R&D, offer tenant sizes from 3,000 square feet up to 63,650 square feet of space. Thirty foot wide column spans combined with 18-20 foot ceiling heights offer maximum flexibility.



### Flex/R&D Buildings

132 8th Avenue	40,560 SF	LEED SILVER
150 Penrod Court	37,000 SF	
175 Penrod Court	55,800 SF	
180 Penrod Court	63,650 SF	
190 Penrod Court	44,000 SF	
200 Penrod Court	39,000 SF	
7221 Grayburn Drive	30,000 SF	

### Flex/R&D Specifications

LEED ( <i>Select buildings</i> )	Certified Silver
Suite Sizes	3,000 up to 63,650 SF
Ceiling Height	18-20 ft. clear minimum
Offices	Build to suit
Parking	2.5 spaces per 1,000 SF
Heat	Gas
Roof	Gypsum, steel deck
Construction	Brick on block
Loading	Dock or drive-in
Zoning	C-4



For more information on Glen Burnie Business Center, visit: [sjpi.com/glenburniebusiness](http://sjpi.com/glenburniebusiness)



**Distances to:**

- Interstate 97 ..... 1 mile
- MD Route 2 ..... 1 mile
- BWI Airport ..... 3 miles
- Interstate 695 (Baltimore Beltway) ..... 3 miles
- Baltimore, MD (Downtown) ..... 9 miles
- Interstate 95 ..... 9 miles
- Washington, D.C. (Downtown) ..... 34 mile

# Contact Us

For additional leasing information or to schedule a tour, contact:

**Claire Cobert Metz**

Leasing Representative

CMetz@sjpi.com | 410.369.1274

**Corporate Headquarters:**

2560 Lord Baltimore Drive | Baltimore, MD 21244

**410.788.0100 | SJPI.COM**



Scan with your mobile device to take a virtual tour, download floor plans and more!

**About St. John Properties**

St. John Properties, Inc. is one of the nation's largest and most successful privately held commercial real estate firms. Founded in 1971, the vertically-integrated company develops, owns and manages office, flex/ research and development, warehouse, retail and multifamily space nationwide.

Connect with us @stjohnprop



*This information contained in this publication has been obtained from sources believed to be reliable. St. John Properties makes no guarantee, warranty or representation about this information. Any projections, opinions, assumptions or estimates used here are for example only and do not represent the current or future performance of the property. Interested parties should conduct an independent investigation to determine whether the property suits their needs. REV 03/26*