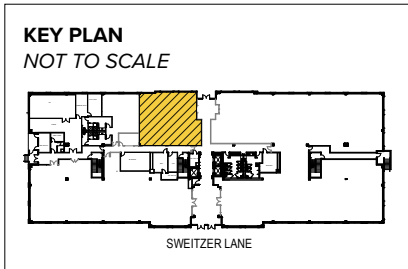


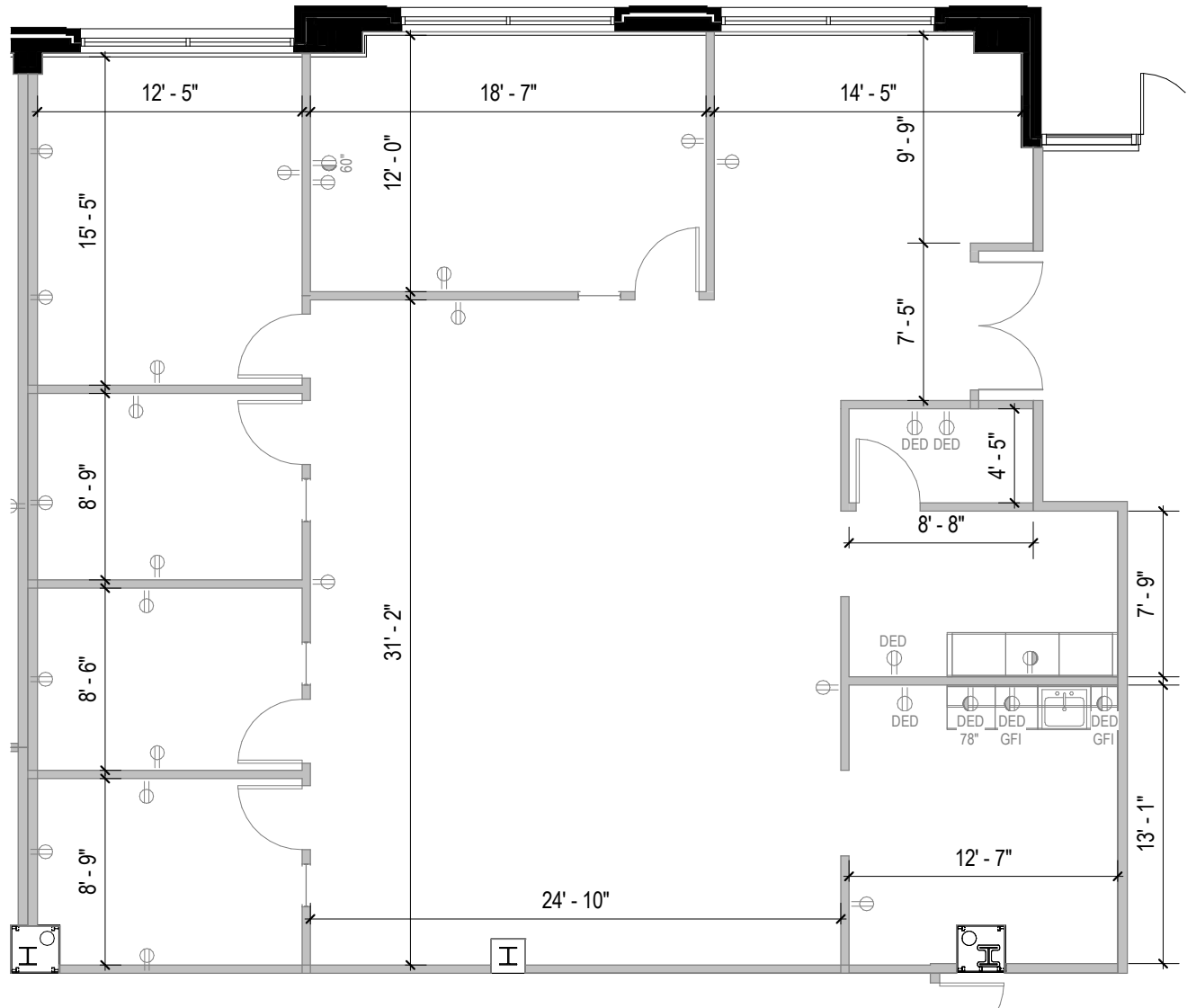


Total SF Available:
2,429 SF

First floor off-lobby suite with private offices (4) and conference room (1)



Note: This space plan is subject to existing field conditions. This drawing is proprietary and the exclusive property of St. John Properties, Inc. Any duplications, distribution, or other unauthorized use is strictly prohibited.



About 14400 Sweitzer Lane

14400 Sweitzer Lane is a headquarters-worthy 120,904 square foot Class 'A' office building located immediately off Interstate 95 at Konterra Drive. Building amenities include expansive window lines, an outdoor patio with seating, a tenant gym, and a self-service market.

- ▶ Two-story lobby with granite flooring
- ▶ Outdoor patio space
- ▶ Immediate access to Interstate 95 and Inter-county Connector (ICC) MD 200
- ▶ Less than 15 minutes from Fort Meade/NSA, NASA Goddard Space Flight Center and FDA headquarters

Multi-Story Class 'A' Office Space

Four-Story Class 'A' Office Building

14400 Sweitzer Lane 120,904 SF

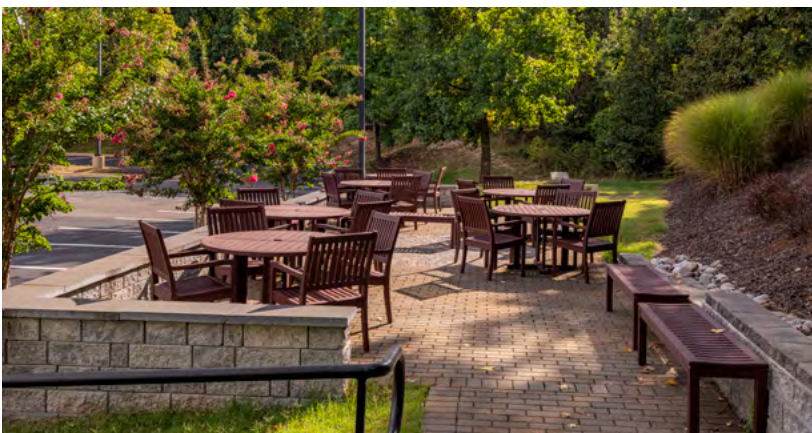
Four-Story Office Specifications

Suite Sizes	Up to 120,904 SF
Ceiling Height	9 ft. clear minimum
Offices	Built to suit
Parking	4 spaces per 1,000 SF
Elevator	3
Zoning	I-3

For more information on 14400 Sweitzer Lane, visit: sjpi.com/14400sweitzer

NEWLY RENOVATED!

Renovations include overall exterior upgrades, new fixtures and finishes, a tenant exclusive fitness center, plus a self-service market!





Distances to:

Interstate 95	5 mile
Inter-county Connector (ICC)/MD 200	4 miles
Interstate 295 (B.W. Parkway)	5 miles
Interstate 495	8 miles
Columbia, MD	9 miles
Washington, D.C.	11 miles
Fort Meade/NSA	12 miles
NASA Goddard	12 miles
Interstate 695 (Baltimore Beltway)	17 miles
BWI Airport	20 miles
Baltimore, MD (Downtown)	23 miles

Contact Us

For additional leasing information or to schedule a tour, contact:

Bill Jautze

Assistant Vice President, Leasing
 bjautze@sjpi.com | 410.369.1213

Corporate Headquarters:

2560 Lord Baltimore Drive | Baltimore, MD 21244

410.788.0100 | SJPI.COM



Scan now to take a virtual tour, download floor plans and more!

About St. John Properties

St. John Properties, Inc. is one of the nation's largest and most successful privately held commercial real estate firms. Founded in 1971, the vertically-integrated company develops, owns and manages office, flex/ research and development, warehouse, retail and multifamily space nationwide.

Connect with us @stjohnprop



This information contained in this publication has been obtained from sources believed to be reliable. St. John Properties makes no guarantee, warranty or representation about this information. Any projections, opinions, assumptions or estimates used here are for example only and do not represent the current or future performance of the property. Interested parties should conduct an independent investigation to determine whether the property suits their needs. REV 04/25