

Maple Lawn

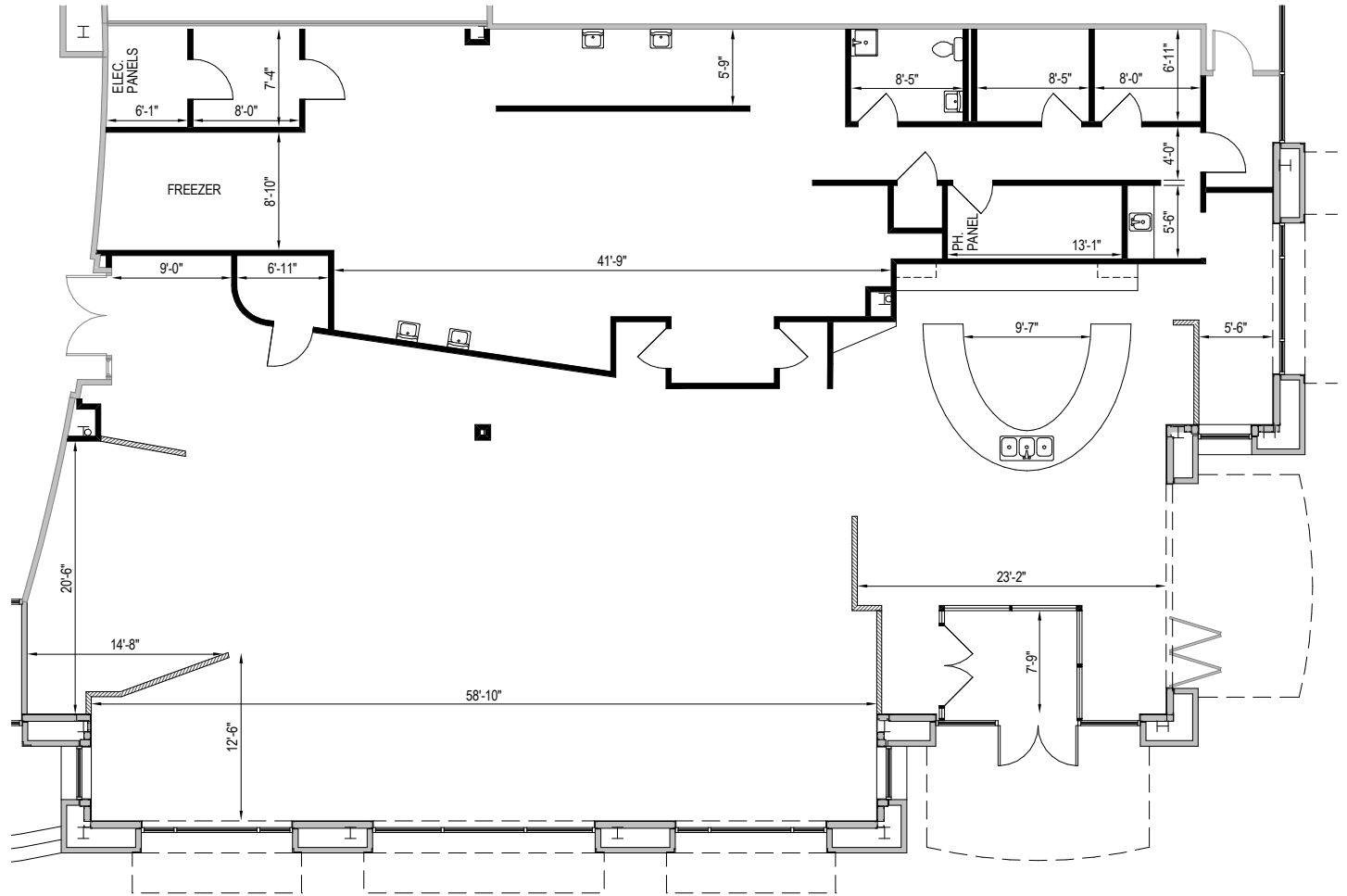
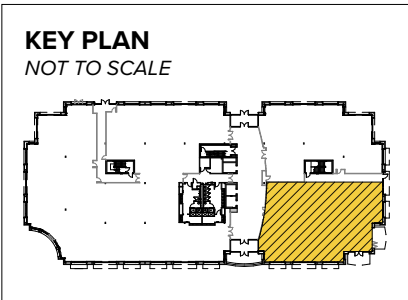
8171 Maple Lawn Boulevard | Fulton, MD 20759
Suite 170

**CLICK TO VIEW
VIRTUAL TOUR**



Total SF Available:
5,596 SF

Second generation restaurant space; fully-equipped, elevated dining opportunity in walkable Howard County mixed-use community, features high-end furniture, fixtures, and equipment, plus large circular bar



Note: This space plan is subject to existing field conditions. This drawing is proprietary and the exclusive property of St. John Properties, Inc. Any duplications, distribution, or other unauthorized use is strictly prohibited.





8171 Maple Lawn Boulevard

Three-Story Class 'A' Office • 90,756 Sq. Ft.

NEWLY RENOVATED LOBBY



Building Specifications	
Suite Sizes	2,500 up to 90,756 SF
Parking	4 spaces per 1,000 SF
Elevator	Yes
HVAC	Gas, VAV with zone control
Lease Type	Full Service





Scan code to take a virtual tour, download floor plans and more!

About St. John Properties

St. John Properties, Inc. is one of the nation's largest and most successful privately held commercial real estate firms. Founded in 1971, the vertically-integrated company develops, owns and manages office, flex/ research and development, warehouse, retail and multifamily space nationwide.

Connect with us @stjohnprop



Contact Us

OFFICE & FLEX/R&D LEASING:

Bill Jautze
Assistant Vice President, Leasing
BJautze@sjpi.com | 410.369.1213

Matt Lenihan
Executive Vice President, Leasing
MLenihan@sjpi.com | 410.369.1202

RETAIL LEASING:

Bill Holzman
Senior Vice President, Retail Leasing
BHolzman@sjpi.com | 410.369.1240

Corporate Headquarters:
2560 Lord Baltimore Drive | Baltimore, MD 21244
410.788.0100 | SJPI.COM

Master Developer: **GREENEBAUM ENTERPRISES**



This information contained in this publication has been obtained from sources believed to be reliable. St. John Properties makes no guarantee, warranty or representation about this information. Any projections, opinions, assumptions or estimates used here are for example only and do not represent the current or future performance of the property. Interested parties should conduct an independent investigation to determine whether the property suits their needs. REV 12/25