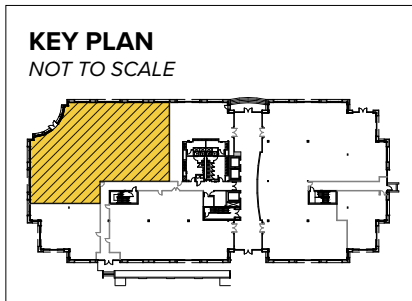


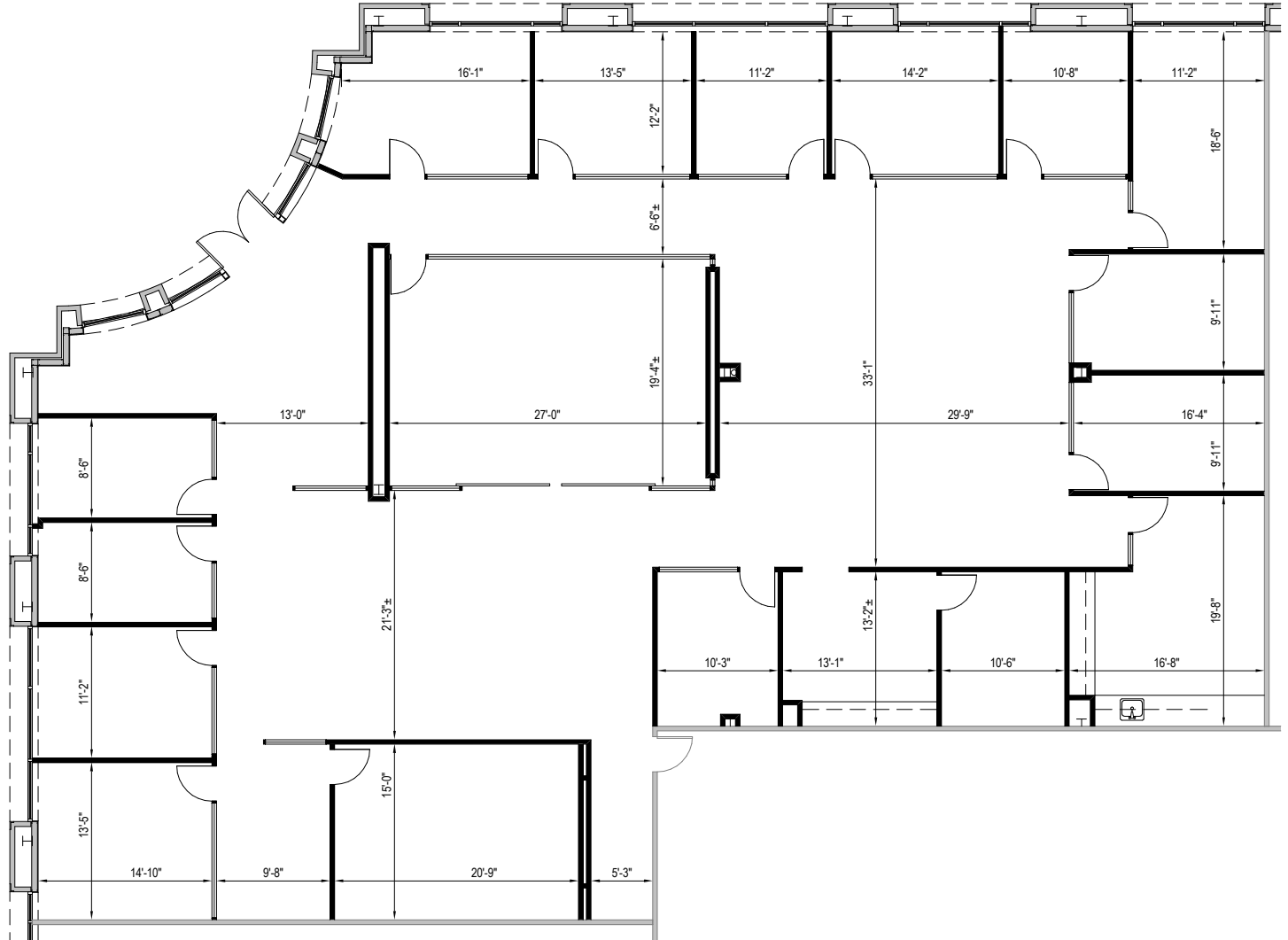


Total SF Available:
7,445 SF

Incredible first floor office space with direct entry and exterior signage opportunity



Note: This space plan is subject to existing field conditions. This drawing is proprietary and the exclusive property of St. John Properties, Inc. Any duplications, distribution, or other unauthorized use is strictly prohibited.



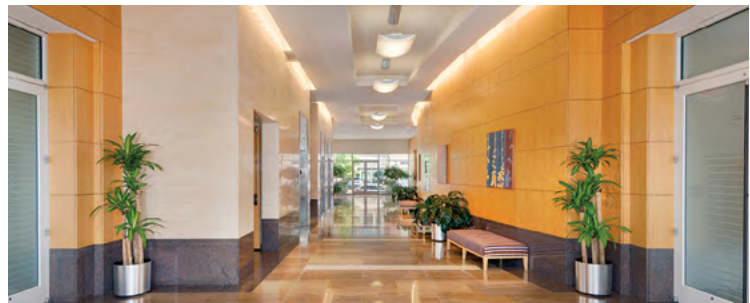


8170 Maple Lawn Boulevard

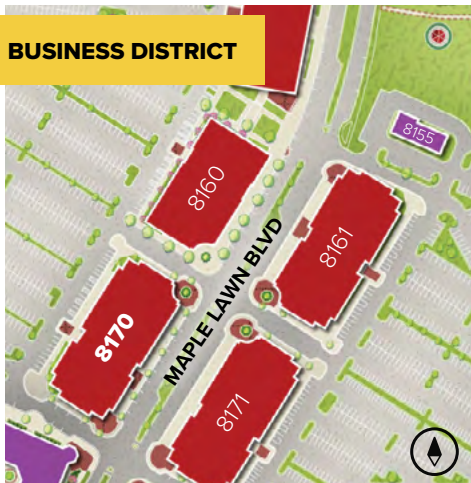
Three-Story Class 'A' Office • 88,063 Sq. Ft.

Building Specifications

Suite Sizes	2,500 up to 88,063 SF
Parking	4 spaces per 1,000 SF
Elevator	Yes
HVAC	Gas, VAV with zone control
Lease Type	Full Service



BUSINESS DISTRICT





Scan code to take a virtual tour, download floor plans and more!

About St. John Properties

St. John Properties, Inc. is one of the nation's largest and most successful privately held commercial real estate firms. Founded in 1971, the vertically-integrated company develops, owns and manages office, flex/ research and development, warehouse, retail and multifamily space nationwide.

Connect with us @stjohnprop



Contact Us

Bill Jautze
Assistant Vice President, Leasing
BJautze@sjpi.com | 410.369.1213

Matt Lenihan
Executive Vice President, Leasing
MLenihan@sjpi.com | 410.369.1202

Corporate Headquarters:
2560 Lord Baltimore Drive
Baltimore, MD 21244
410.788.0100 | SJPI.COM



Master Developer: **GREENBAUM ENTERPRISES**



This information contained in this publication has been obtained from sources believed to be reliable. St. John Properties makes no guarantee, warranty or representation about this information. Any projections, opinions, assumptions or estimates used here are for example only and do not represent the current or future performance of the property. Interested parties should conduct an independent investigation to determine whether the property suits their needs. REV 12/25