



# Waukesha Airport Business Center

1900-2000 Pewaukee Road  
Waukesha, WI 53188

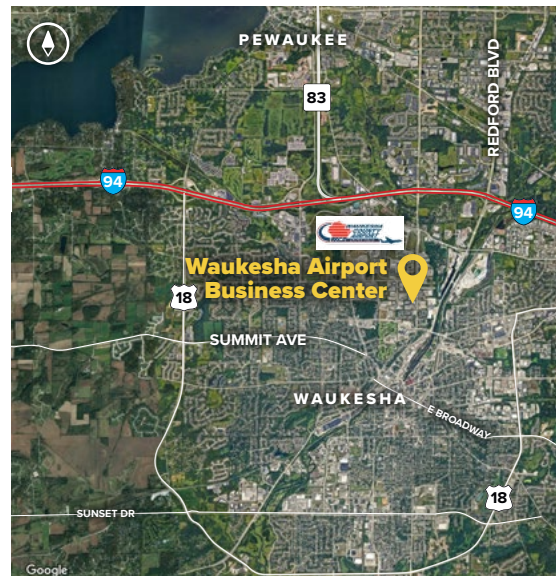


**Direct-Entry Suites | No Shared Common Areas**

## About the Property

Waukesha Airport Business Center is located on the I-94 corridor, and is one minute from Waukesha County Airport, Waukesha County offices, and the I-94 & Hwy 164 Interchange. The Waukesha County business community includes 82,800 square feet of flex/R&D space, ideal for office, warehouse, R&D, light manufacturing, or showroom requirements.

For more information on Waukesha Airport Business Center, visit: [sjpi.com/waukesha](http://sjpi.com/waukesha)



### Flex/R&D/Office Buildings

1900 Pewaukee Road	41,400 SF
--------------------	-----------

2000 Pewaukee Road	41,400 SF
--------------------	-----------

### Building Specifications

Suite Sizes	Up to 41,400 SF
-------------	-----------------

Ceiling Height	16 ft. clear minimum
----------------	----------------------

Parking	212 Spaces
---------	------------

Heat	Natural Gas
------	-------------

Roof	EPDM rubber
------	-------------

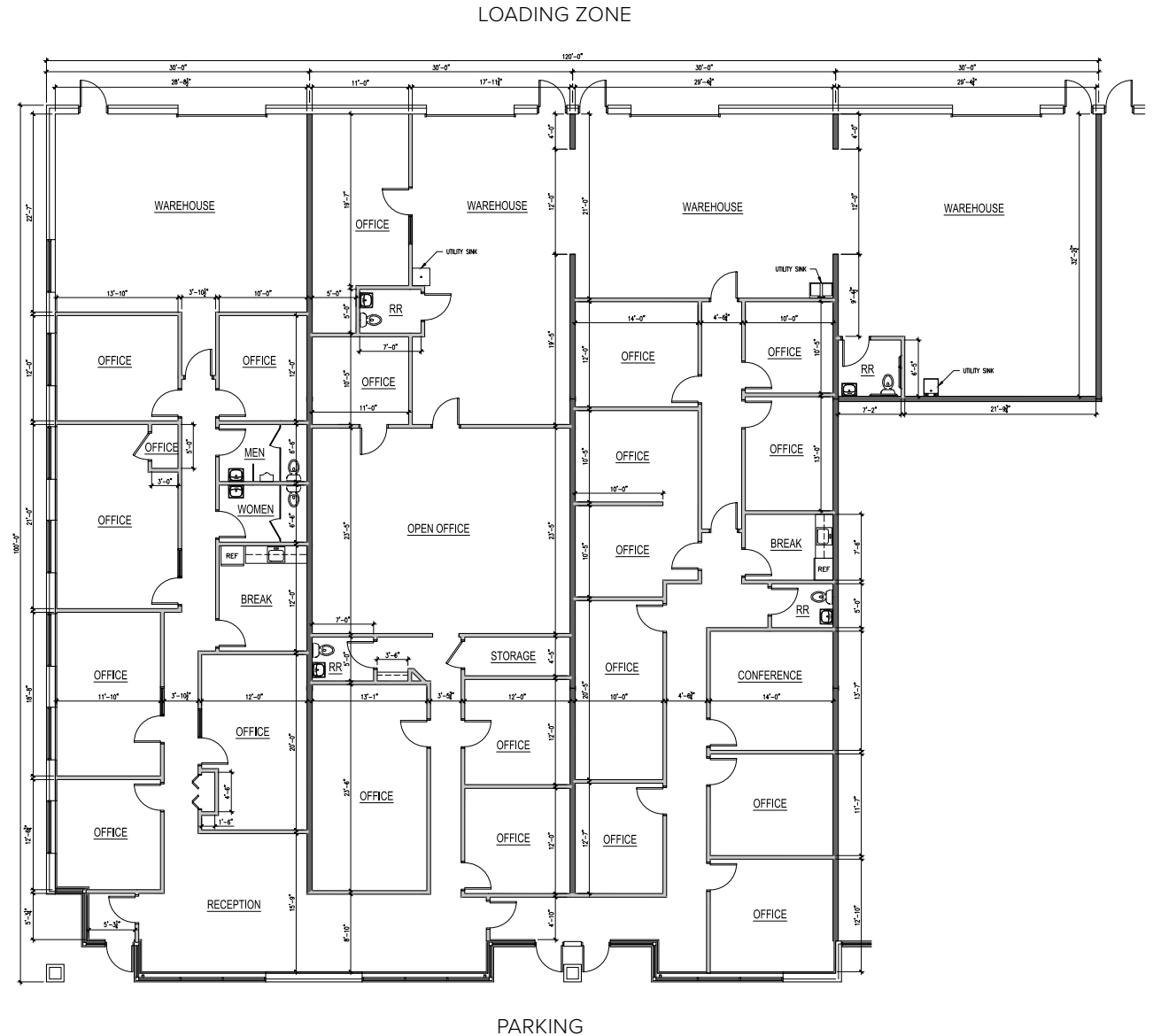
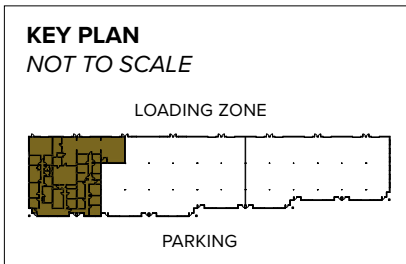
Construction	Brick on Block
--------------	----------------

Zoning	M-3
--------	-----



**Total SF Available:**  
10,005 SF

6,950 sq. ft. office, 3,055 sq. ft. warehouse end unit with drive-in doors (4) and 16' clear height



**Note:** This space plan is subject to existing field conditions. This drawing is proprietary and the exclusive property of St. John Properties, Inc. Any duplications, distribution, or other unauthorized use is strictly prohibited.

# Availabilities

## Office Space at Waukesha Airport Business Center

2,318 sq. ft.	2000 Pewaukee Road	Ste. D	1,078 sq. ft. office, 1,240 sq. ft. warehouse with a dock door and 16' clear height
3,000 sq. ft.	2000 Pewaukee Road	Ste. R	2,237 sq. ft. office, 763 sq. ft. warehouse with private offices (5), conference room (1), break room, and 8' dock door (1)
10,005 sq. ft.	1900 Pewaukee Road	Ste. L(rear)-O	6,950 sq. ft. office, 3,055 sq. ft. warehouse end unit with drive-in doors (4) and 16' clear height

## Contact Us

### Gregory Fax

Regional Partner, Wisconsin

GFax@sjpi.com | 262.524.0100

### Wisconsin Regional Office:

2000 Pewaukee Road | Suite A

Waukesha, WI 53188



262.524.0100 | [SJPI.COM/WISCONSIN](http://SJPI.COM/WISCONSIN)