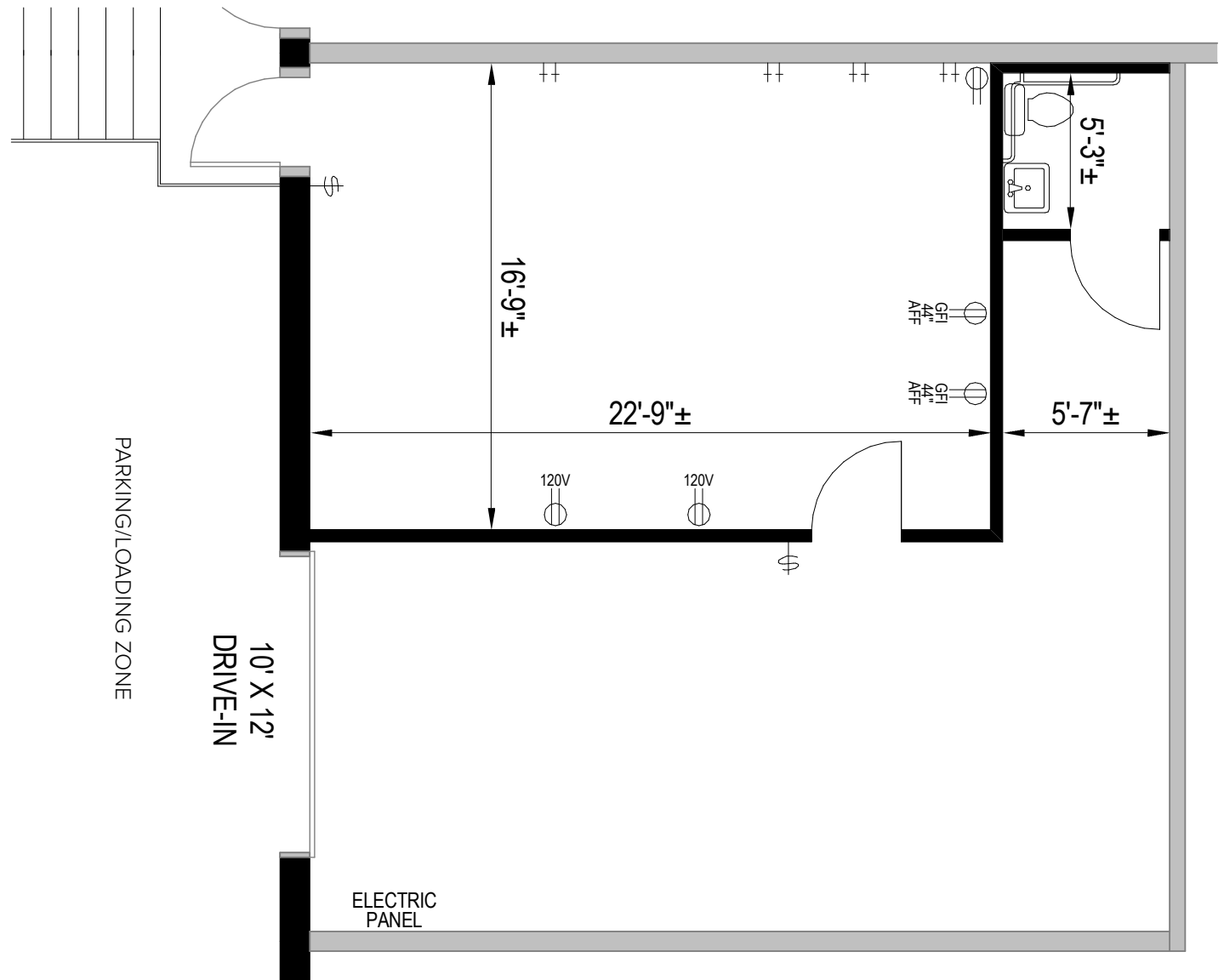
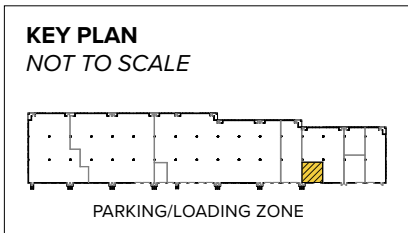




Total SF Available:
900 SF

100% warehouse with
10'x12' drive-in door



Note: This space plan is subject to existing field conditions. This drawing is proprietary and the exclusive property of St. John Properties, Inc. Any duplications, distribution, or other unauthorized use is strictly prohibited.

About Reisterstown Business Center

This 16-acre mixed-use business community is located off MD Route 140 in Reisterstown, Maryland in Baltimore County.

The unified architecture of St. John Properties' three buildings, totaling 132,600 square feet of office space and flex/R&D, provide Reisterstown Business Center a campus-like business environment. Tenant sizes from 1,950 square feet to 59,400 square feet of space offer businesses straight-forward, economical and high-utility space in a covenant-protected, well-maintained atmosphere. Thirty foot wide spaces combined with 16 foot high ceiling heights offer maximum flexibility. Free, generous parking is available adjacent to the building.

Area Demographics in a 3 Mile Radius



Traffic count: 16,149 vehicles/day along Main Street (MD 30) and Chatsworth Avenue



Population in a 3 mile radius: 43,624 people



Average household income in a 3 mile radius: \$129,114 annually

Visit sjpi.com/reisterstownbusiness to learn more

Flex/R&D Buildings

100-166 Business Center Drive 47,400 SF

200-282 Business Center Drive 59,400 SF

300-346 Business Center Drive 25,800 SF

Flex/R&D Specifications

Suite Sizes 1,950 up to 59,400 SF

Ceiling Height 16 ft. clear minimum

Parking 4 spaces per 1,000 SF

Heat Gas

Roof EPDM rubber

Construction Brick on block

Loading Dock or drive-in

Zoning BR

Pad Site

Available Pad Site .61 Acres | Zoned BL





Distances to:

Interstate 795	3 miles
Owings Mills, MD	5 miles
Interstate 695 (Baltimore Beltway)	9 miles
Westminster, MD	12 miles
Towson, MD	15 miles
Baltimore, MD (Downtown)	17 miles
Interstate 95	19 miles
Columbia, MD	21 miles
BWI Airport	25 miles

Contact Us

For additional leasing information or to schedule a tour, contact:

Stephanie Caronna

Leasing Representative

SCaronna@sjpi.com | 410.369.1235

Corporate Headquarters:

2560 Lord Baltimore Drive | Baltimore, MD 21244

410.788.0100 | SJPI.COM



Scan with your mobile device to take a virtual tour, download floor plans and more!

About St. John Properties

St. John Properties, Inc. is one of the nation's largest and most successful privately held commercial real estate firms. The company owns, manages, and has developed office, flex/research and development, warehouse, retail, and multifamily space nationwide.

Connect with us @stjohnprop



This information contained in this publication has been obtained from sources believed to be reliable. St. John Properties makes no guarantee, warranty or representation about this information. Any projections, opinions, assumptions or estimates used here are for example only and do not represent the current or future performance of the property. Interested parties should conduct an independent investigation to determine whether the property suits their needs. REV 03/26