

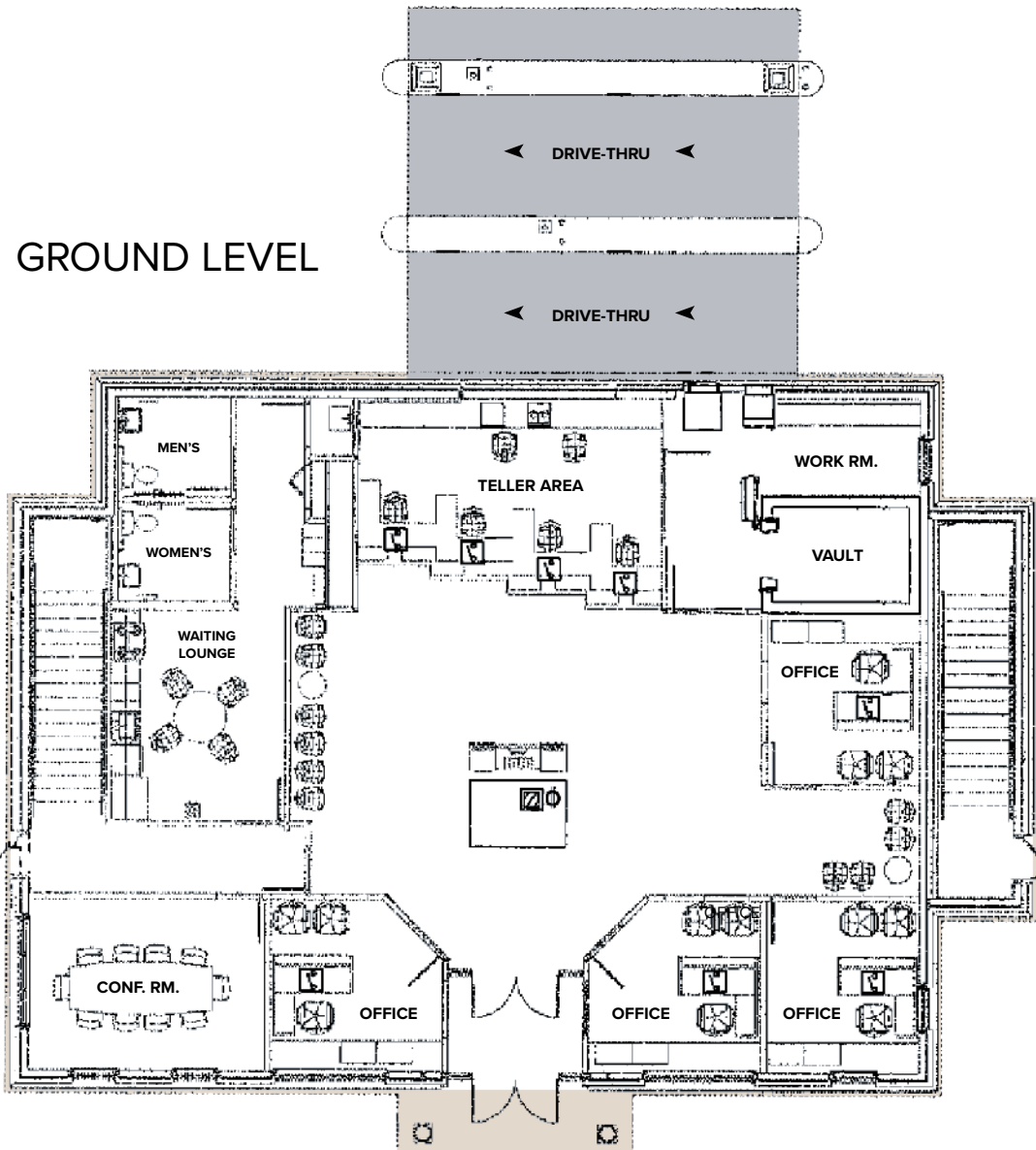
**Yorkridge Center North**  
10620 York Road | Cockeysville, MD 21030  
Ground Level



**Total SF Available:**  
3,353 SF

*Available May 2026.  
Excellent bank pad  
opportunity with high York  
Road visibility and dedicated  
pylon signage. Two-level  
building with two lane drive-  
thru on 0.66± acres*

***Note:** This space plan is subject to existing  
field conditions. This drawing is proprietary  
and the exclusive property of St. John  
Properties, Inc. Any duplications, distribution,  
or other unauthorized use is strictly prohibited.*

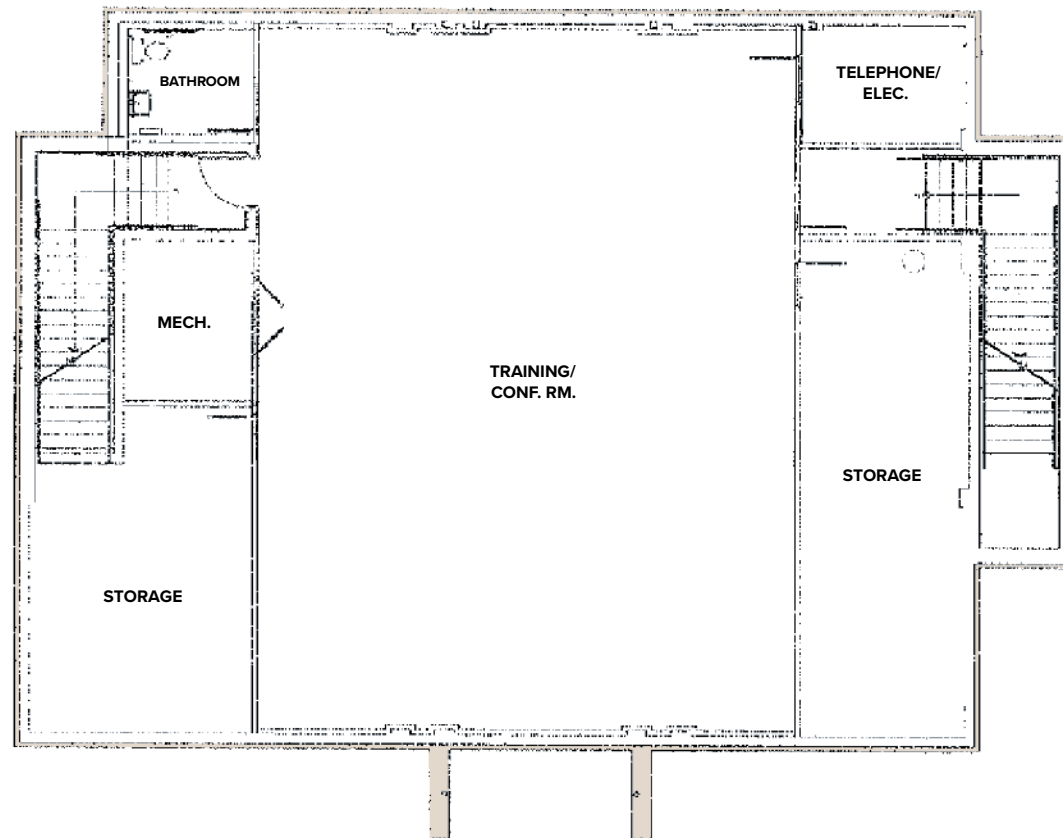




**Total SF Available:**  
3,353 SF

*Available May 2026.  
Excellent bank pad  
opportunity with high York  
Road visibility and dedicated  
pylon signage. Two-level  
building with two lane drive-  
thru on 0.66± acres*

## LOWER LEVEL



**Note:** This space plan is subject to existing field conditions. This drawing is proprietary and the exclusive property of St. John Properties, Inc. Any duplications, distribution, or other unauthorized use is strictly prohibited.



**Two-Level Building with Drive-Thru**

## YORKRIDGE CENTER NORTH

# 10620 York Road

Cockeysville, MD 21030

### Prime location on York Road in Cockeysville with strong demographics & visibility.

- ▶ Excellent visibility along York Road with dedicated electronic pylon signage
- ▶ Easy access from Interstate 83 via Warren Road
- ▶ Located within an 113,000 square foot business community
- ▶ 3,353 SF on 0.66± acres
- ▶ Second generation bank pad with two drive-thru teller lanes

For more information on 10620 York Road, visit:  
[sjpi.com/yorkridgenorth](http://sjpi.com/yorkridgenorth)



**YORKRIDGE CENTER NORTH**





## Location & Demographics

### Distances to:

Interstate 83 .....	2 miles
Interstate 695 .....	4 miles
Timonium, MD .....	4 miles
Towson, MD .....	6 miles
Baltimore, MD (Downtown) .....	14 miles
BWI Airport .....	24 miles
York, PA .....	36 miles

### Traffic Count (MDOT)

York Road at Warren Road: 40,930 vehicles per day

Interstate 83 at Warren Road: 107,305 vehicles per day

### Demographics

	1 Mile	3 Miles	5 Miles
Population	9,099	85,445	181,132
Avg. Household Income	\$150,899	\$144,748	\$149,370

3,300+ Businesses in a 3-mile radius

59,290+ Employees in a 3-mile radius

## Contact Us

**Bill Holzman**, Senior Vice President, Retail Leasing  
BHolzman@sjpi.com | 410.369.1240

**Eric Llewellyn**, Director, Retail Leasing  
ELlewellyn@sjpi.com | 443.464.1308

### Corporate Headquarters:

2560 Lord Baltimore Drive | Baltimore, MD 21244  
**410.788.0100 | SJPI.COM**



### About St. John Properties

One of the nation's largest and most successful privately held commercial real estate firms, St. John Properties owns, manages, and has developed office, flex/research and development, warehouse, retail, and multifamily space nationwide.

**NAIOP**  
COMMERCIAL REAL ESTATE  
DEVELOPMENT ASSOCIATION  
**NATIONAL  
DEVELOPER  
OF THE YEAR**  
— 2018 —



This information contained in this publication has been obtained from sources believed to be reliable. St. John Properties makes no guarantee, warranty or representation about this information. Any projections, opinions, assumptions or estimates used here are for example only and do not represent the current or future performance of the property. Interested parties should conduct an independent investigation to determine whether the property suits their needs. REV 12/25