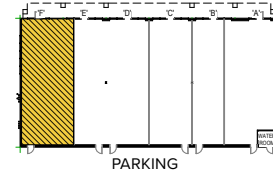




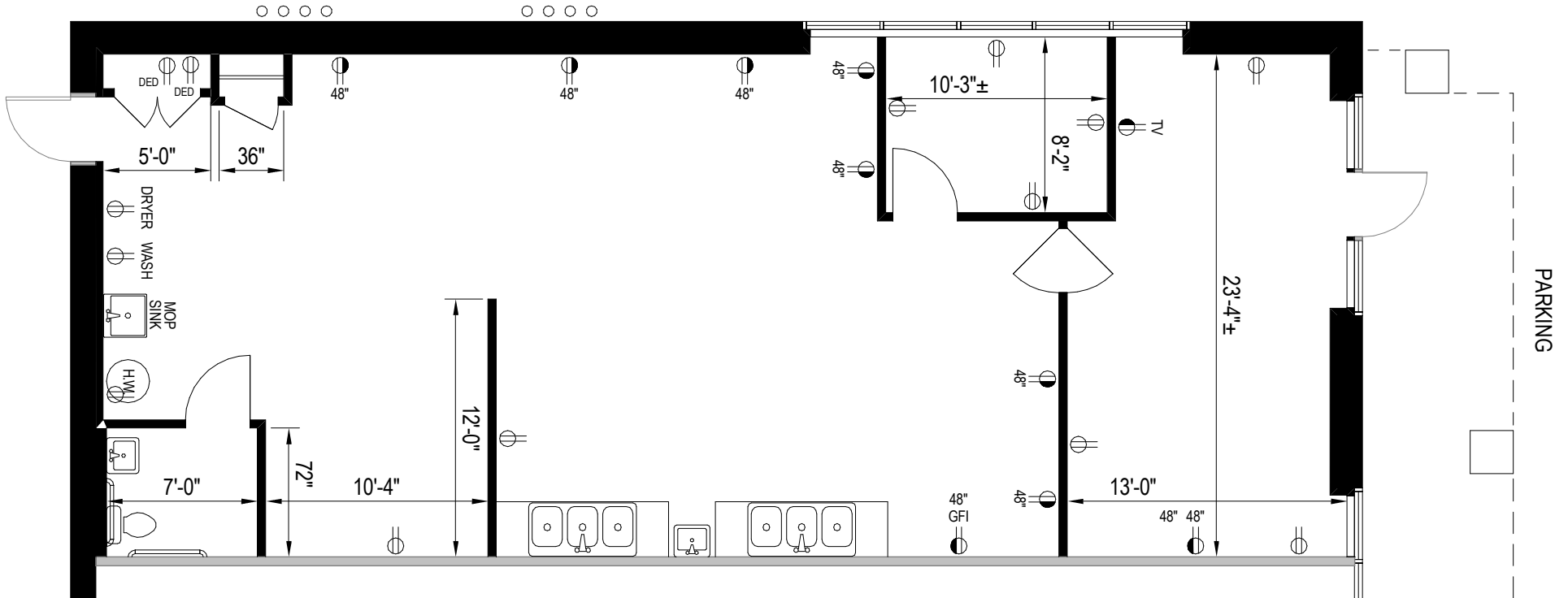
Total SF Available:
1,521 SF

Second generation food use

KEY PLAN
NOT TO SCALE



Note: This space plan is subject to existing field conditions. This drawing is proprietary and the exclusive property of St. John Properties, Inc. Any duplications, distribution, or other unauthorized use is strictly prohibited.





Retail at Quarterfield Center

801 Landmark Drive
Glen Burnie, MD 21061

801 Landmark Drive is a 7,200 square foot retail building within Quarterfield Center. The building is situated at the intersection of Landmark Drive and Quarterfield Road, and is supported by five additional office buildings within the business park.

801 Landmark Drive

Suite A	Subway	1,467 SF
Suite B	Soleil Pharmacy	913 SF
Suite C	VIP Nail Salon	1,220 SF
Suites D-E	Squisito	2,132 SF
Suite F	Edible Arrangements	1,521 SF

Traffic Count (MDOT)

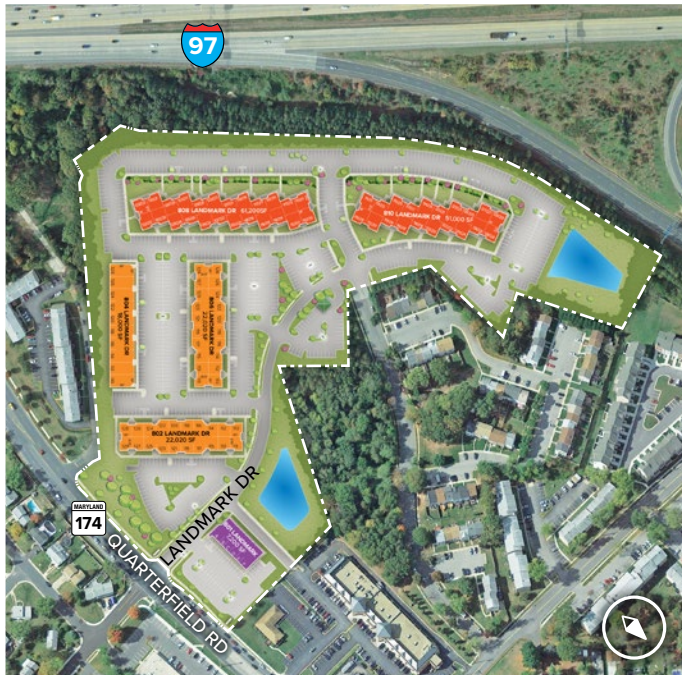
Quarterfield Road at Park W Drive: 22,550 vehicles/day

Demographics

	1 Mile	3 Miles	5 Miles
Population	12,101	88,233	200,167
Avg. Household Income	\$114,181	\$119,328	\$130,529



For more information on Quarterfield Center, visit: sjpi.com/quarterfieldcenter



About St. John Properties

St. John Properties, Inc. is one of the nation's largest and most successful privately held commercial real estate firms. Founded in 1971, the vertically-integrated company develops, owns and manages office, flex/research and development, warehouse, retail and multifamily space nationwide.

Connect with us @stjohnprop



Contact Us

For additional leasing information or to schedule a tour, contact:

Eric Llewellyn

Director,
Retail Leasing

ELlewellyn@sjpi.com
443.464.1308

Bill Holzman

Senior Vice President,
Retail Leasing

BHolzman@sjpi.com
410.369.1240

Corporate Headquarters:

2560 Lord Baltimore Drive | Baltimore, MD 21244

410.788.0100 | SJPI.COM

This information contained in this publication has been obtained from sources believed to be reliable. St. John Properties makes no guarantee, warranty or representation about this information. Any projections, opinions, assumptions or estimates used here are for example only and do not represent the current or future performance of the property. Interested parties should conduct an independent investigation to determine whether the property suits their needs. REV 02/26

