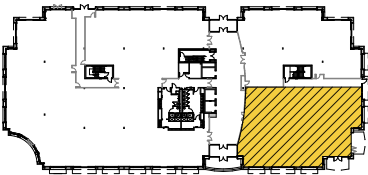




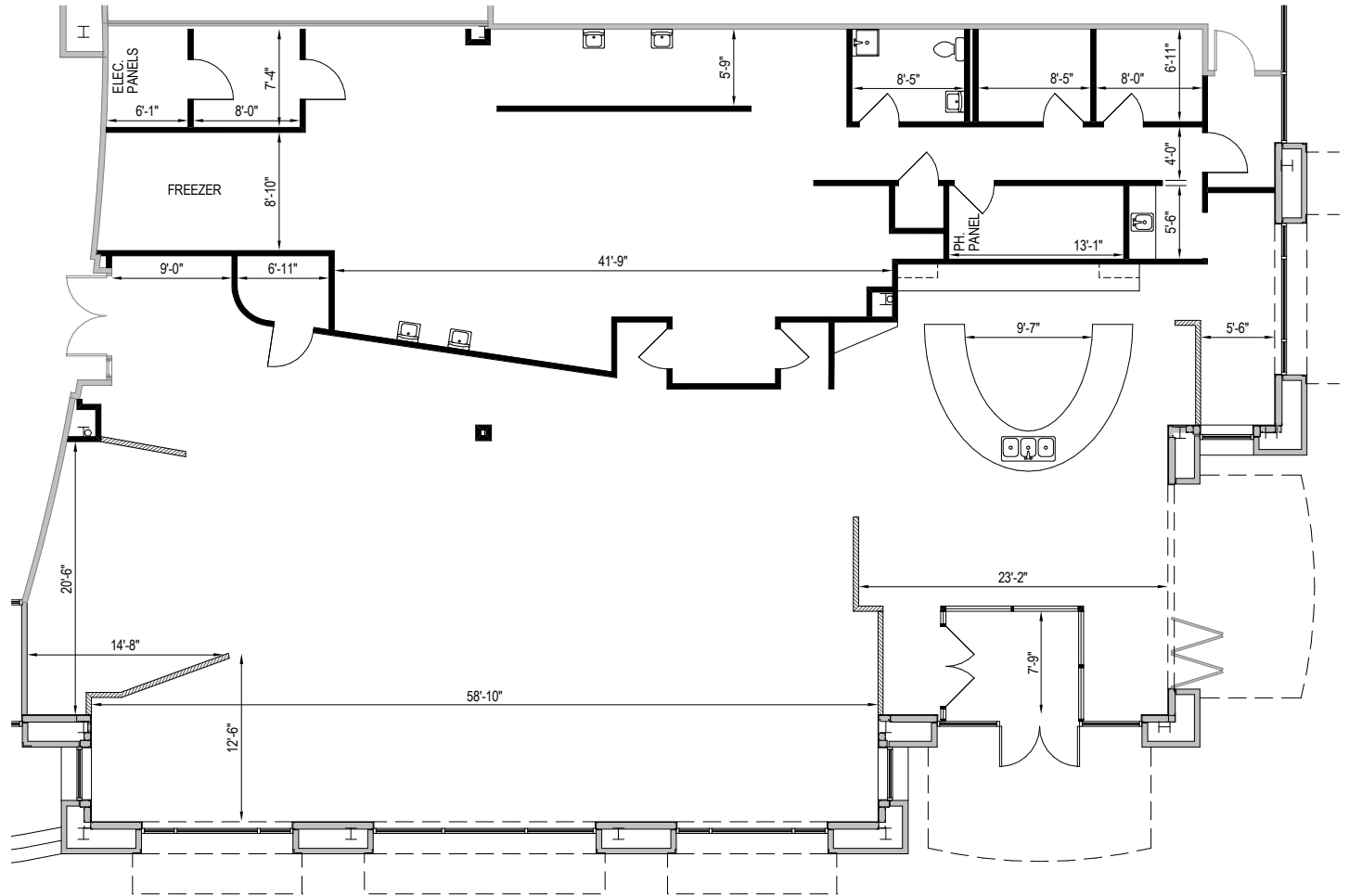
**Total SF Available:**  
5,596 SF

*Second generation  
restaurant space*

**KEY PLAN**  
NOT TO SCALE



**Note:** This space plan is subject to existing field conditions. This drawing is proprietary and the exclusive property of St. John Properties, Inc. Any duplications, distribution, or other unauthorized use is strictly prohibited.





# 8171 Maple Lawn Boulevard

Three-Story Class 'A' Office • 90,756 Sq. Ft.

**NEWLY RENOVATED LOBBY**



Building Specifications	
Suite Sizes	2,500 up to 90,756 SF
Parking	4 spaces per 1,000 SF
Elevator	Yes
HVAC	Gas, VAV with zone control
Lease Type	Full Service







Scan code to  
take a virtual tour,  
download floor plans  
and more!

### About St. John Properties

St. John Properties, Inc. is one of the nation's largest and most successful privately held commercial real estate firms. Founded in 1971, the vertically-integrated company develops, owns and manages office, flex/ research and development, warehouse, retail and multifamily space nationwide.

Connect with us @stjohnprop



## Contact Us

### Bill Jautze

Assistant Vice President, Leasing  
BJautze@sjpi.com | 410.369.1213

### Matt Lenihan

Executive Vice President, Leasing  
MLenihan@sjpi.com | 410.369.1202

### Corporate Headquarters:

2560 Lord Baltimore Drive  
Baltimore, MD 21244  
**410.788.0100 | SJPI.COM**

