

Greenleigh
6201 Greenleigh Avenue | Middle River, MD 21220
Suites 100-115 | First Floor

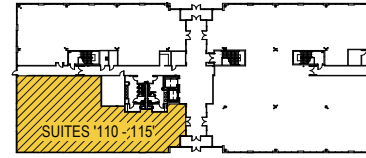


Total SF Available:
5,426 SF

*First floor office with main
lobby entrance*

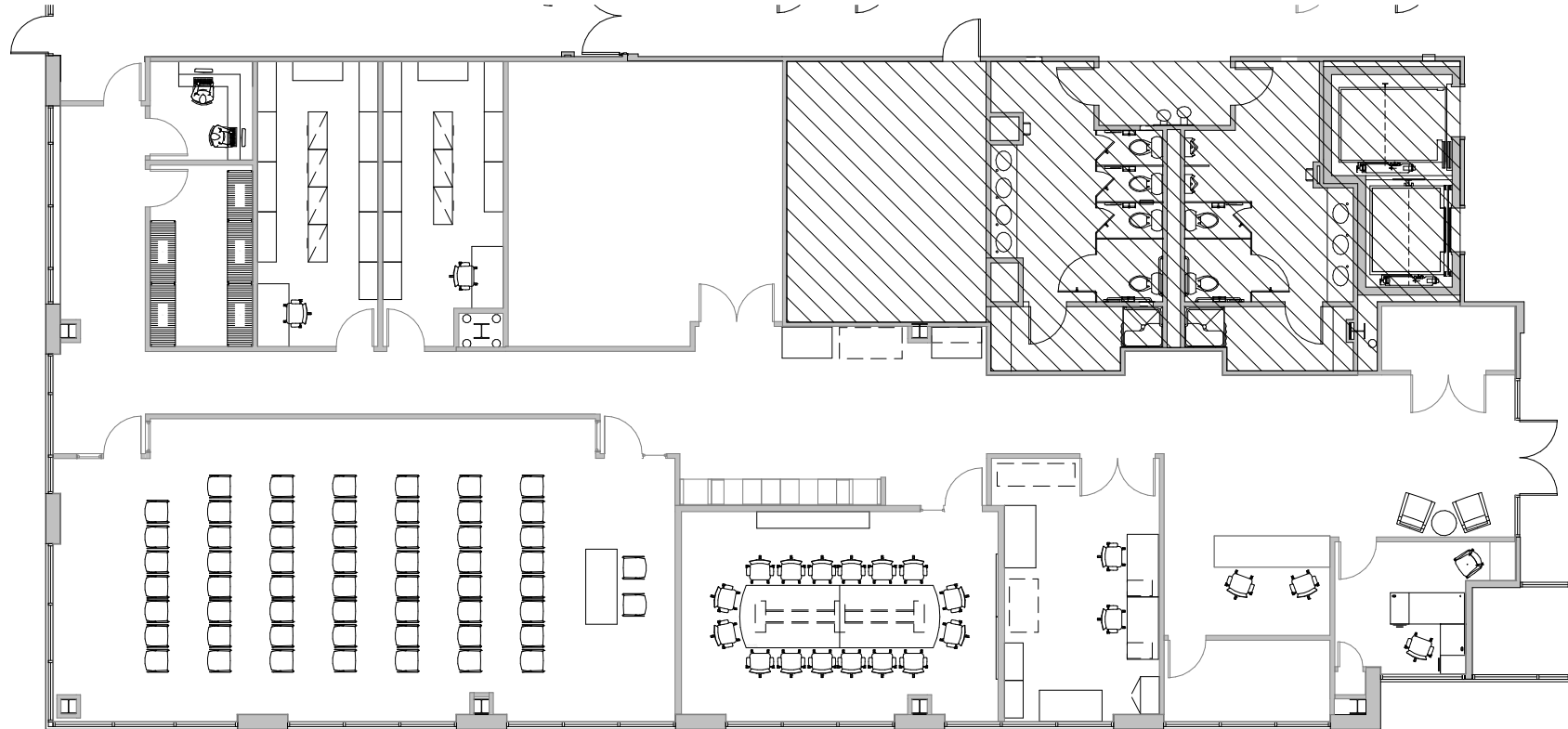
KEY PLAN
NOT TO SCALE

GREENLEIGH AVENUE



PARKING

Note: This space plan is subject to existing field conditions. This drawing is proprietary and the exclusive property of St. John Properties, Inc. Any duplications, distribution, or other unauthorized use is strictly prohibited.





Multi-Story Office

Full-service Class 'A' office

In total, Greenleigh will include two Class 'A' multi-story office buildings totaling more than 176,000 square feet of space. Tenant sizes from 5,000 square feet to 99,540 square feet of space offer businesses headquarters-worthy locations.

Multi-Story Class 'A' Office Space

| Multi-Story Office Buildings | | |
|-----------------------------------|----------------------------|-----------|
| 6201 Greenleigh Avenue | 76,980 SF | LEED GOLD |
| 6211 Greenleigh Avenue | 99,540 SF | LEED GOLD |
| Multi-Story Office Specifications | | |
| LEED | Certified Gold | |
| Suite Sizes | 5,000 up to 99,540 SF | |
| Ceiling Height | 10 ft. clear minimum | |
| Parking | 4 spaces per 1,000 SF | |
| HVAC | Gas, VAV with zone control | |
| Zoning | ML-IM-M43 | |



6211 Greenleigh Avenue, class 'A' office lobby



6201 Greenleigh Avenue



Multi-story class 'A' office build-out



Scan now to take a virtual tour, download floor plans and more!

Contact Us

For additional leasing information or to schedule a tour, contact:

OFFICE/FLEX SPACE:

Bill Jautze

Assistant Vice President, Leasing

BJautze@sjpi.com | 410.369.1213

RETAIL SPACE:

Bill Holzman

Senior Vice President, Retail Leasing

BHolzman@sjpi.com | 410.369.1240

Corporate Headquarters:

2560 Lord Baltimore Drive | Baltimore, MD 21244

410.788.0100 | SJPI.COM

About St. John Properties

St. John Properties, Inc. is one of the nation's largest and most successful privately held commercial real estate firms. Founded in 1971, the vertically-integrated company develops, owns and manages office, flex/ research and development, warehouse, retail and multifamily space nationwide.

Connect with us @stjohnprop



This information contained in this publication has been obtained from sources believed to be reliable. St. John Properties makes no guarantee, warranty or representation about this information. Any projections, opinions, assumptions or estimates used here are for example only and do not represent the current or future performance of the property. Interested parties should conduct an independent investigation to determine whether the property suits their needs. REV 09/25