



Calfield Business Center

16960–17110 W Greenfield Avenue
Brookfield, WI 53005

About the Property

Calfield Business Center is comprised of three office/retail buildings totaling 49,526 square feet of space and is located along the Interstate 94 corridor in Waukesha County. The property is located just minutes from Waukesha County Airport, the Waukesha County offices, and the Interstate 94 and Highway 164 interchange.

For more information on Calfield Business Center, visit: sjpi.com/calfield



Office/Retail Buildings

17110 W Greenfield Avenue	17,211 SF
17040 W Greenfield Avenue	15,104 SF
16960 W Greenfield Avenue	17,211 SF

Building Specifications

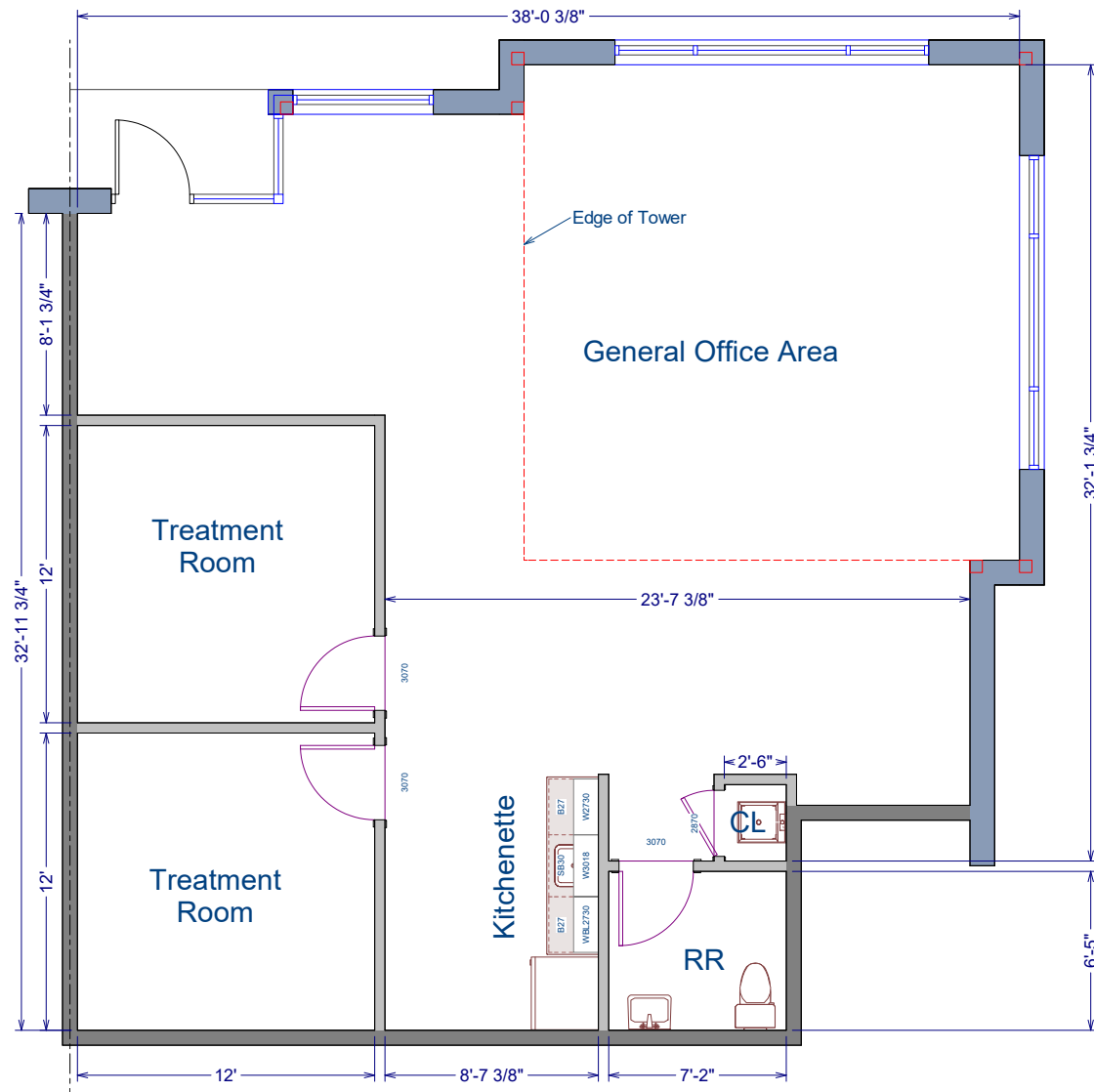
Ceiling Height	12 ft. clear minimum
Parking	5.9 spaces/1,000 SF
Construction	Masonry
Zoning	B-1



Total SF Available:
1,439 SF

End unit with open office area, private offices (2), kitchenette, and private restroom

Note: This space plan is subject to existing field conditions. This drawing is proprietary and the exclusive property of St. John Properties, Inc. Any duplications, distribution, or other unauthorized use is strictly prohibited.



Availabilities

Office/Retail Space at Calfield Business Center

1,439 sq. ft.	17110 W Greenfield Avenue	Suite 7	End unit with open office area, private offices (2), kitchenette, and private restroom
---------------	---------------------------	---------	--

Contact Us

Gregory Fax

Regional Partner, Wisconsin

GFax@sjpi.com | 262.524.0100

Wisconsin Regional Office:

2000 Pewaukee Road | Suite A

Waukesha, WI 53188



262.524.0100 | SJPI.COM/WISCONSIN



This information contained in this publication has been obtained from sources believed to be reliable. St. John Properties makes no guarantee, warranty or representation about this information. Any projections, opinions, assumptions or estimates used here are for example only and do not represent the current or future performance of the property. Interested parties should conduct an independent investigation to determine whether the property suits their needs. REV 11/25