

**Yorkridge Center North**  
10626 York Road | Cockeysville, MD 21030  
Suites A(front)-B(front)

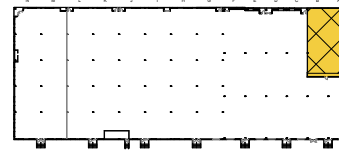


**Total SF Available:**  
**3,700 SF**

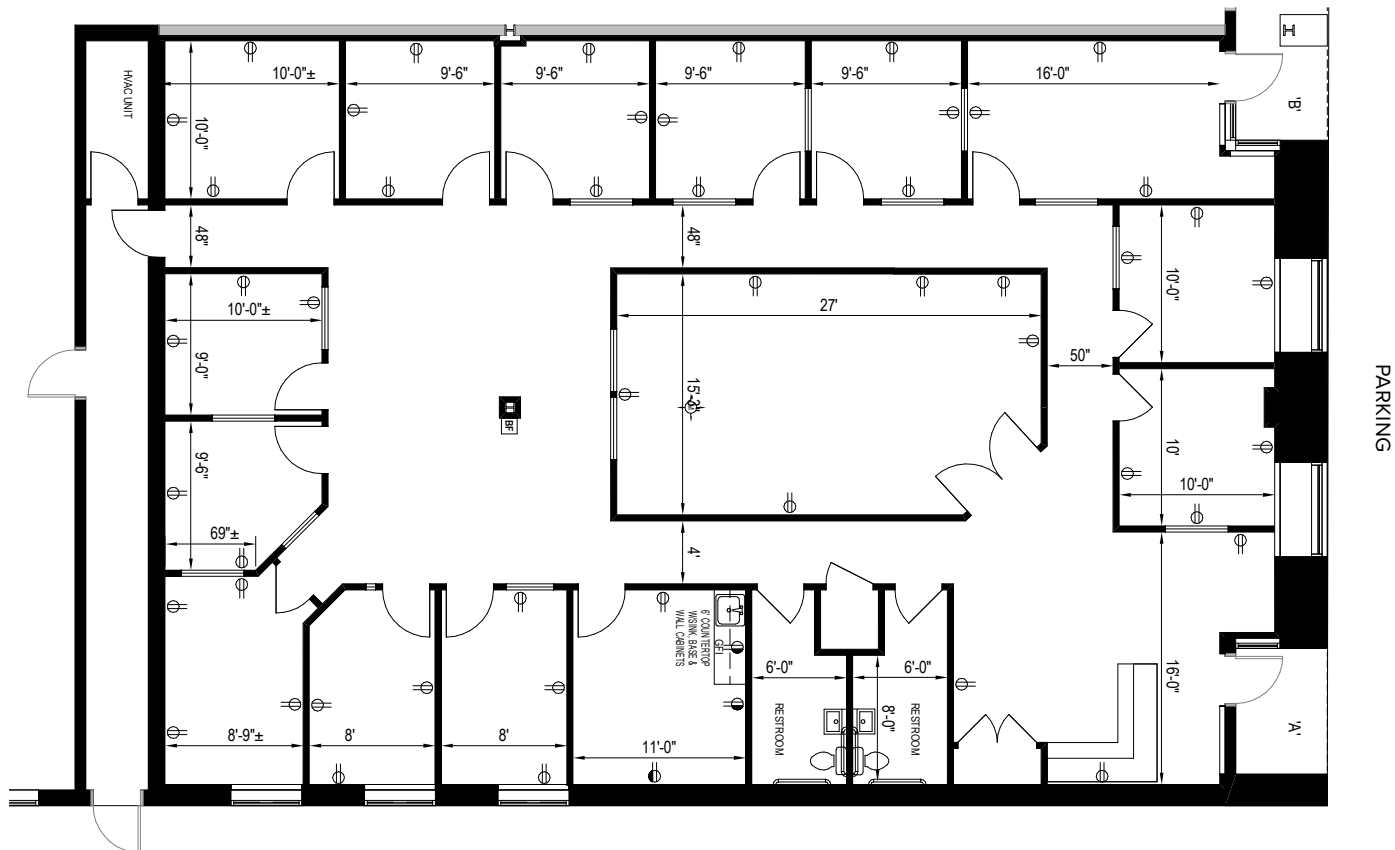
*Heavily built out end unit  
with multiple private offices  
and large conference room*

**KEY PLAN**  
NOT TO SCALE

PARKING



*Note: This space plan is subject to existing field conditions. This drawing is proprietary and the exclusive property of St. John Properties, Inc. Any duplications, distribution, or other unauthorized use is strictly prohibited.*



## About Yorkridge Center North

Yorkridge Center North is a 113,000 square foot mixed use project. Located in the Cockeysville/Hunt Valley area of Baltimore County, Yorkridge Center North is easily accessible from the Warren Road Interchange (Exit 18) off Interstate 83. The property offers affordable leasing rates in spaces suitable for high-tech, research, professional, or retail use.



### Flex/R&D Buildings

10626 York Road	58,903 SF
10540 York Road	28,820 SF

### Flex/R&D Specifications

Suite Sizes	2,520 up to 58,903 SF
Ceiling Height	16 ft. clear minimum
Parking	4 spaces per 1,000 SF
Heat	Gas
Construction	Brick on block
Loading	Dock or drive-in
Zoning	BM-IM & ML-IM

### Two-Story Office Building

10600 York Road	16,265 SF
-----------------	-----------

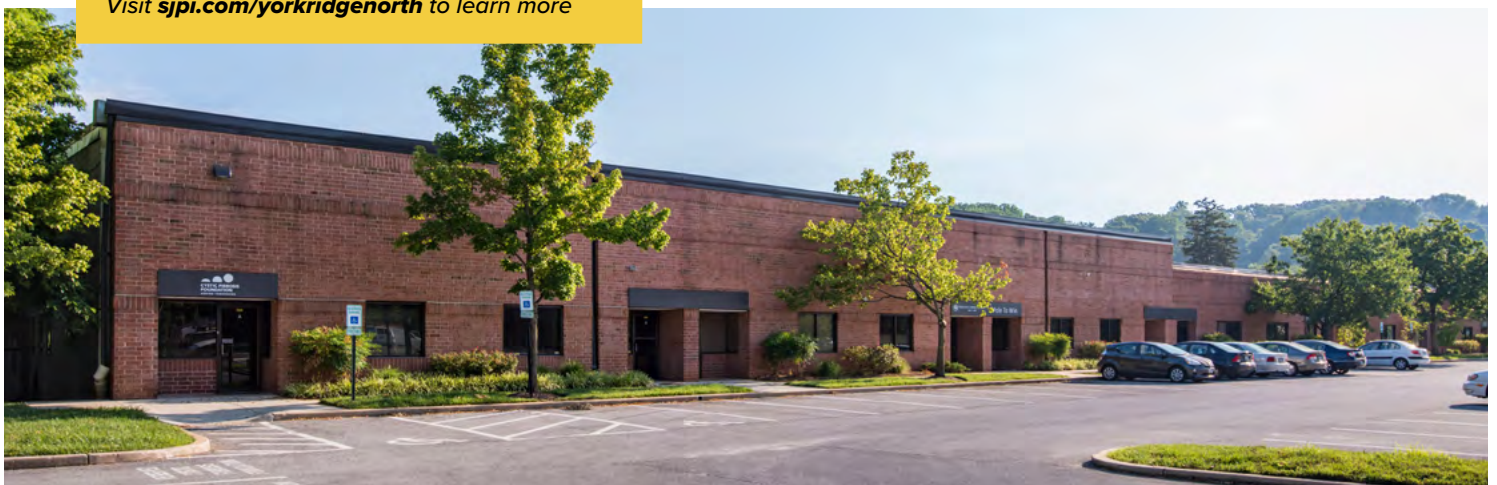
### Two-Story Office Specifications

Suite Sizes	1,180 up to 16,265 SF
Ceiling Height	8 ft. clear minimum
Parking	5 spaces per 1,000 SF
Heat: 1st Floor	Heat pump
Heat: 2nd Floor	Gas
Construction	Brick on block
Zoning	BM-IM & ML-IM

### Inline Retail

10301 York Road	3,353 SF
10540 York Road	9,177 SF

Visit [sjpi.com/yorkridgenorth](http://sjpi.com/yorkridgenorth) to learn more







#### Distances to:

Interstate 83 .....	2 miles
Interstate 695 .....	4 miles
Timonium, MD .....	4 miles
Towson, MD .....	6 miles
Baltimore, MD (Downtown) .....	14 miles
BWI Airport .....	24 miles
York, PA .....	36 miles
Harrisburg, PA .....	60 miles

## Contact Us

For additional leasing information or to schedule a tour, contact:

**Stephanie Caronna**

Leasing Representative

scaronna@sjpi.com | 410.369.1235

#### Corporate Headquarters:

2560 Lord Baltimore Drive | Baltimore, MD 21244

**410.788.0100 | SJPI.COM**



Scan with your mobile device to take a virtual tour, download floor plans and more!

#### About St. John Properties

St. John Properties, Inc. is one of the nation's largest and most successful privately held commercial real estate firms. The company owns, manages, and has developed office, flex/research and development, warehouse, retail, and multifamily space nationwide.

Connect with us @stjohnprop



This information contained in this publication has been obtained from sources believed to be reliable. St. John Properties makes no guarantee, warranty or representation about this information. Any projections, opinions, assumptions or estimates used here are for example only and do not represent the current or future performance of the property. Interested parties should conduct an independent investigation to determine whether the property suits their needs. REV 08/25