

## Valley Grove

2100 W. Pleasant Grove Boulevard | Pleasant Grove, UT 84062

Suite 285 | Second Floor

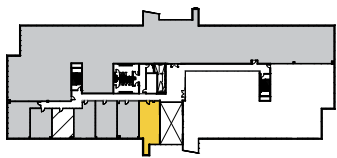


### Total SF Available:

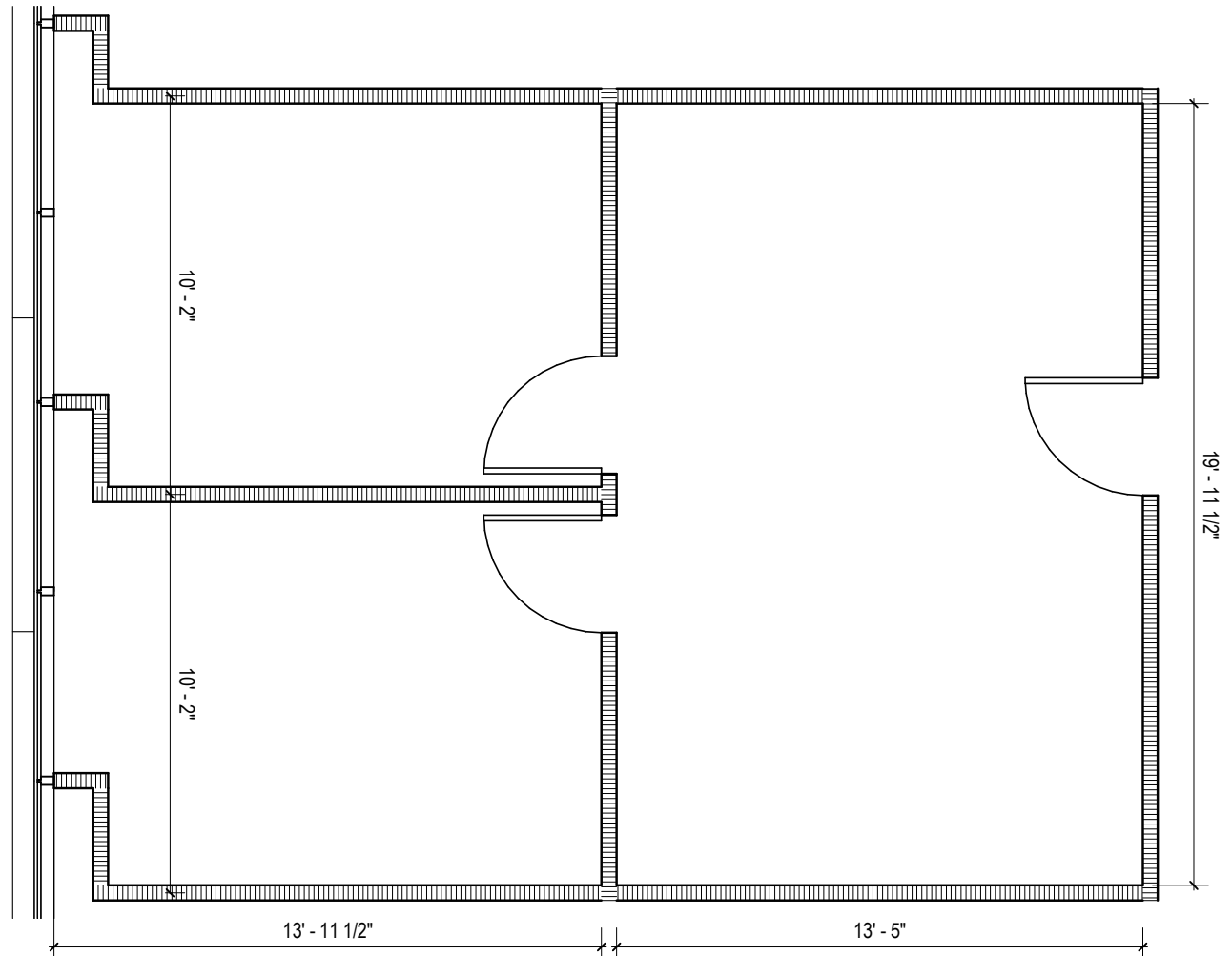
668 SF

*Two enclosed offices and open office space*

### KEY PLAN NOT TO SCALE



**Note:** This space plan is subject to existing field conditions. This drawing is proprietary and the exclusive property of St. John Properties, Inc. Any duplications, distribution, or other unauthorized use is strictly prohibited.





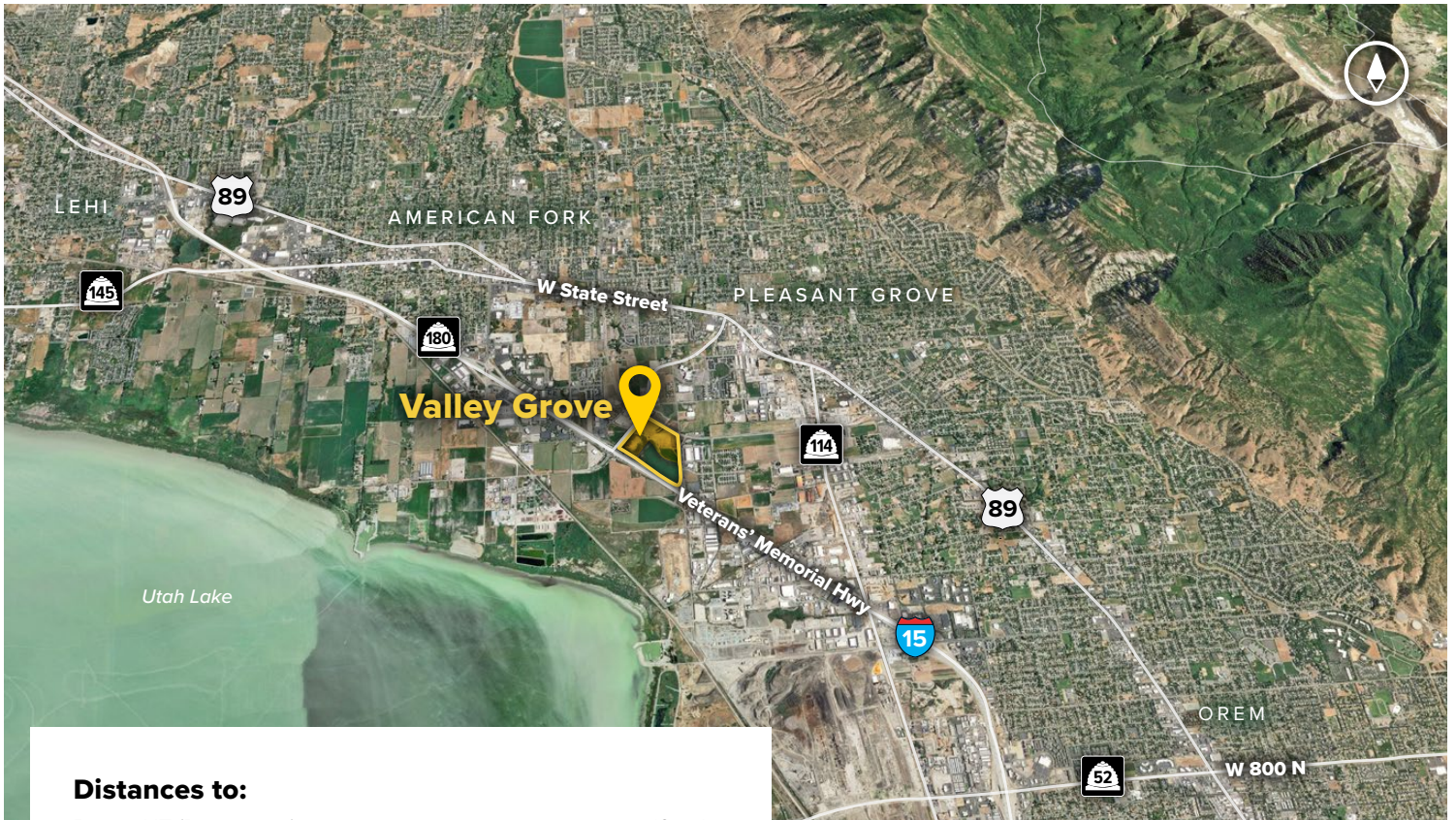
# Grove Tower

Six-Story Class ‘A’ Office

Grove Tower	
2100 W Pleasant Grove Blvd	189,595 SF
Six-Story Office Specifications	
LEED	Certified
Suite Sizes	2,500 up to 189,783 SF
Ceiling Height	10-13 ft. clear minimum
Offices	Built to suit
Parking	5.5 spaces per 1,000 SF







#### Distances to:

Provo, UT (Downtown) .....	12 miles
Interstate 215 .....	25 miles
Salt Lake City, UT (Downtown) .....	34.5 miles
Salt Lake City International Airport .....	38 miles



Scan now to take a virtual tour, download floor plans and more!

## Contact Us

#### Scott Gifford

Assistant Vice President of Leasing  
SGifford@sjpi.com | 801.899.7991

#### Daniel Thomas

Regional Partner  
DThomas@sjpi.com | 801.899.7991

#### Utah Office:

1064 S North County Boulevard | Suite 190  
Pleasant Grove, Utah 84062

801.899.7991 | [SJPI.COM/UTAH](http://SJPI.COM/UTAH)

#### About St. John Properties

St. John Properties, Inc. is one of the nation's largest and most successful privately held commercial real estate firms. Founded in 1971, the vertically-integrated company develops, owns and manages office, flex/ research and development, warehouse, retail and multifamily space nationwide.

Connect with us @stjohnprop



This information contained in this publication has been obtained from sources believed to be reliable. St. John Properties makes no guarantee, warranty or representation about this information. Any projections, opinions, assumptions or estimates used here are for example only and do not represent the current or future performance of the property. Interested parties should conduct an independent investigation to determine whether the property suits their needs. REV 03/25