

North Park
4 North Park Drive | Cockeysville, MD 21030
First Floor | Suites 115 & 121

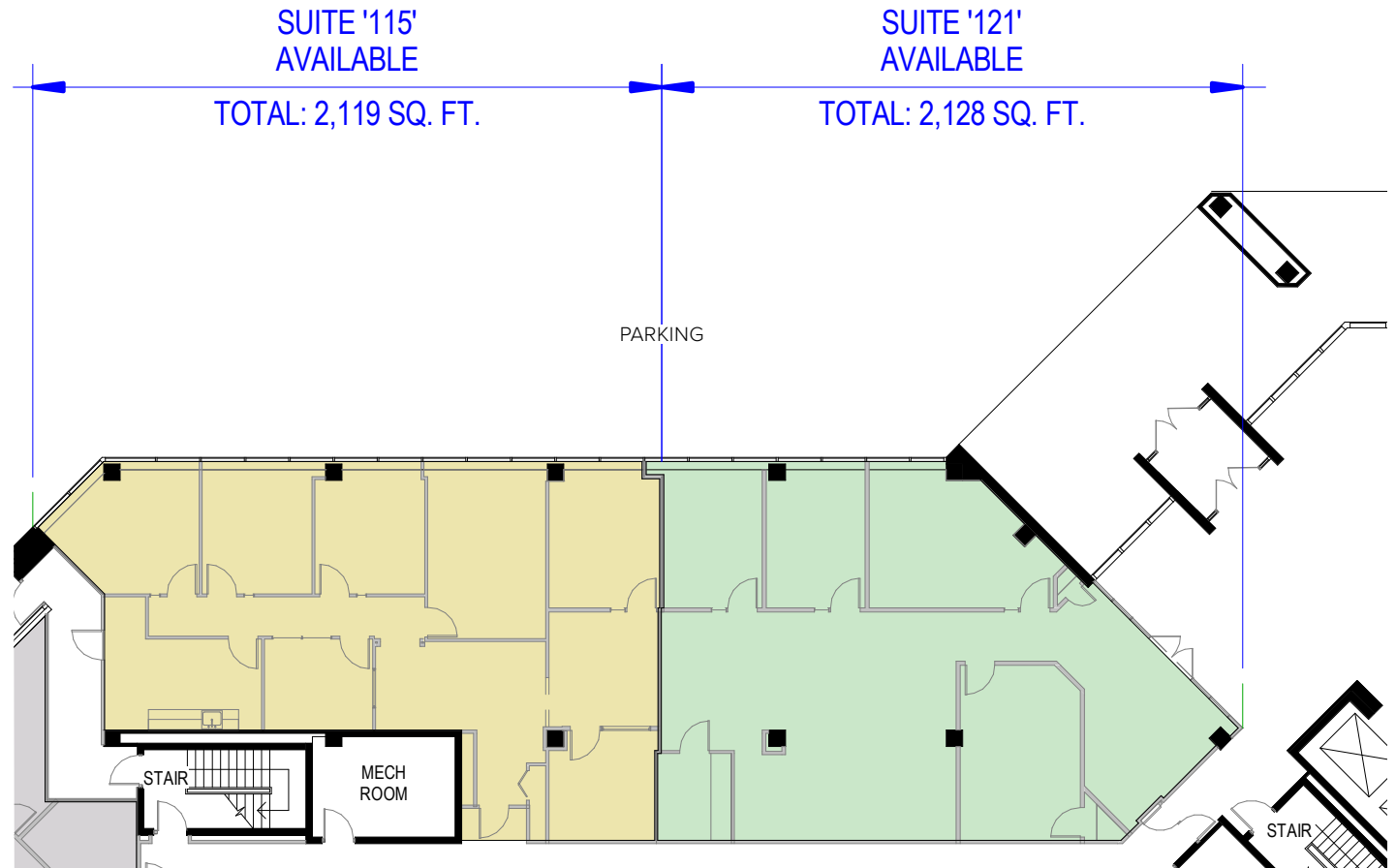
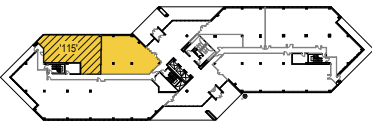


Total SF Available:
2,119–4,247 SF

*Direct off-lobby entry with
great glass line; multiple
private offices and large
conference room*

**CLICK TO VIEW
VIRTUAL TOUR**

KEY PLAN
NOT TO SCALE



Note: This space plan is subject to existing field conditions. This drawing is proprietary and the exclusive property of St. John Properties, Inc. Any duplications, distribution, or other unauthorized use is strictly prohibited.

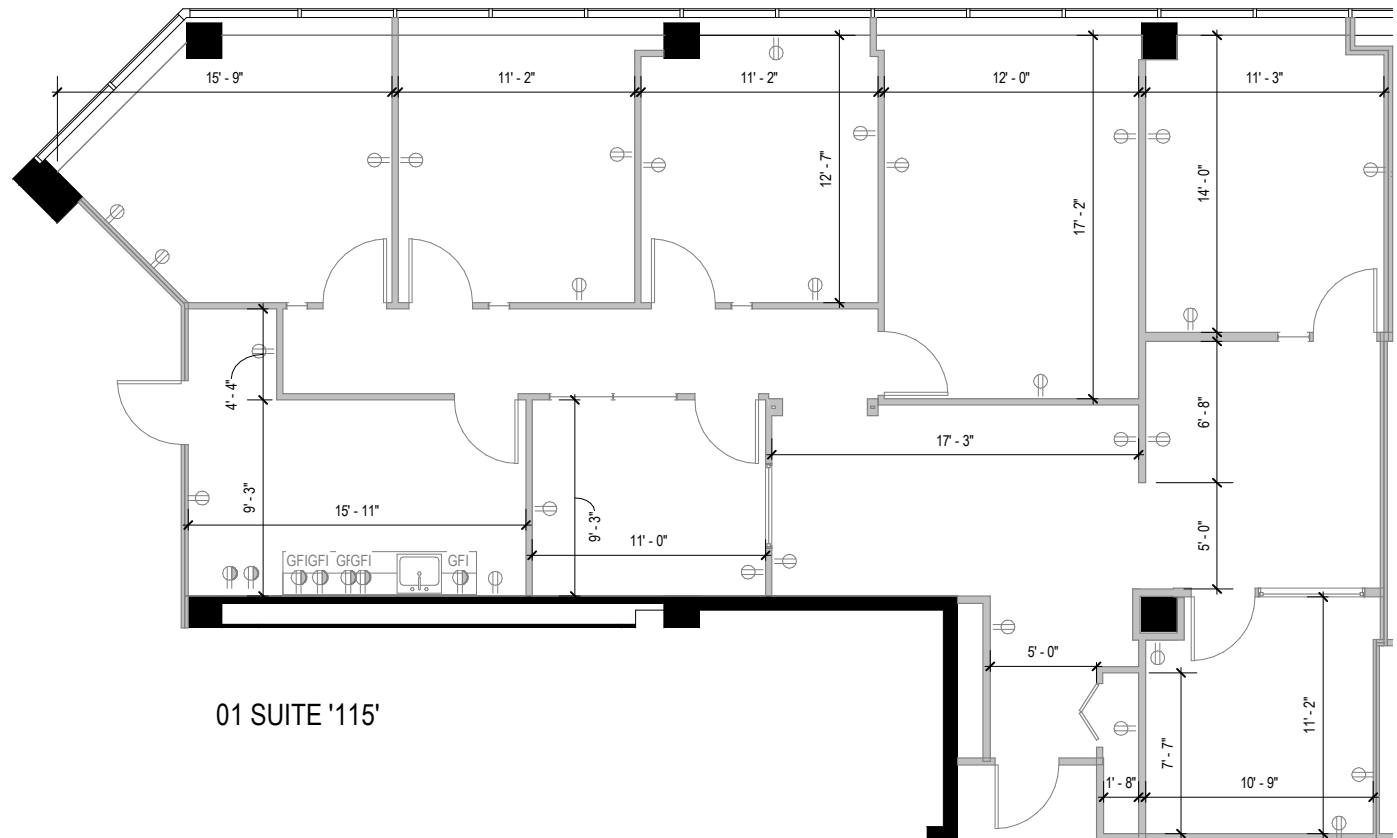
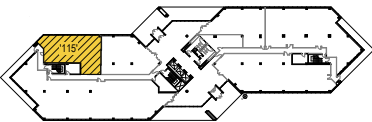
North Park
4 North Park Drive | Cockeysville, MD 21030
First Floor | Suites 115 & 121



Total SF Available:
2,119–4,247 SF

Direct off-lobby entry with great glass line; multiple private offices and large conference room

KEY PLAN
NOT TO SCALE

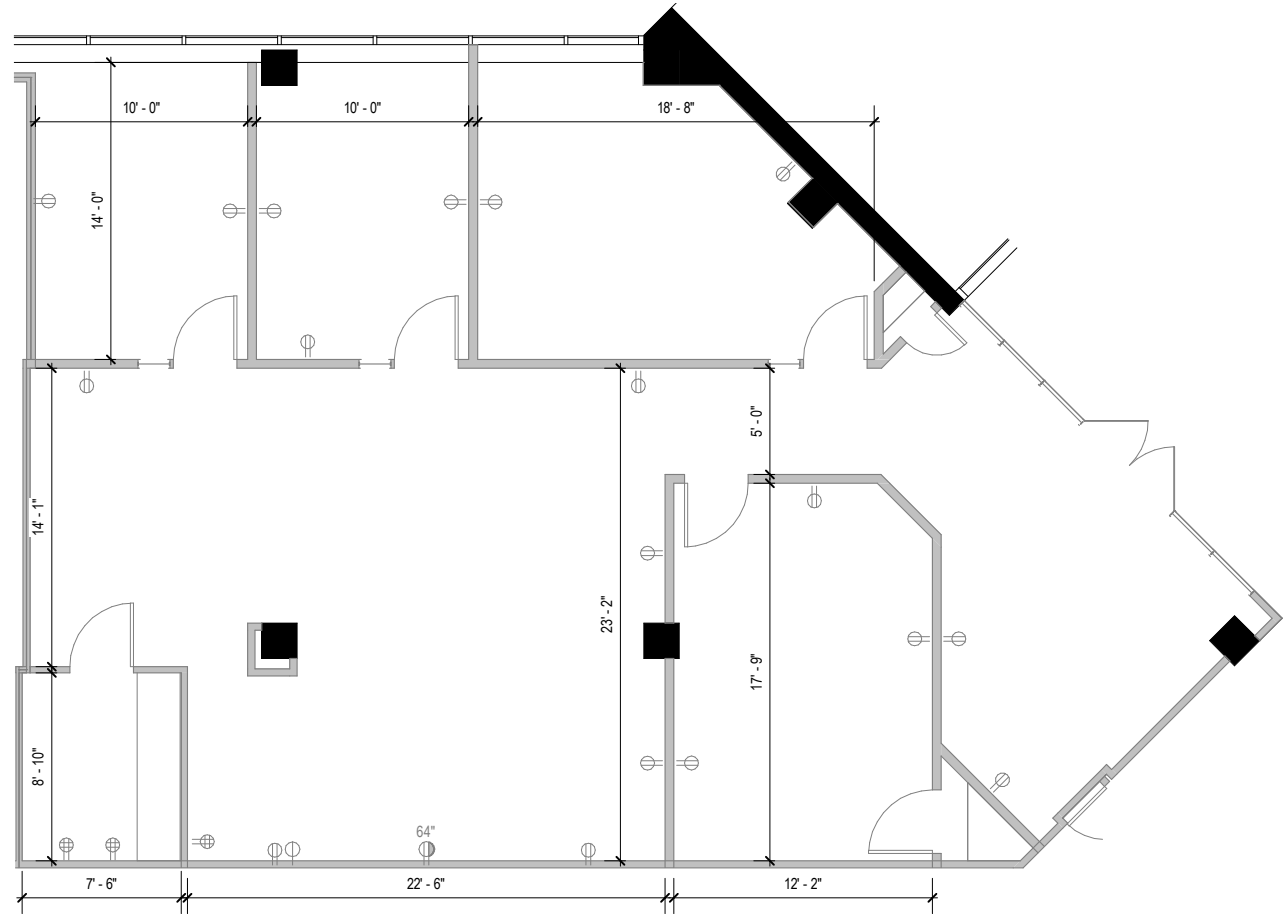
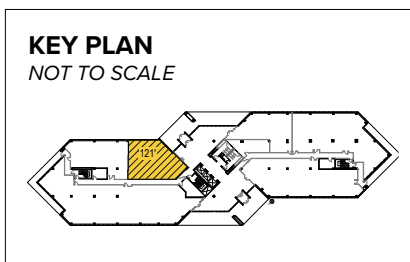


North Park
4 North Park Drive | Cockeysville, MD 21030
First Floor | Suites 115 & 121



Total SF Available:
2,119–4,247 SF

Direct off-lobby entry with great glass line; multiple private offices and large conference room



01 SUITE '121'

About North Park

North Park is a 23-acre business community located within the Hunt Valley sub-market of Northern Baltimore County. The property is comprised of three Class 'A' Office buildings with expansive glass lines and recently upgraded interior common areas.

The business community is surrounded by abundant retail amenities and services at Hunt Valley Towne Centre, along with the headquarters of major employers such as McCormick & Co., BD Diagnostic Systems, TESCO Technologies, and Sinclair Broadcast Group.

Tenants of North Park enjoy exclusive access to a conference room, kitchenette, and on-site gym located within 6 North Park Drive. In addition, tenants have access to expansive green space, nature trails, Western Run, and Oregon Ridge Park.

Multi-Story Class 'A' Office Space

Class 'A' Office Buildings

4 North Park Drive	Five-Story	127,128 SF
6 North Park Drive	Four-Story	81,958 SF
10 North Park Drive	Four-Story	86,306 SF

Class 'A' Office Specifications

Suite Sizes	Up to 127,128 SF
Ceiling Height	8' 7" ft. clear minimum
Offices	Built to suit
Parking	3-4 spaces/1,000 SF
Elevators	Yes
Zoning	MLR, RC6, RC7

Tenant-Exclusive Amenities



Conference Room

Seating for 31 people
with A/V capabilities



Fitness Center

Complimentary,
tenant-exclusive access



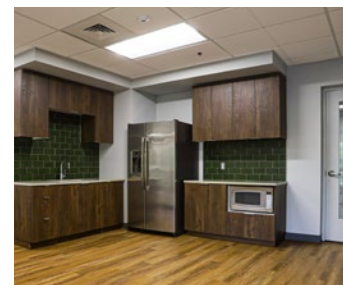
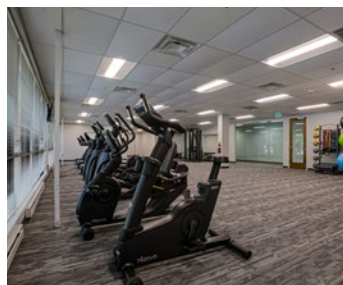
Catering Kitchenette

For hosting colleagues
and guests



Nature Trails

Quick access to Western
Run & Oregon Ridge Park





Distances to:

Interstate 83	2 miles
Timonium, MD	5 miles
Interstate 695 (Baltimore Beltway)	8 miles
Towson, MD	10 miles
Baltimore, MD (Downtown)	19 miles
BWI Airport	30 miles
York, PA	36 miles
Harrisburg, PA	63 miles

Contact Us

Stephanie Caronna

Leasing Representative

SCaronna@sjpi.com | 410.369.1235

Corporate Headquarters:

2560 Lord Baltimore Drive | Baltimore, MD 21244

410.788.0100 | SJPI.COM



Scan now to take a virtual tour, download floor plans and more!

About St. John Properties

St. John Properties, Inc. is one of the nation's largest and most successful privately held commercial real estate firms. Founded in 1971, the vertically-integrated company develops, owns and manages office, flex/ research and development, warehouse, retail and multifamily space nationwide.

Connect with us @stjohnprop



This information contained in this publication has been obtained from sources believed to be reliable. St. John Properties makes no guarantee, warranty or representation about this information. Any projections, opinions, assumptions or estimates used here are for example only and do not represent the current or future performance of the property. Interested parties should conduct an independent investigation to determine whether the property suits their needs. REV 07/25