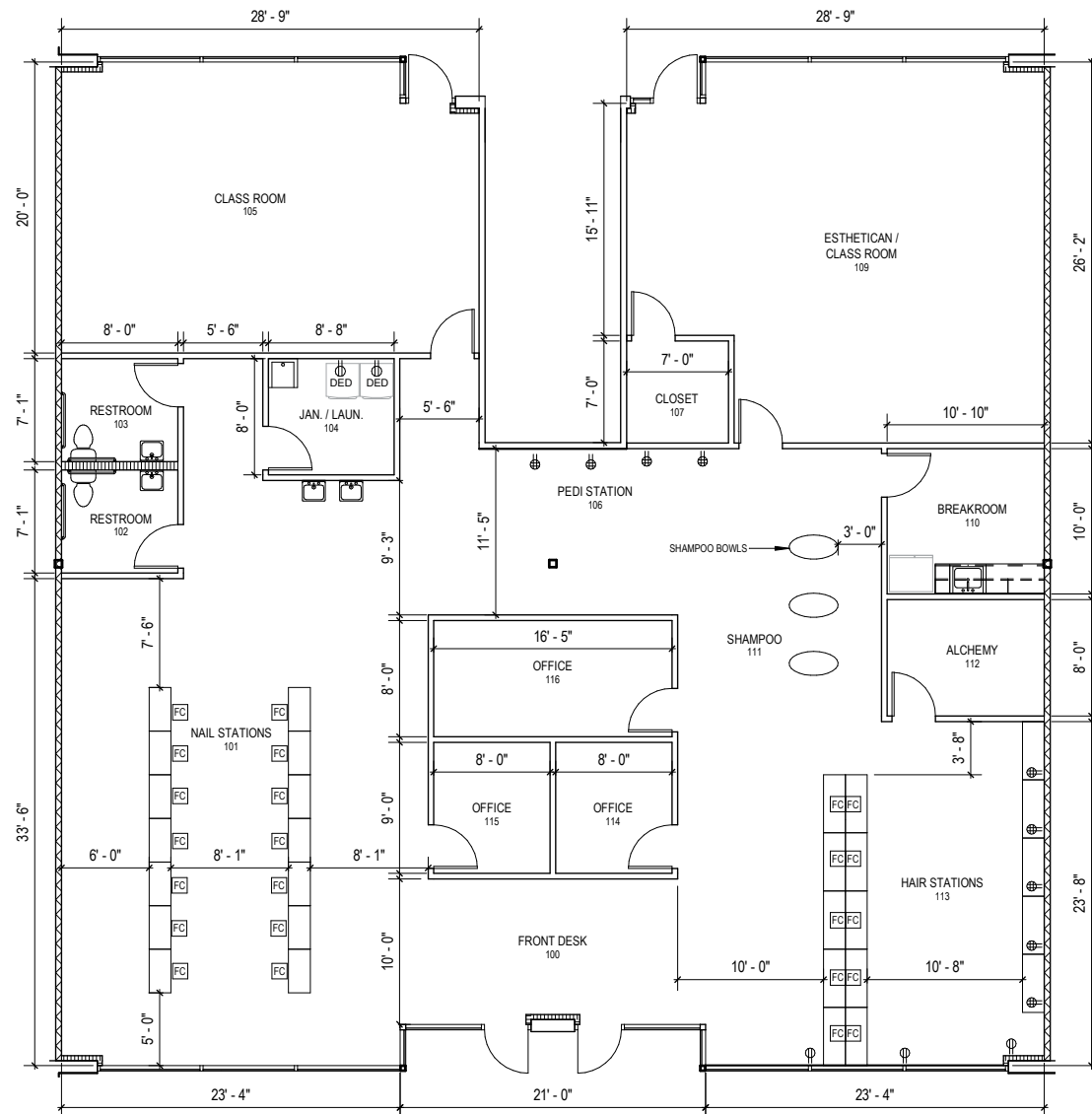




Single-Story Office

Note: This space plan is subject to existing field conditions. This drawing is proprietary and the exclusive property of St. John Properties, Inc. Any duplications, distribution, or other unauthorized use is strictly prohibited.



About Beltway West

Beltway West is a 19-acre business community located at Interstate 215 and 2700 West in Salt Lake County, Utah just minutes from downtown Salt Lake City and Salt Lake International Airport.

The unified architecture of St. John Properties' five buildings, totaling nearly 273,000 square feet of office space, provides Beltway West a campus-like business environment. Tenant sizes are available up to 154,190 square feet of space and offer businesses straight-forward, economical and high-utility space in a covenant-protected, well-maintained atmosphere.

Single-Story Office Buildings

4237–4261 South 2700 West	30,842 SF
---------------------------	-----------

4289–4313 South 2700 West	30,842 SF
---------------------------	-----------

Building I	28,560 SF
------------	-----------

Building III	28,560 SF
--------------	-----------

Single-Story Office Specifications

LEED	Designed
Suite Sizes	Up to 30,842 SF
Ceiling Height	10-14 ft. clear minimum
Offices	Built to suit
Parking	5 per 1,000 SF

Six-Story Office Building

Building V	154,190 SF
------------	------------

Six-Story Office Specifications

LEED	Designed
Suite Sizes	Up to 154,190 SF
Ceiling Height	10-13 ft. clear minimum
Offices	Built to suit
Parking	5 per 1,000 SF

For more information on Beltway West, visit:
sjpi.com/beltwaywestutah

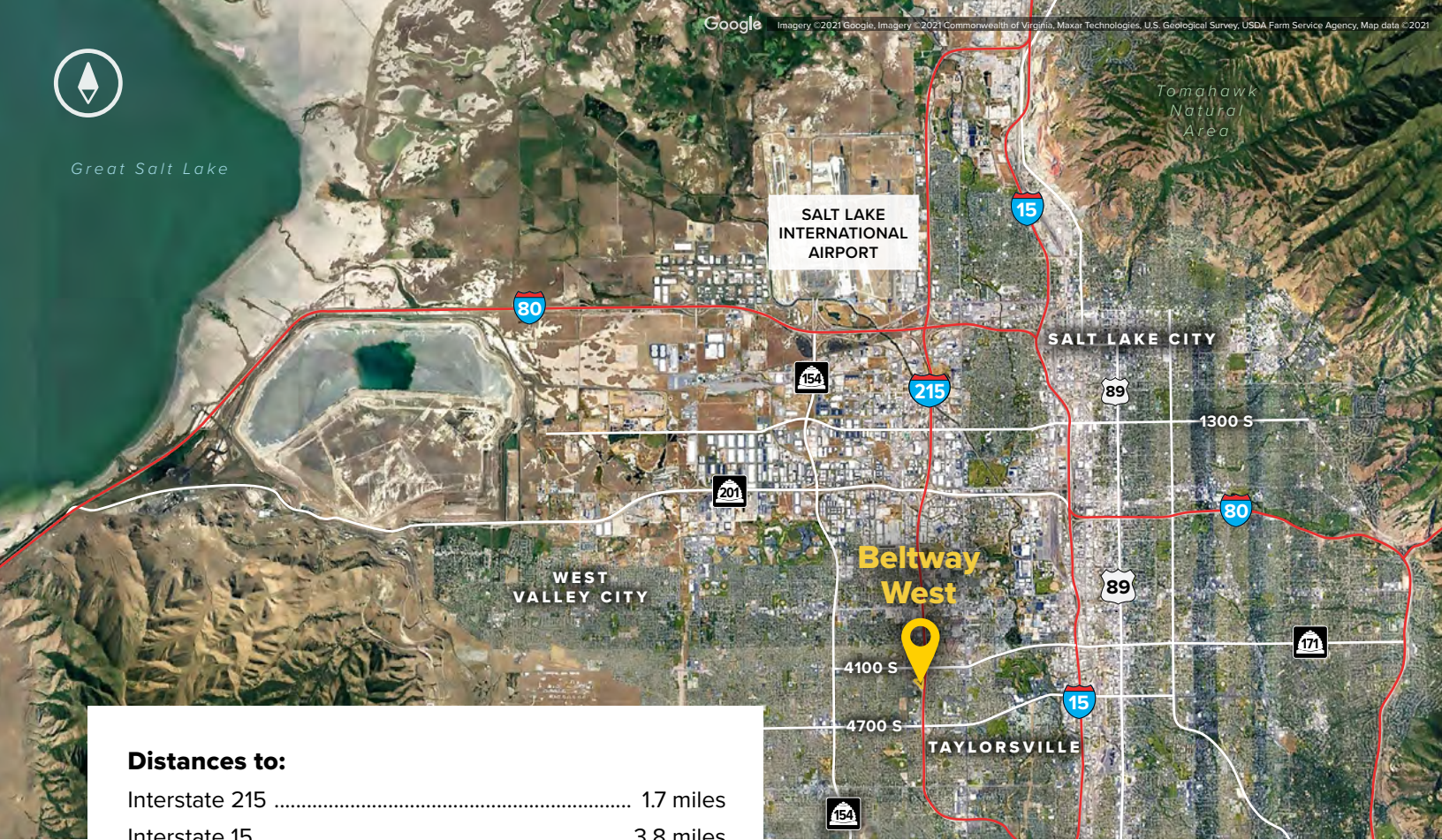




Great Salt Lake

Google

Imagery ©2021 Google, Imagery ©2021 Commonwealth of Virginia, Maxar Technologies, U.S. Geological Survey, USDA Farm Service Agency, Map data ©2021



Distances to:

Interstate 215	1.7 miles
Interstate 15	3.8 miles
Salt Lake City, UT (Downtown)	9 miles
Salt Lake City International Airport	9 miles
Provo, UT (Downtown)	40 miles
Spanish Fork, UT	48 miles



Scan with your mobile device to take a virtual tour, download floor plans and more!

Contact Us

Scott Gifford

Assistant Vice President of Leasing
SGifford@sjpi.com | 801.899.7991

Daniel Thomas

Regional Partner
DThomas@sjpi.com | 801.899.7991

Utah Office:

1064 S North County Boulevard | Suite 190
Pleasant Grove, Utah 84062

801.899.7991 | SJPI.COM/UTAH



NAIOP
COMMERCIAL REAL ESTATE
DEVELOPMENT ASSOCIATION
NATIONAL DEVELOPER
OF THE YEAR
— 2018 —

About St. John Properties

St. John Properties, Inc. is one of the nation's largest and most successful privately held commercial real estate firms. Founded in 1971, the vertically-integrated company develops, owns and manages office, flex/ research and development, warehouse, retail and multifamily space nationwide.

Connect with us @stjohnprop



This information contained in this publication has been obtained from sources believed to be reliable. St. John Properties makes no guarantee, warranty or representation about this information. Any projections, opinions, assumptions or estimates used here are for example only and do not represent the current or future performance of the property. Interested parties should conduct an independent investigation to determine whether the property suits their needs. REV 10/25