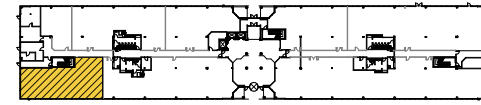




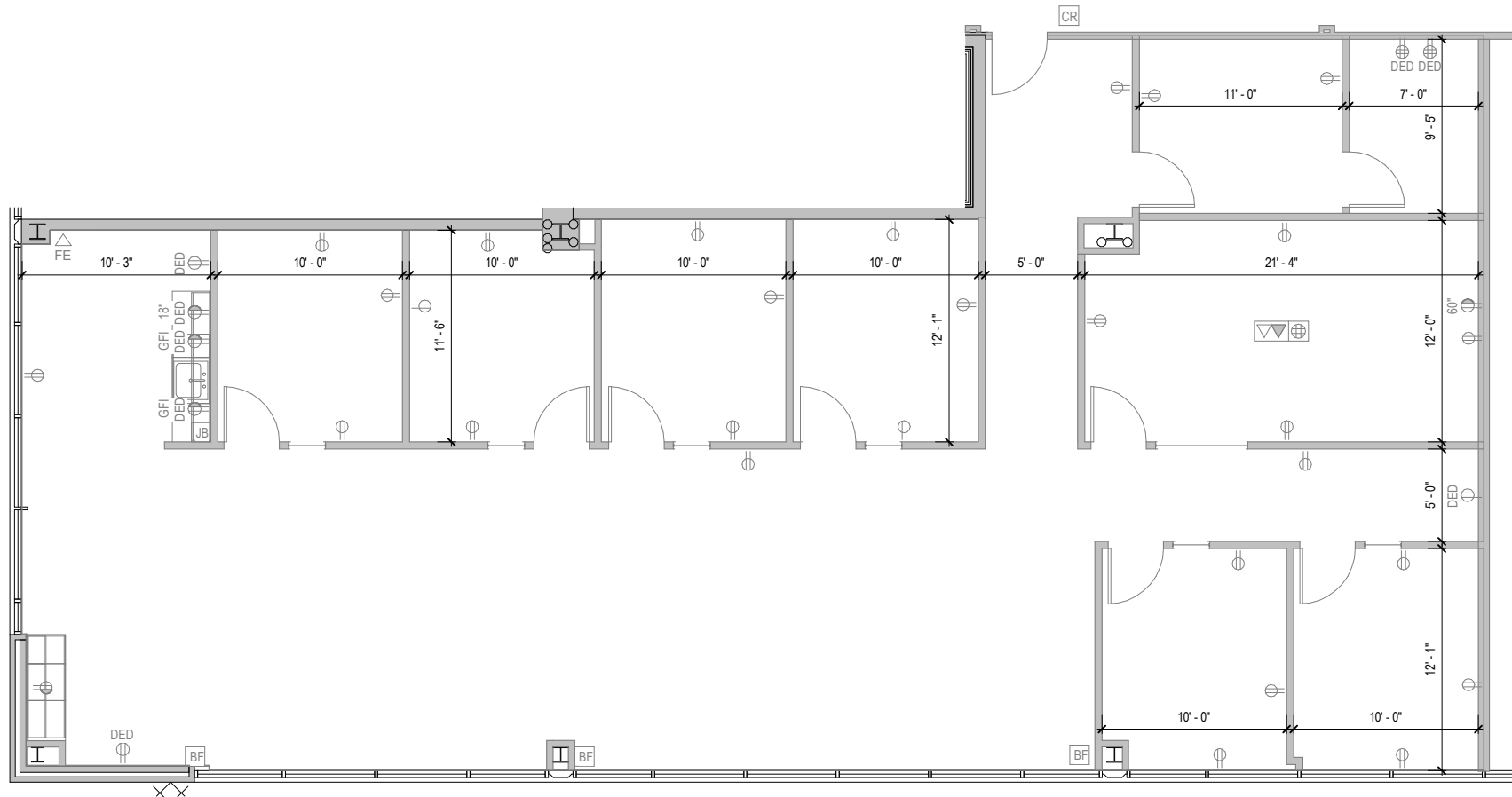
**Total SF Available:**  
**2,967 SF**

*Efficient office space  
with private offices and  
conference room*

**KEY PLAN**  
NOT TO SCALE



**Note:** This space plan is subject to existing field conditions. This drawing is proprietary and the exclusive property of St. John Properties, Inc. Any duplications, distribution, or other unauthorized use is strictly prohibited.





# Multi-Story Office

## Class 'A' office space

Melford Town Center includes three Class 'A' multi-story office buildings totaling more than 327,000 square feet of space. Tenant sizes from 1,252 square feet to 150,000 square feet of space offer businesses headquarters-worthy location.



17251 Melford Boulevard

### Multi-Story Class 'A' Office Buildings

16701 Melford Boulevard	150,000 SF	
16901 Melford Boulevard	150,000 SF	LEED SILVER
17251 Melford Boulevard	27,526 SF	

### Multi-Story Class 'A' Office Specifications

LEED ( <i>on select buildings</i> )	Certified Silver
Suite Sizes	1,252 up to 150,000 SF
Ceiling Height	9 ft. clear minimum
Elevator	Yes
Parking	5 spaces per 1,000 SF
HVAC	VAV with zone control
Zoning	EIA







#### Distances to:

Interstate 495 (Capital Beltway) .....	8 miles
Annapolis, MD (Downtown) .....	13 miles
BWI Airport .....	18 miles
Interstate 695 (Baltimore Beltway) .....	20 miles
Regan National Airport .....	24 miles
Baltimore, MD (Downtown) .....	25 miles
Columbia, MD .....	25 miles
Washington, D.C. (Downtown) .....	27 miles



Scan with your mobile device to take a virtual tour, download floor plans and more!

## Contact Us

#### OFFICE SPACE:

##### Bill Jautze

Assistant Vice President,  
Leasing

[BJautze@sjpi.com](mailto:BJautze@sjpi.com)  
410.369.1213

#### RETAIL SPACE:

##### Eric Llewellyn

Senior Retail Leasing  
Representative

[ELlewellyn@sjpi.com](mailto:ELlewellyn@sjpi.com)  
443.464.1308

#### FLEX/R&D SPACE:

##### Lacey Johansson

Assistant Vice President,  
Leasing

[LJohansson@sjpi.com](mailto:LJohansson@sjpi.com)  
410.369.1229

##### Bill Holzman

Vice President,  
Retail Leasing  
[BHolzman@sjpi.com](mailto:BHolzman@sjpi.com)  
410.369.1240

#### Southern Maryland Office:

16901 Melford Boulevard | Suite 300 | Bowie, MD 20715  
**301.970.0100 | [SJPI.COM/SOUTHERNMND](http://SJPI.COM/SOUTHERNMND)**

#### About St. John Properties

St. John Properties, Inc. is one of the nation's largest and most successful privately held commercial real estate firms. Founded in 1971, the vertically-integrated company develops, owns and manages office, flex/ research and development, warehouse, retail and multifamily space nationwide.

Connect with us @[@stjohnprop](https://www.instagram.com/stjohnprop)



This information contained in this publication has been obtained from sources believed to be reliable. St. John Properties makes no guarantee, warranty or representation about this information. Any projections, opinions, assumptions or estimates used here are for example only and do not represent the current or future performance of the property. Interested parties should conduct an independent investigation to determine whether the property suits their needs. REV 08/25