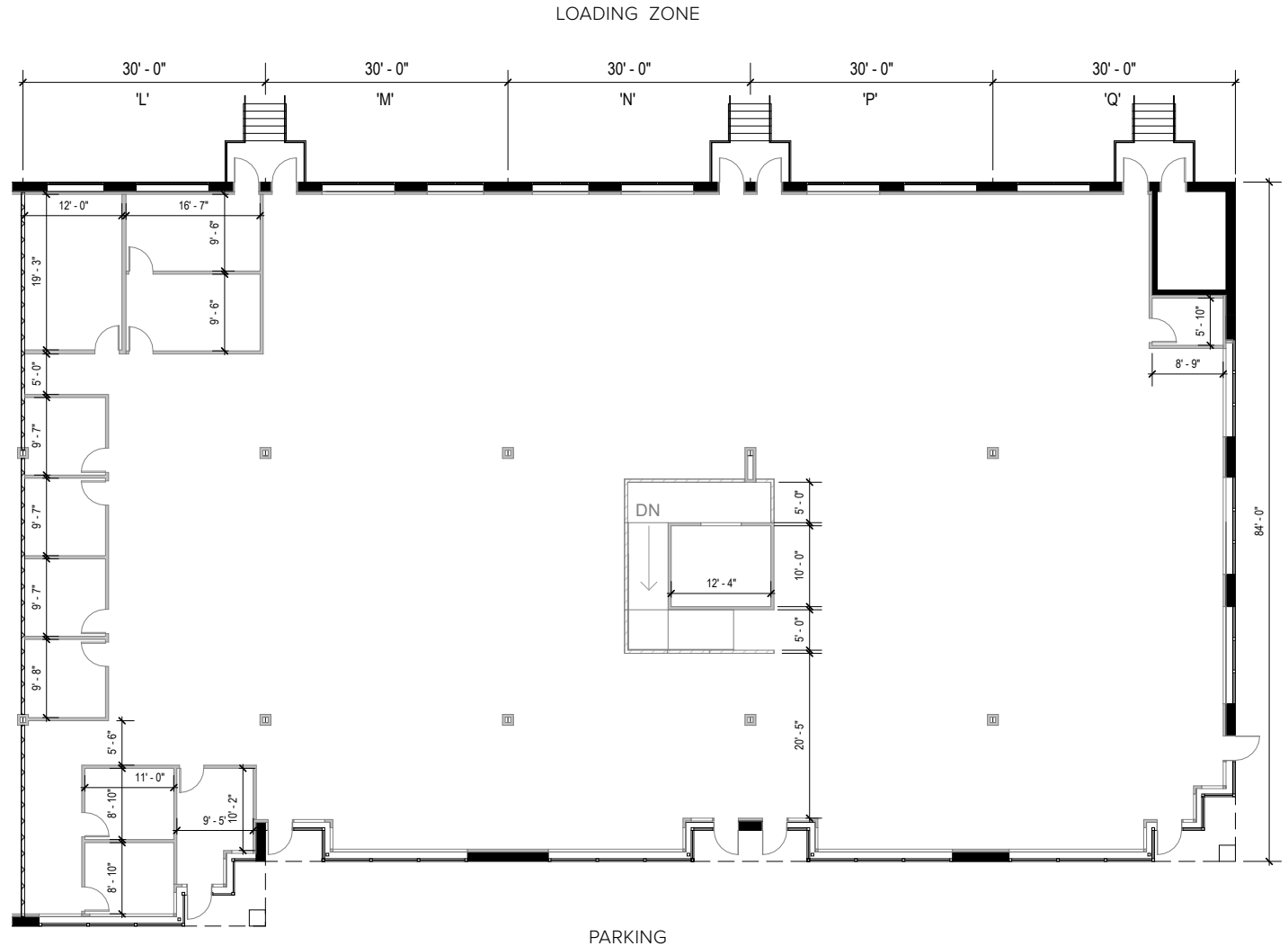
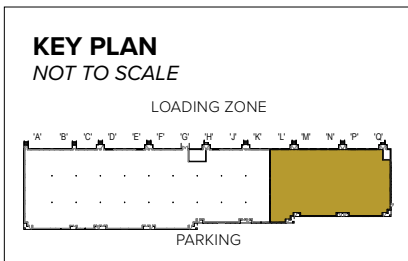




Total SF Available:
12,840 SF

Private offices, conference rooms, and ability to install dock door(s) if needed



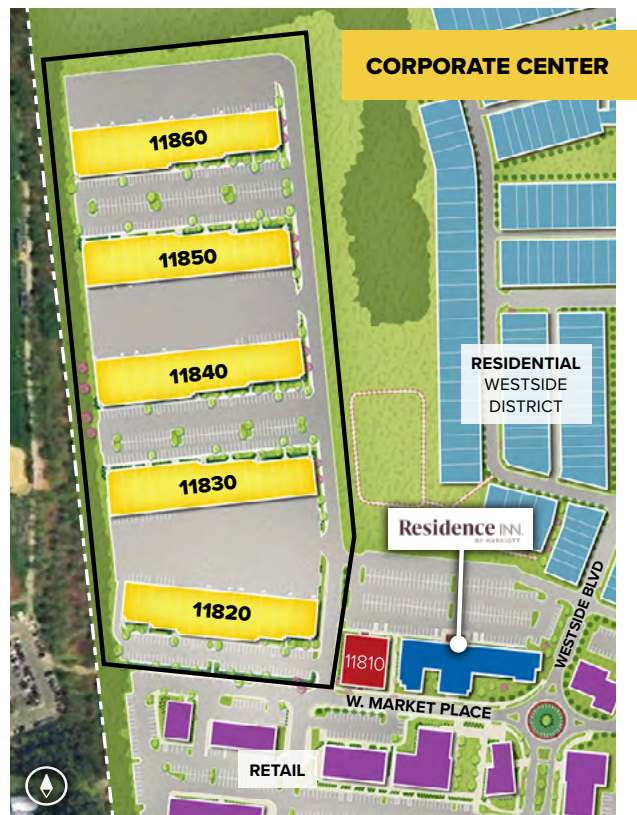
Note: This space plan is subject to existing field conditions. This drawing is proprietary and the exclusive property of St. John Properties, Inc. Any duplications, distribution, or other unauthorized use is strictly prohibited.



Corporate Center

Flex/R&D • Five buildings totaling 210,100 Sq. Ft.

Maple Lawn Corporate Center		
11820 West Market Place	39,620 SF	LEED SILVER
11830 West Market Place	42,620 SF	LEED GOLD
11840 West Market Place	42,620 SF	LEED GOLD
11850 West Market Place	42,620 SF	LEED GOLD
11860 West Market Place	42,620 SF	LEED GOLD
Flex/R&D Specifications		
LEED	Certified	
Suite Sizes	2,520 up to 42,620 SF	
Ceiling Height	16 ft. clear minimum	
Parking	4 spaces per 1,000 SF	
Heat	Gas	
Construction	Brick on block	
Loading	Dock or drive-in	
Zoning	MXD-3	





Scan code to take a virtual tour, download floor plans and more!

About St. John Properties

St. John Properties, Inc. is one of the nation's largest and most successful privately held commercial real estate firms. Founded in 1971, the vertically-integrated company develops, owns and manages office, flex/ research and development, warehouse, retail and multifamily space nationwide.

Connect with us @stjohnprop



Contact Us

Bill Jautze
Assistant Vice President, Leasing
BJautze@sjpi.com | 410.369.1213

Matt Lenihan
Executive Vice President, Leasing
MLenihan@sjpi.com | 410.369.1202

Corporate Headquarters:
2560 Lord Baltimore Drive
Baltimore, MD 21244
410.788.0100 | SJPI.COM



Master Developer: **GREENBAUM ENTERPRISES**



This information contained in this publication has been obtained from sources believed to be reliable. St. John Properties makes no guarantee, warranty or representation about this information. Any projections, opinions, assumptions or estimates used here are for example only and do not represent the current or future performance of the property. Interested parties should conduct an independent investigation to determine whether the property suits their needs. REV 12/25