

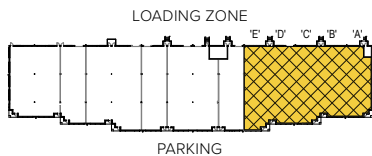
Maple Lawn Corporate Center
11820 West Market Place | Fulton, MD 20759
Suites A-E



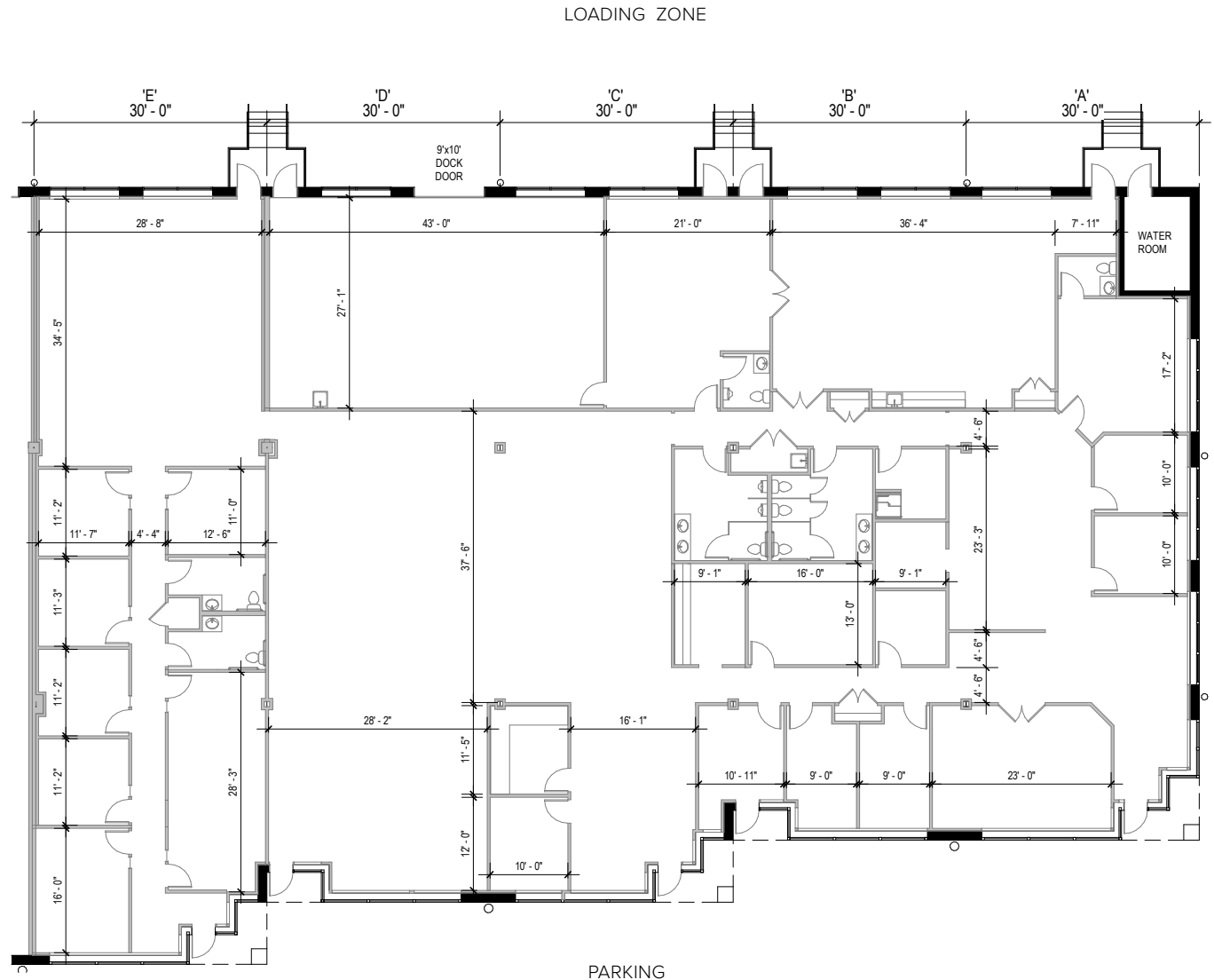
Total SF Available:
13,560 SF

11,697 sq. ft. office, 1,863 sq.
ft. warehouse, 9'x10' dock
door (1), end unit

KEY PLAN
NOT TO SCALE



Note: This space plan is subject to existing field conditions. This drawing is proprietary and the exclusive property of St. John Properties, Inc. Any duplications, distribution, or other unauthorized use is strictly prohibited.





Corporate Center

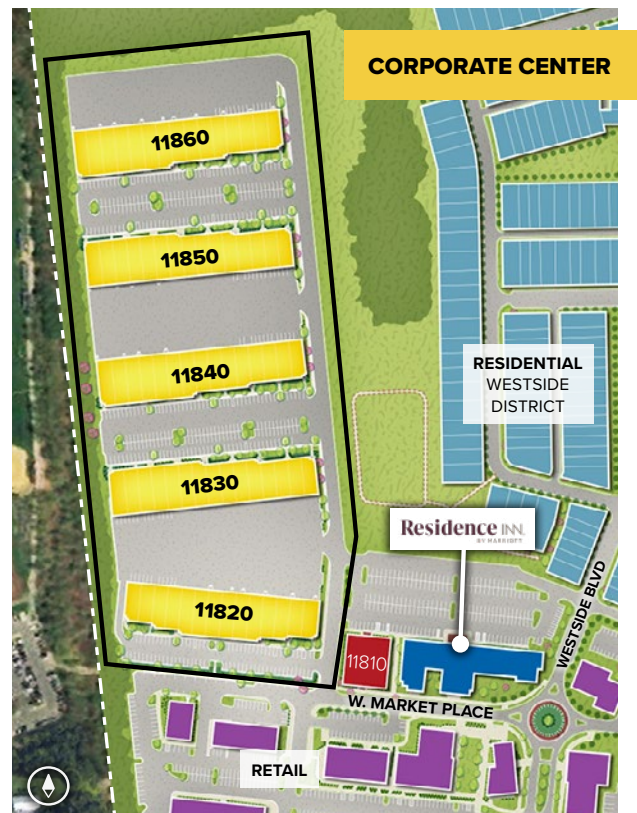
Flex/R&D • Five buildings totaling 210,100 Sq. Ft.

Maple Lawn Corporate Center

11820 West Market Place	39,620 SF	LEED SILVER
11830 West Market Place	42,620 SF	LEED GOLD
11840 West Market Place	42,620 SF	LEED GOLD
11850 West Market Place	42,620 SF	LEED GOLD
11860 West Market Place	42,620 SF	LEED GOLD

Flex/R&D Specifications

LEED	Certified
Suite Sizes	2,520 up to 42,620 SF
Ceiling Height	16 ft. clear minimum
Parking	4 spaces per 1,000 SF
Heat	Gas
Construction	Brick on block
Loading	Dock or drive-in
Zoning	MXD-3





Scan code to
take a virtual tour,
download floor plans
and more!

Contact Us

Bill Jautze

Assistant Vice President, Leasing
BJautze@sjpi.com | 410.369.1213

Matt Lenihan

Executive Vice President, Leasing
MLenihan@sjpi.com | 410.369.1202

Corporate Headquarters:

2560 Lord Baltimore Drive
Baltimore, MD 21244
410.788.0100 | SJPI.COM

About St. John Properties

St. John Properties, Inc. is one of the nation's largest and most successful privately held commercial real estate firms. Founded in 1971, the vertically-integrated company develops, owns and manages office, flex/ research and development, warehouse, retail and multifamily space nationwide.

Connect with us @stjohnprop



Master Developer: **GREENBAUM**
ENTERPRISES

