



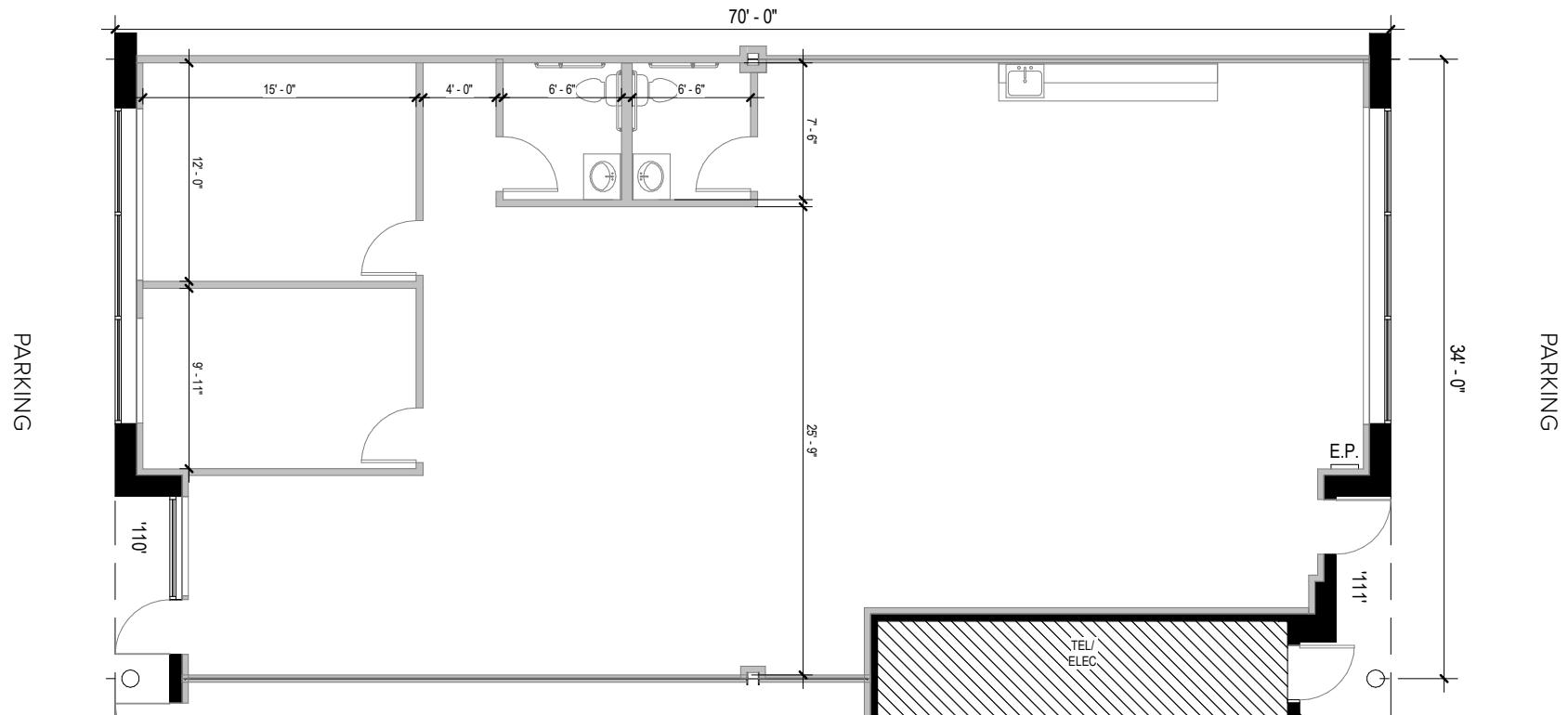
Total SF Available:
2,319 SF

*Exterior window offices,
park front location*

KEY PLAN
NOT TO SCALE



**CLICK TO VIEW
VIRTUAL TOUR**





Single-Story Office

Direct-entry office space

In total, Greenleigh includes eight single-story office buildings totaling nearly 250,000 square feet of space. Tenant sizes range from 1,384 square feet to 40,800 square feet, and offer businesses direct-entry access 24/7. Green space amenities are abundant throughout the campus, which features a putting green.



Single-story office interior build-out

Single-Story Office Space

Single-Story Office Buildings		
405 Williams Court	31,280 SF	
415 Williams Court	25,040 SF	
425 Williams Court	31,280 SF	
435 Williams Court	40,800 SF	LEED SILVER
10 Irondale Street	36,040 SF	LEED GOLD
12 Irondale Street	36,040 SF	LEED GOLD
11560 Crossroads Circle	23,630 SF	LEED SILVER
11570 Crossroads Circle	25,160 SF	LEED SILVER
Single-Story Office Specifications		
LEED (select buildings)	Certified Silver & Gold	
Suite Sizes	1,384 up to 40,800 SF	
Ceiling Height	10 ft. clear minimum	
Parking	5 spaces per 1,000 SF	
HVAC	Gas	
Zoning	ML-IM-M43	



Green space amenity



Scan now to take a virtual tour, download floor plans and more!

Contact Us

For additional leasing information or to schedule a tour, contact:

OFFICE/FLEX SPACE:

Bill Jautze

Assistant Vice President, Leasing

BJautze@sjpi.com | 410.369.1213

RETAIL SPACE:

Bill Holzman

Vice President, Retail Leasing

BHolzman@sjpi.com | 410.369.1240

Corporate Headquarters:

2560 Lord Baltimore Drive | Baltimore, MD 21244

410.788.0100 | SJPI.COM



About St. John Properties

St. John Properties, Inc. is one of the nation's largest and most successful privately held commercial real estate firms. Founded in 1971, the vertically-integrated company develops, owns and manages office, flex/ research and development, warehouse, retail and multifamily space nationwide.

Connect with us @stjohnprop



This information contained in this publication has been obtained from sources believed to be reliable. St. John Properties makes no guarantee, warranty or representation about this information. Any projections, opinions, assumptions or estimates used here are for example only and do not represent the current or future performance of the property. Interested parties should conduct an independent investigation to determine whether the property suits their needs. REV 05/25