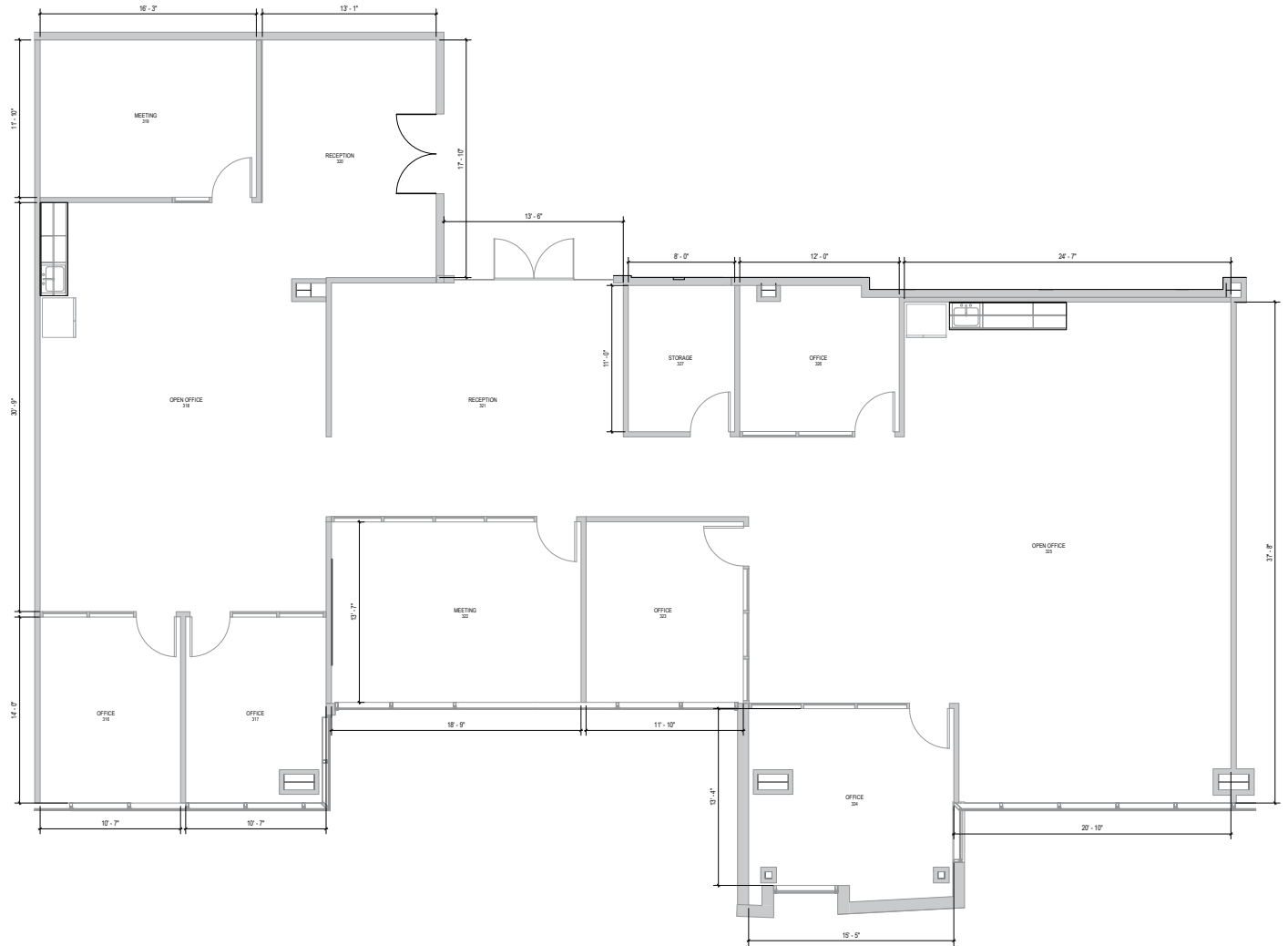
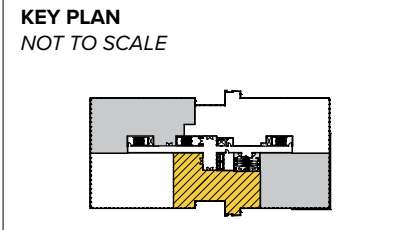
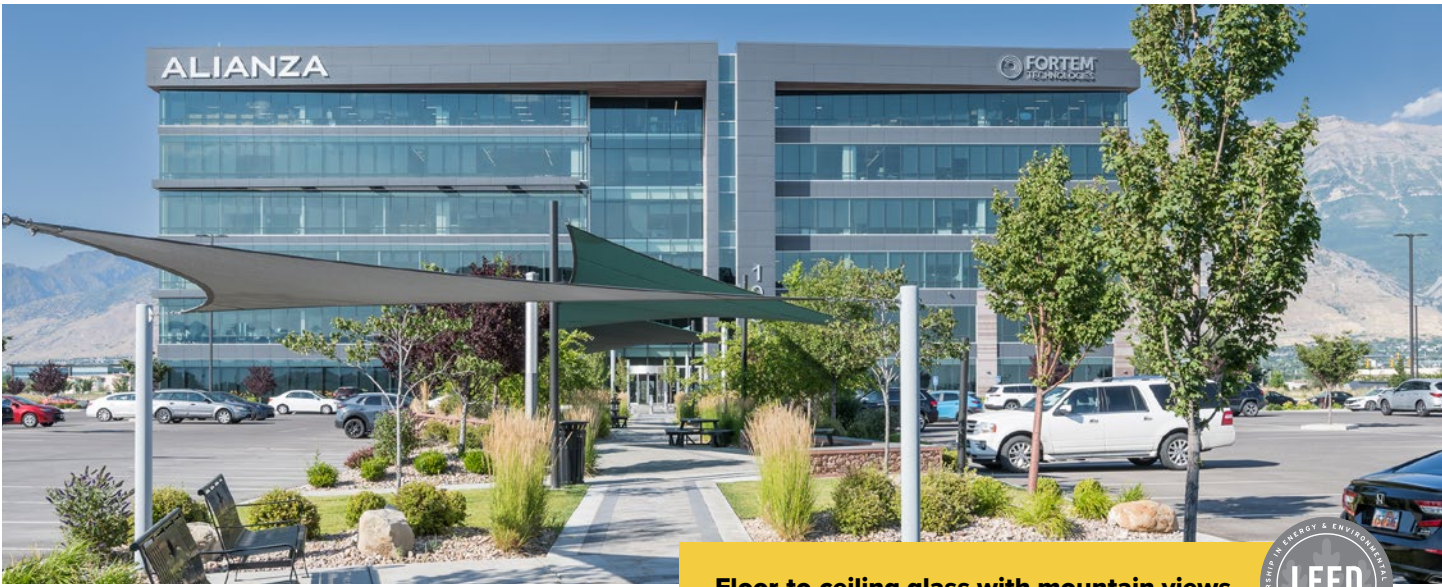




Total SF Available:
Up to 4,598 SF

Private offices (6), conference room, reception areas (2), and open spaces





Floor-to-ceiling glass with mountain views

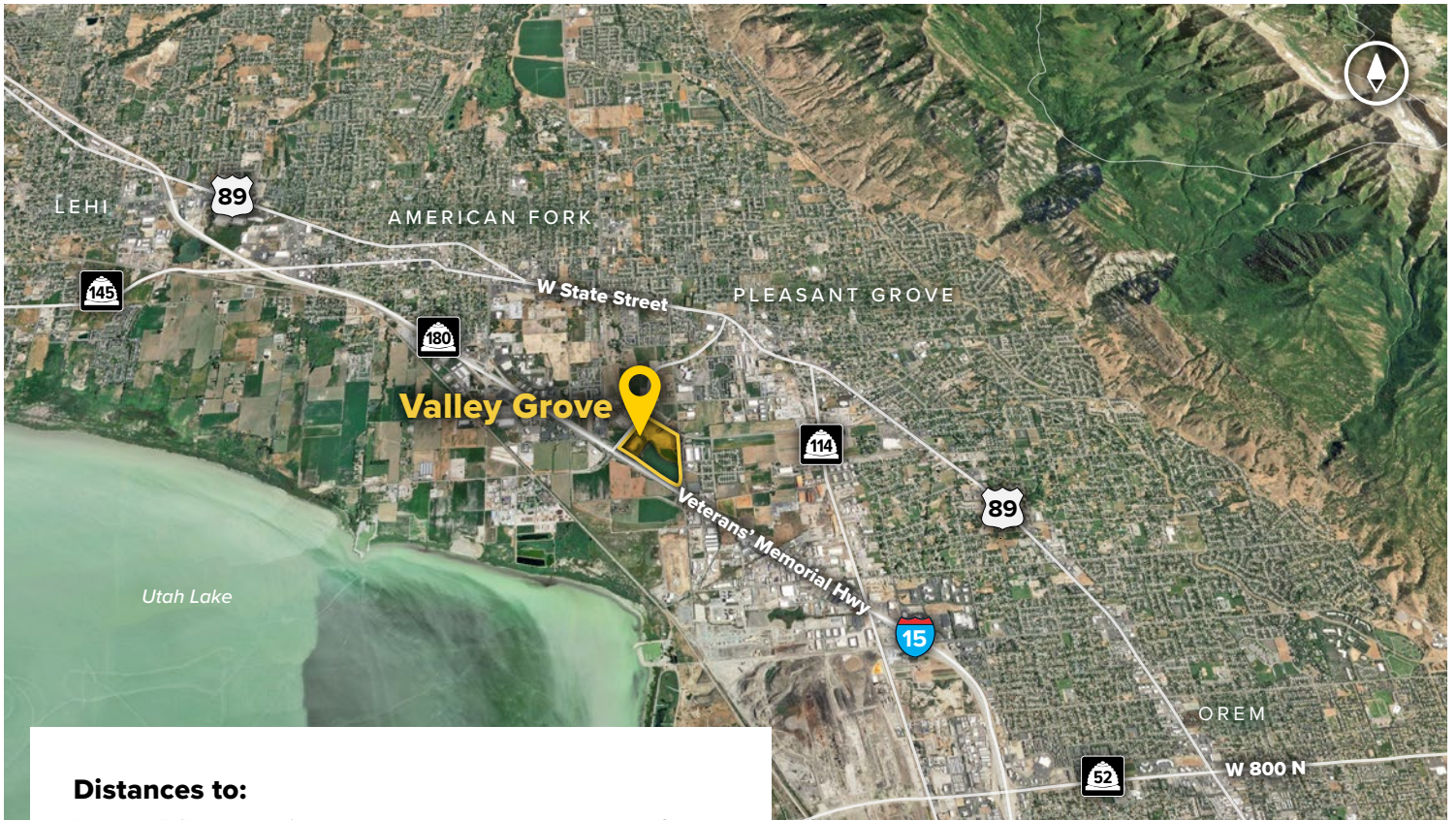


Valley Grove I

Mid-Rise Class 'A' Office

Valley Grove I	
1064 S North County Blvd	165,513 SF
Mid-Rise Office Specifications	
LEED	Certified
Suite Sizes	2,500 up to 165,513 SF
Ceiling Height	10-13 ft. clear minimum
Offices	Built to suit
Parking	5.5 spaces per 1,000 SF





Distances to:

- Provo, UT (Downtown) 12 miles
- Interstate 215 25 miles
- Salt Lake City, UT (Downtown) 34.5 miles
- Salt Lake City International Airport 38 miles



Scan now to take a virtual tour, download floor plans and more!

Contact Us

Scott Gifford

Assistant Vice President of Leasing
 SGifford@sjpi.com | 801.899.7991

Daniel Thomas

Regional Partner
 DThomas@sjpi.com | 801.899.7991

Utah Office:

1064 S North County Boulevard | Suite 190
 Pleasant Grove, Utah 84062

801.899.7991 | SJPI.COM/UTAH

About St. John Properties

St. John Properties, Inc. is one of the nation's largest and most successful privately held commercial real estate firms. Founded in 1971, the vertically-integrated company develops, owns and manages office, flex/research and development, warehouse, retail and multifamily space nationwide.

Connect with us @stjohnprop



This information contained in this publication has been obtained from sources believed to be reliable. St. John Properties makes no guarantee, warranty or representation about this information. Any projections, opinions, assumptions or estimates used here are for example only and do not represent the current or future performance of the property. Interested parties should conduct an independent investigation to determine whether the property suits their needs. REV 03/25