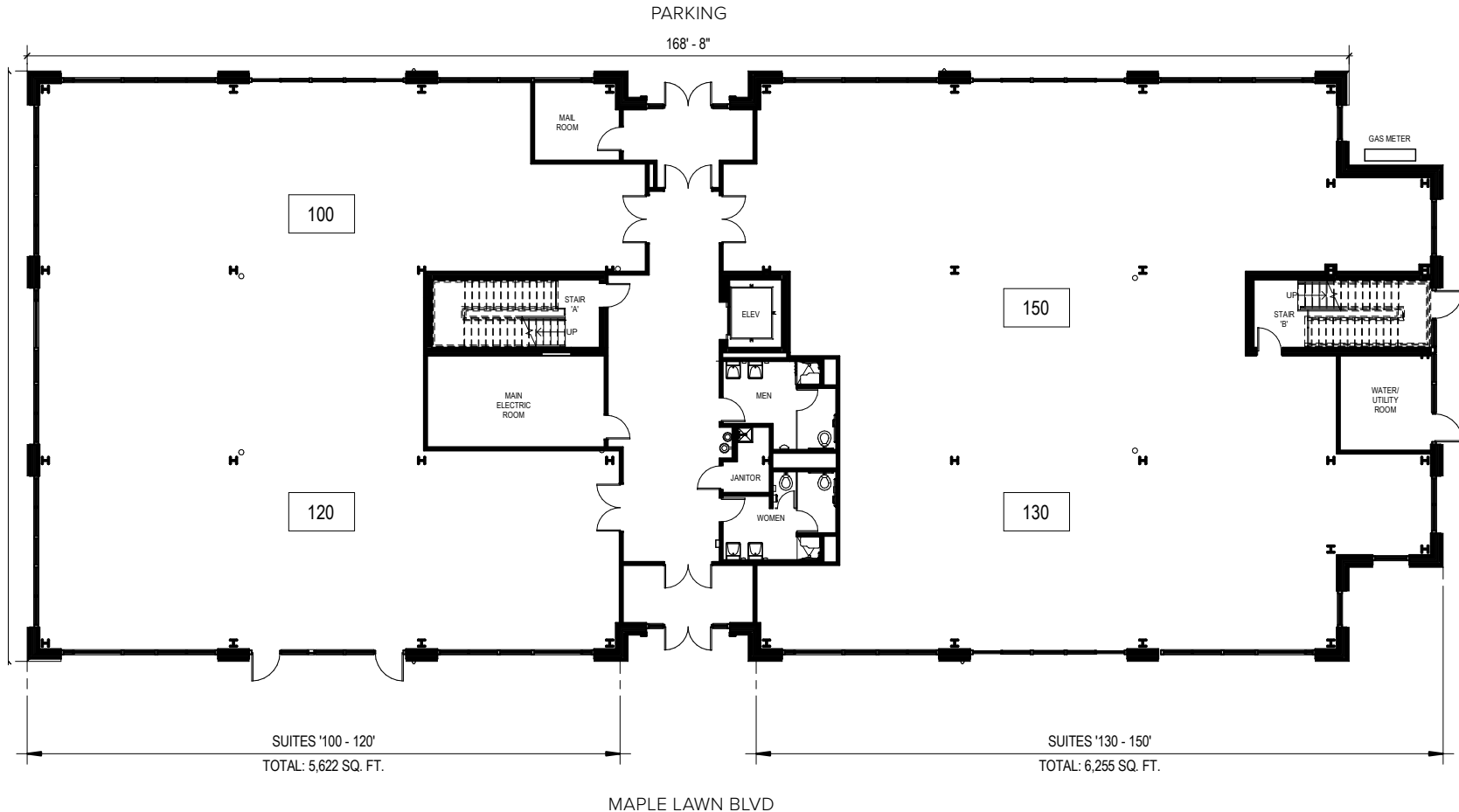


Total SF Available:
3,562 up to 36,934 SF

*New! Multi-Story, LEED Designed,
Class 'A' Medical Office Building*

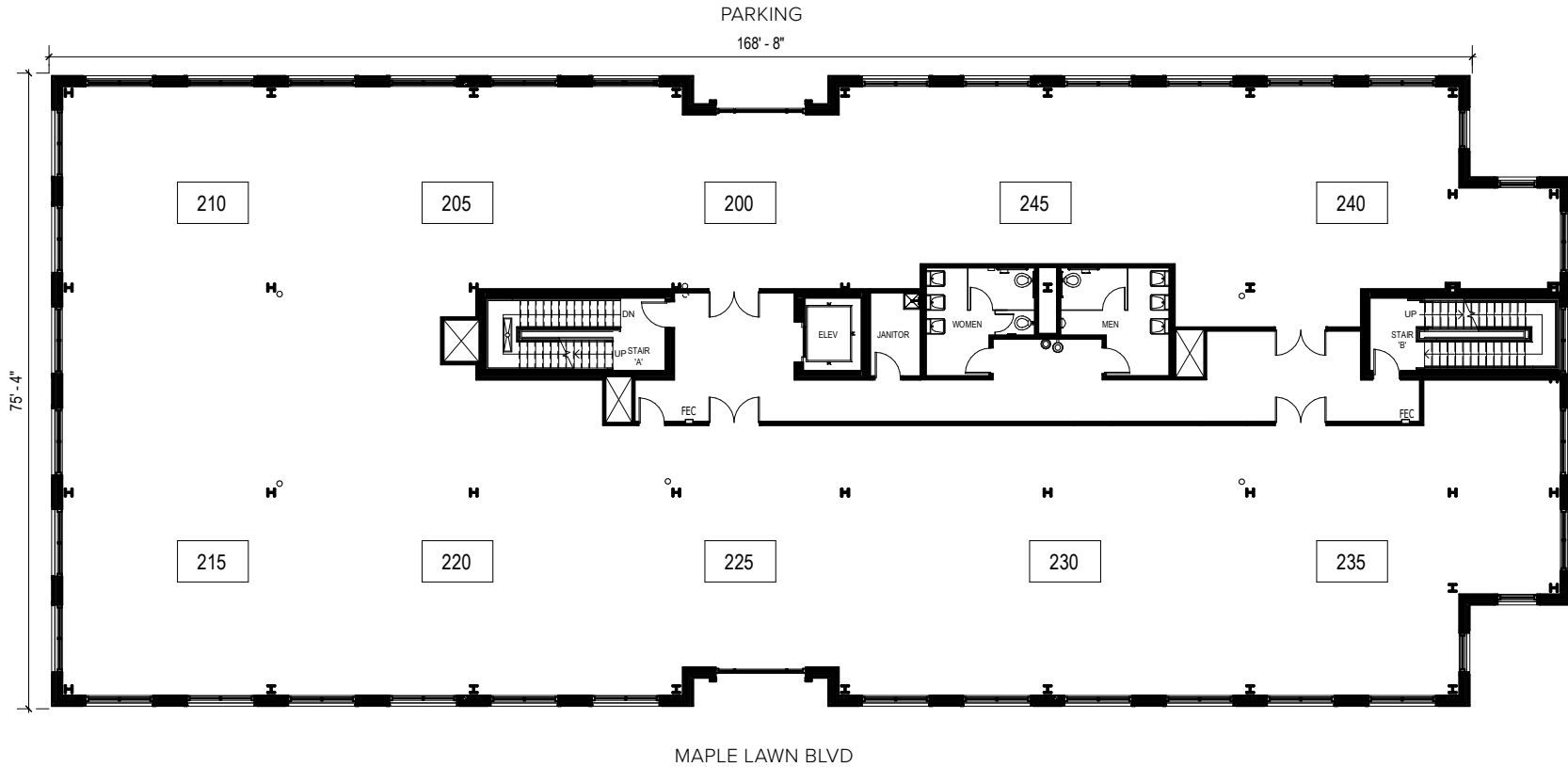
Note: This space plan is subject to existing field conditions. This drawing is proprietary and the exclusive property of St. John Properties, Inc. Any duplications, distribution, or other unauthorized use is strictly prohibited.



Total SF Available:
3,562 up to 36,934 SF

*New! Multi-Story, LEED Designed,
Class 'A' Medical Office Building*

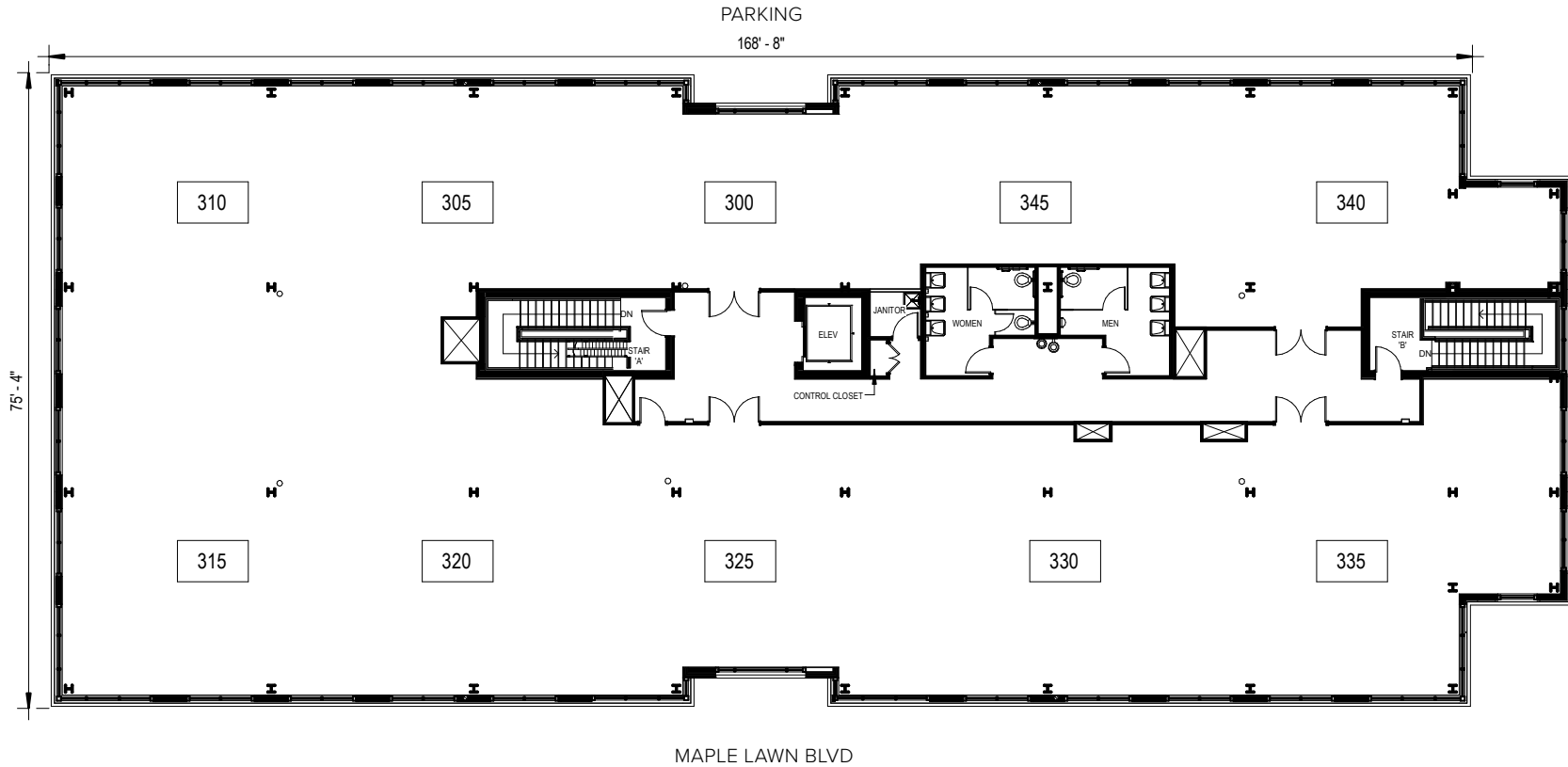
Note: This space plan is subject to existing field conditions. This drawing is proprietary and the exclusive property of St. John Properties, Inc. Any duplications, distribution, or other unauthorized use is strictly prohibited.



Total SF Available:
3,562 up to 36,934 SF

*New! Multi-Story, LEED Designed,
Class 'A' Medical Office Building*

Note: This space plan is subject to existing field conditions. This drawing is proprietary and the exclusive property of St. John Properties, Inc. Any duplications, distribution, or other unauthorized use is strictly prohibited.





Medical Office at Maple Lawn

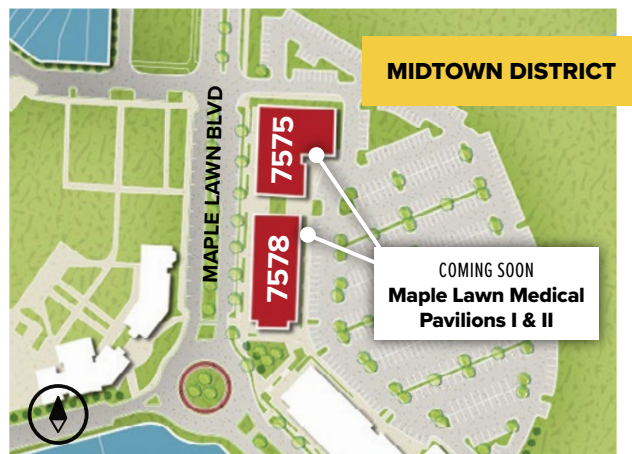
Class 'A' Office • Three buildings totaling 94,368 Sq. Ft.

Medical Office Buildings

7575 Maple Lawn Blvd	28,232 SF	LEED DESIGNED
7585 Maple Lawn Blvd	38,772 SF	LEED DESIGNED
11810 W Market Place	27,364 SF	LEED GOLD

Medical Office Specifications

LEED	Designed & Certified
Suite Sizes	2,500 up to 38,772 SF
Parking	5 spaces per 1,000 SF
Elevator	Yes
Accessibility	Automatic
HVAC	Gas, VAV
Lease Type	Full Service





Scan code to take a virtual tour, download floor plans and more!

About St. John Properties

St. John Properties, Inc. is one of the nation's largest and most successful privately held commercial real estate firms. Founded in 1971, the vertically-integrated company develops, owns and manages office, flex/ research and development, warehouse, retail and multifamily space nationwide.

Connect with us @stjohnprop



Contact Us

Bill Jautze

Assistant Vice President, Leasing
BJautze@sjpi.com | 410.369.1213

Matt Lenihan

Executive Vice President, Leasing
MLenihan@sjpi.com | 410.369.1202

Corporate Headquarters:

2560 Lord Baltimore Drive
Baltimore, MD 21244
410.788.0100 | SJPI.COM



This information contained in this publication has been obtained from sources believed to be reliable. St. John Properties makes no guarantee, warranty or representation about this information. Any projections, opinions, assumptions or estimates used here are for example only and do not represent the current or future performance of the property. Interested parties should conduct an independent investigation to determine whether the property suits their needs. REV 03/25