



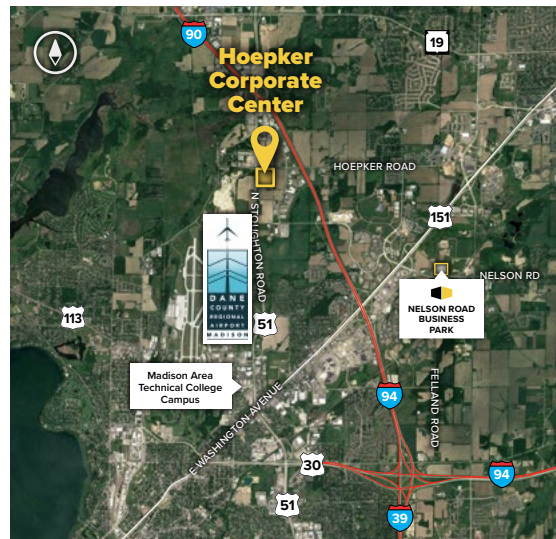
# Hoepker Corporate Center

Highway 51 & Hoepker Road  
Madison, WI 53704



## About the Property

Hoepker Corporate Center features three flex/R&D buildings totaling over 138,000 square feet, just 10 minutes east of Madison, WI, at Highway 51 and Hoepker Road. The masonry design and landscaping create a high-end image, offering tenants affordable, flexible floor plans for office, warehouse, R&D, light manufacturing, or showroom use.



## Flex/R&D Buildings

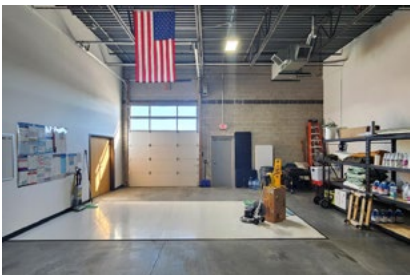
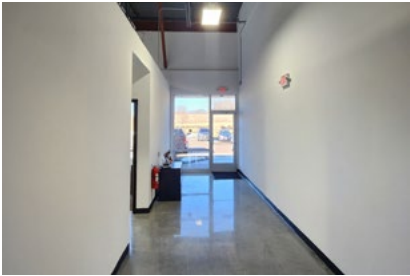
6608 Ronald Reagan Ave.	53,908 SF
6406 Ronald Reagan Ave.	42,784 SF
6504 Ronald Reagan Ave.	42,064 SF

## Building Specifications

Ceiling Height	16 ft. clear minimum
Parking	330 spaces
Construction	Masonry
Loading	Dock or drive-in
Zoning	IL

For more information on Hoepker Corporate Center, visit: [sjpi.com/hoepkercorporate](https://sjpi.com/hoepkercorporate)

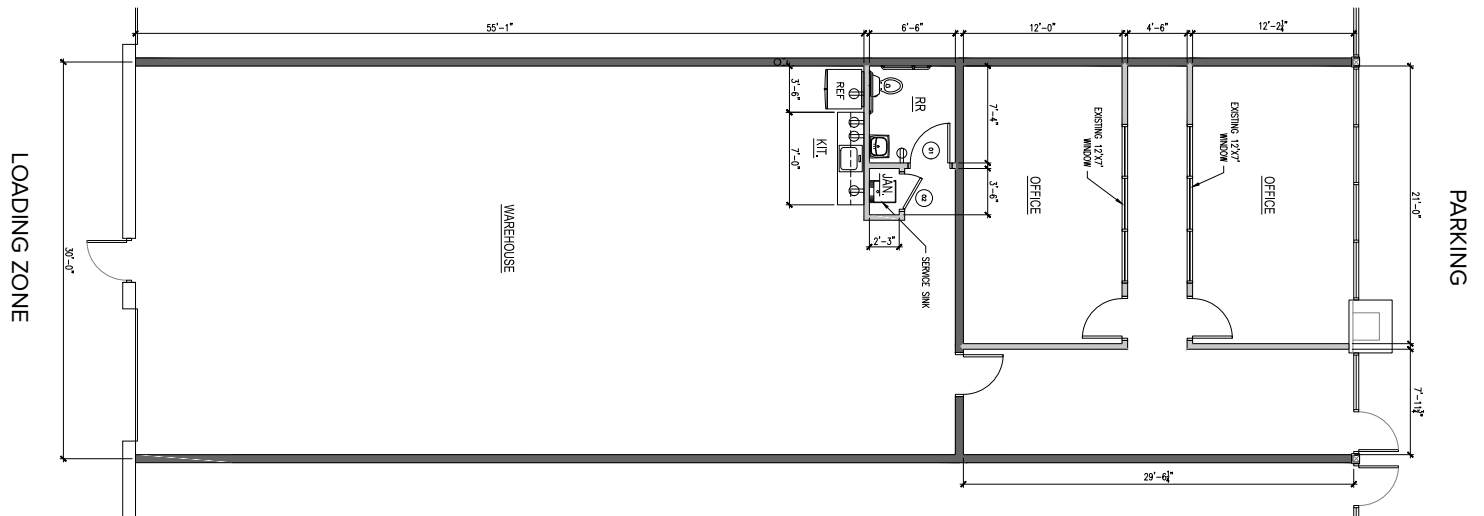
**Hoepker Corporate Center**  
6466 Ronald Reagan Avenue | Madison, WI 53704



**Total SF Available:**  
2,844 SF

946 sq. ft. office, 1,898 sq. ft. warehouse with 16' clear height and drive-in door

*Note: This space plan is subject to existing field conditions. This drawing is proprietary and the exclusive property of St. John Properties, Inc. Any duplications, distribution, or other unauthorized use is strictly prohibited.*



# Availabilities

## Flex/R&D Space at Hoepker Corporate Center

2,844 sq. ft.

6466 Ronald Reagan Ave

946 sq. ft. office, 1,898 sq. ft. warehouse with 16' clear height and drive-in door

## Contact Us

### Gregory Fax

*Regional Partner, Wisconsin*

GFax@sjpi.com | 262.524.0100

### Wisconsin Regional Office:

2000 Pewaukee Road | Suite A

Waukesha, WI 53188



262.524.0100 | [SJPI.COM/WISCONSIN](http://SJPI.COM/WISCONSIN)

