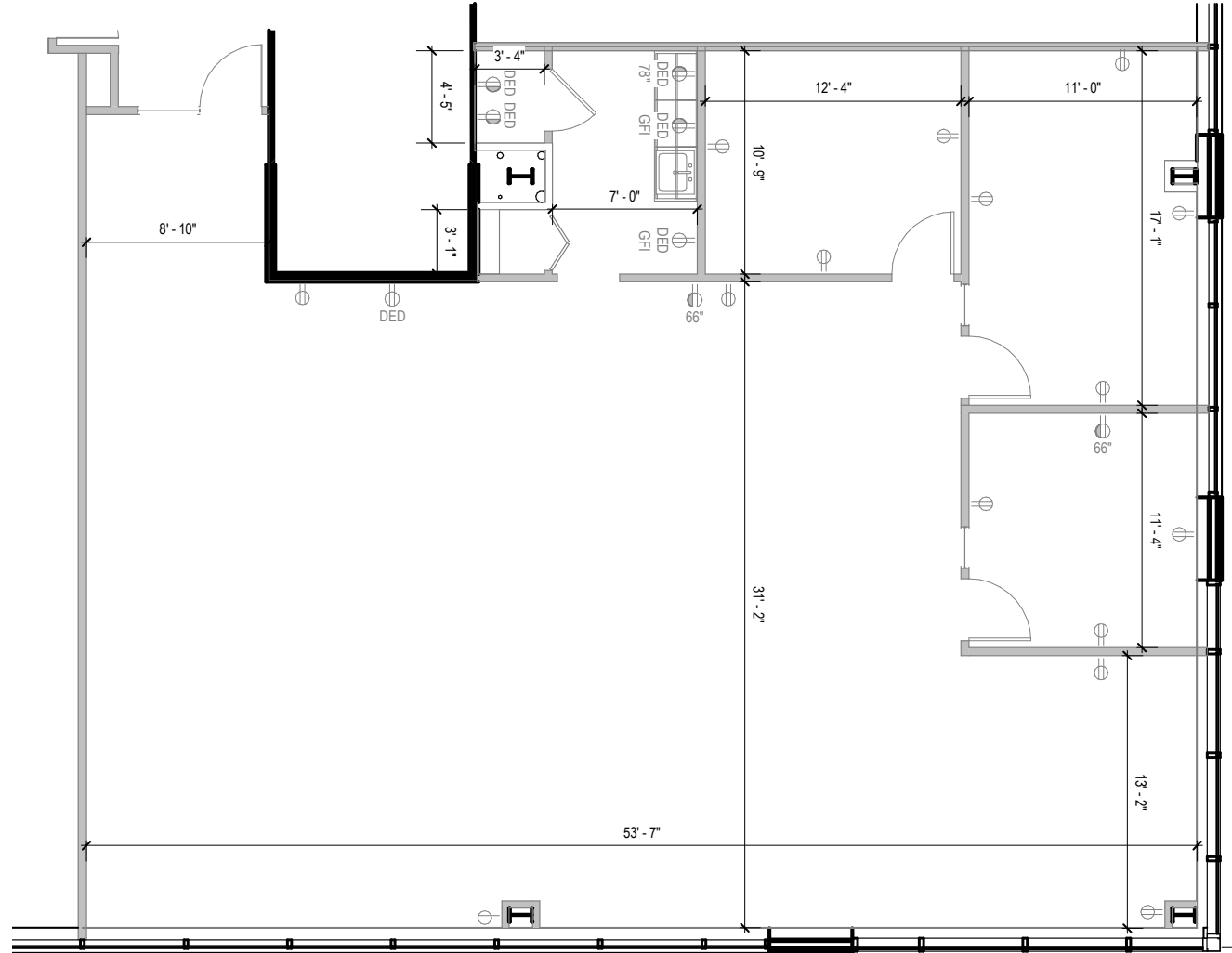




Total SF Available:
2,589 SF

New multi-story Class 'A' office in mixed-use community of Greenleigh; LEED Gold Certified building; build-to-suit shell space





Multi-Story Office

Full-service Class 'A' office

In total, Greenleigh will include two Class 'A' multi-story office buildings totaling more than 176,000 square feet of space. Tenant sizes from 5,000 square feet to 99,540 square feet of space offer businesses headquarters-worthy location.

Multi-Story Class 'A' Office Space

Multi-Story Office Buildings		
6201 Greenleigh Avenue	76,980 SF	LEED GOLD
6211 Greenleigh Avenue	99,540 SF	LEED GOLD
Multi-Story Office Specifications		
LEED	Certified Gold	
Suite Sizes	5,000 up to 99,540 SF	
Ceiling Height	10 ft. clear minimum	
Parking	4 spaces per 1,000 SF	
HVAC	Gas, VAV with zone control	
Zoning	ML-IM-M43	



6211 Greenleigh Avenue, class 'A' office lobby



6201 Greenleigh Avenue



Multi-story class 'A' office build-out



Scan now to take a virtual tour, download floor plans and more!

Contact Us

For additional leasing information or to schedule a tour, contact:

OFFICE/FLEX SPACE:

Bill Jautze

Assistant Vice President, Leasing

bjautze@sjpi.com | 410.369.1213

RETAIL SPACE:

Bill Holzman

Vice President, Retail Leasing

bholzman@sjpi.com | 410.369.1240

Corporate Headquarters:

2560 Lord Baltimore Drive | Baltimore, MD 21244

410.788.0100 | SJPI.COM



About St. John Properties

St. John Properties, Inc. is one of the nation's largest and most successful privately held commercial real estate firms. Founded in 1971, the vertically-integrated company develops, owns and manages office, flex/research and development, warehouse, retail and residential space nationwide.

Connect with us @stjohnprop

