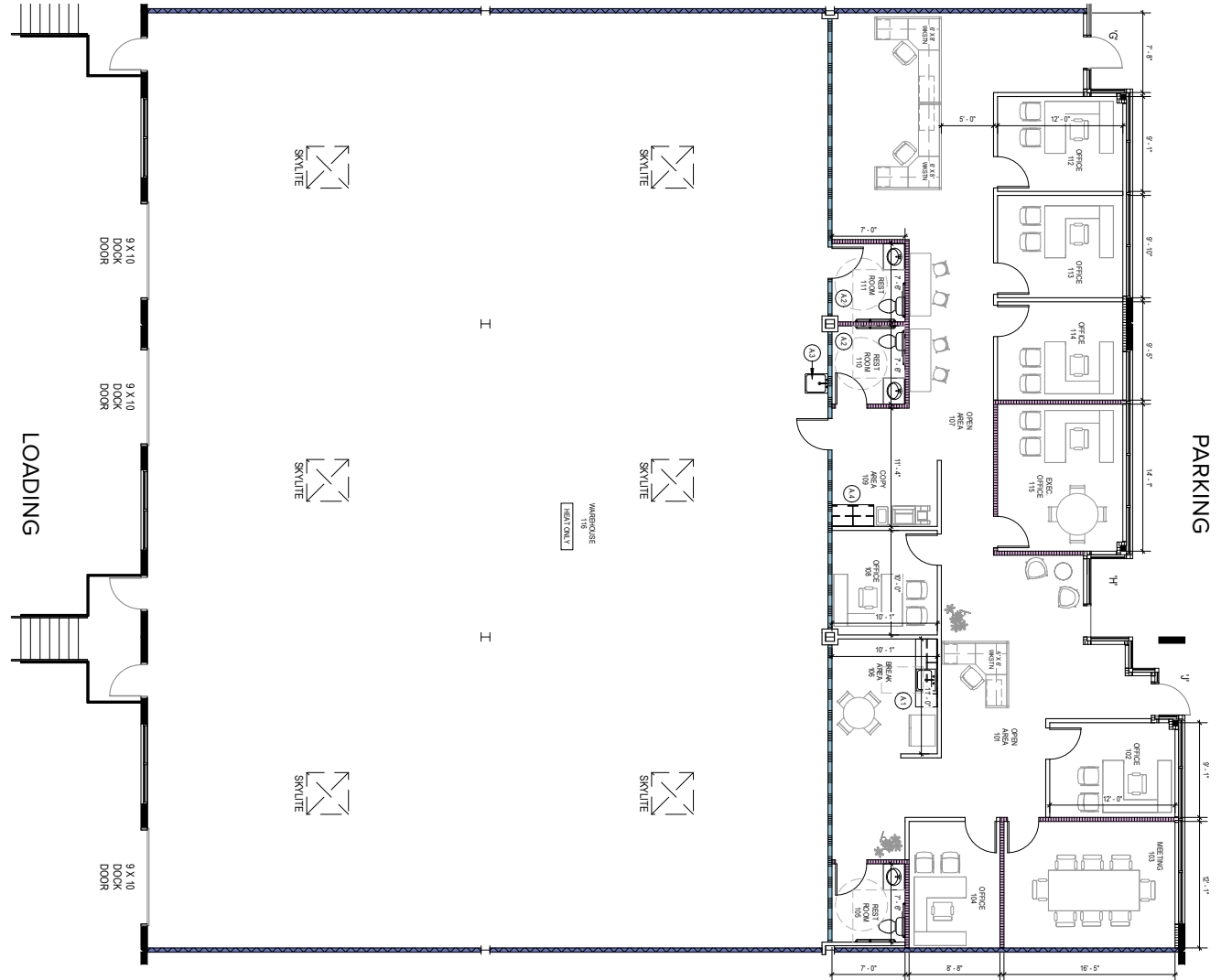
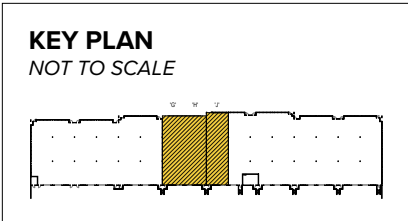


Westinghouse Crossing
5307 N Mays Street | Georgetown, TX 78626
Suites G–J



Total SF Available:
8,792 SF

New flex/R&D with 2,624 sq. ft. office, 6,168 sq. ft. warehouse, 18 ft. clear height, and 9'x10' dock doors (3)



About Westinghouse Crossing

Westinghouse Crossing is located at the intersection of Westinghouse Road and North Mays Street in Georgetown, Texas. The business community provides easy access to surrounding areas with direct access to I-35. The property is connected to University Boulevard, one of the busiest thoroughfares in the area, allowing tenants quick and convenient access to a wide array of retail amenities.

Upon completion, the project will contain 171,071 square feet of flex/R&D space, 39,610 square feet of single-story office, and 14,896 square feet of retail space. Development plans also include up to 1.37 acres of land for pad site use.

Pad Site	
Pad A	1.37± Acres

For more information on Westinghouse Crossing, visit: sjpi.com/westinghouse

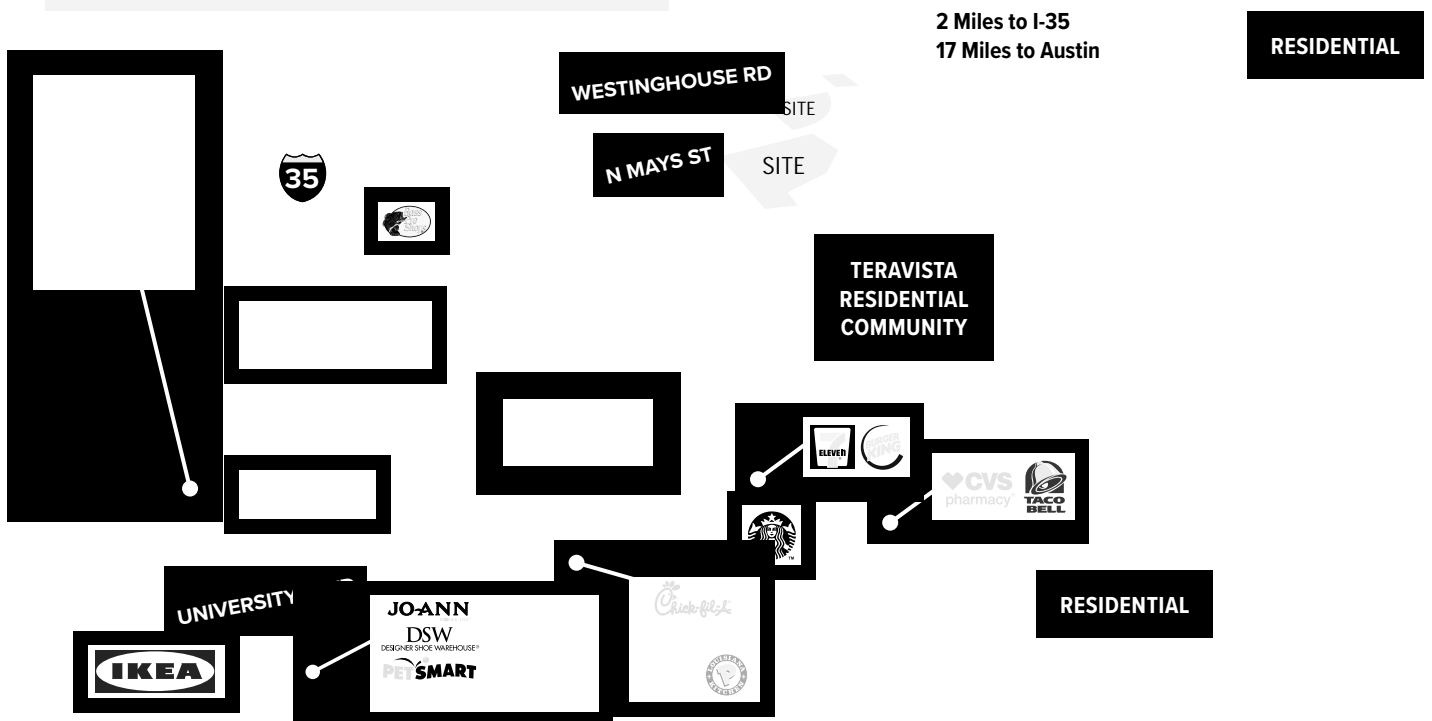
Flex/R&D Buildings	
5301 N Mays Street	30,058 SF
5303 N Mays Street	44,400 SF
5305 N Mays Street	51,013 SF
5307 N Mays Street	45,600 SF

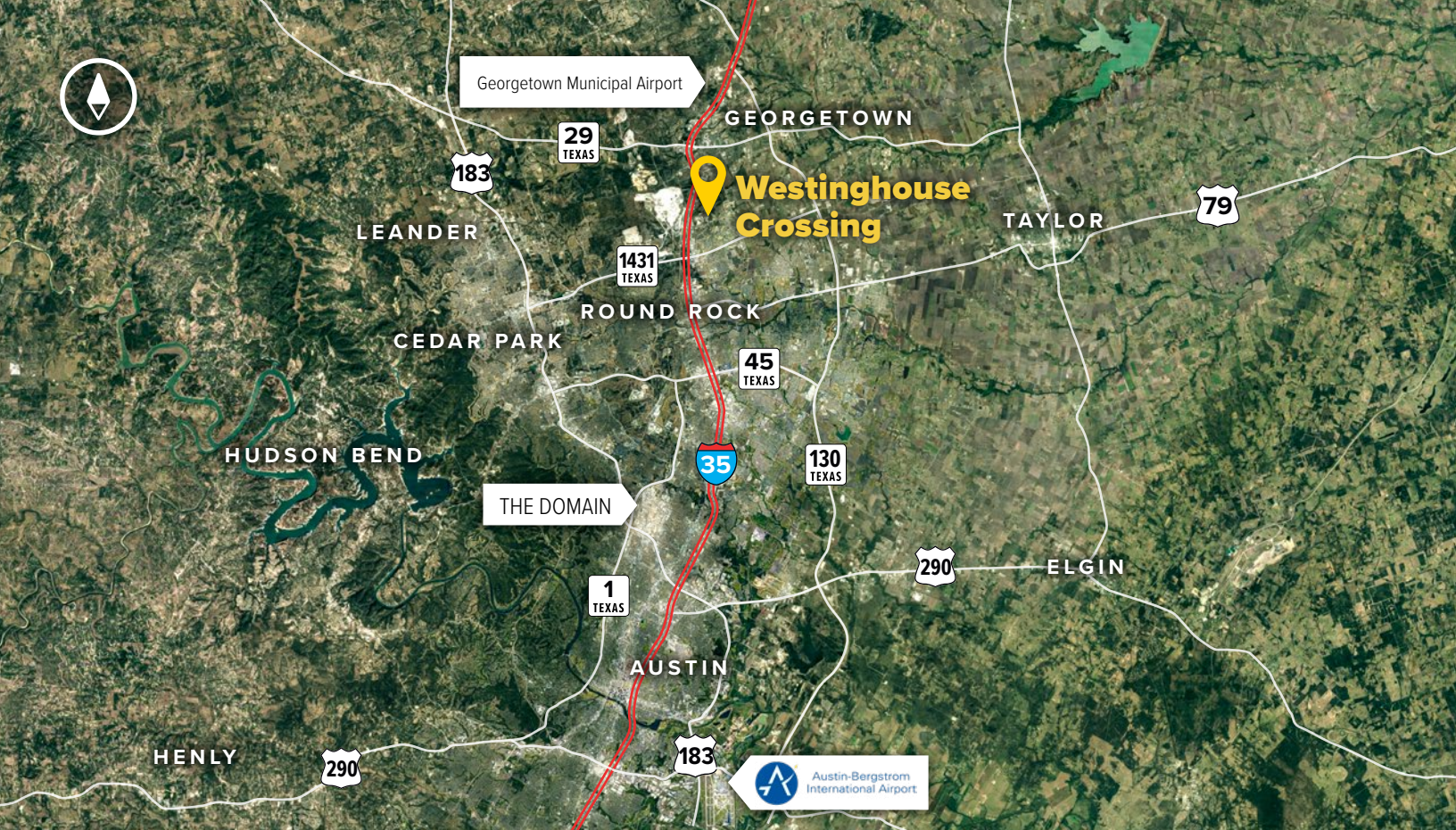
Flex/R&D Specifications	
Suite Sizes	Up to 51,013 SF
Ceiling Height	18 ft. clear
Parking	4 spaces per 1,000 SF
Construction	Tilt-up
Loading	Dock and drive-in
Zoning	C3

5402 N Mays Street	21,080 SF
5404 N Mays Street	18,530 SF

Single-Story Office Specifications	
Suite Sizes	Up to 21,080 SF
Ceiling Height	10 ft. clear
Parking	4 spaces per 1,000 SF
Construction	Brick on block
Zoning	C3

Retail Buildings	
5400 N Mays Street	14,896 SF





Distances to:

Interstate 35.....	1 mile
Georgetown, TX	8 miles
Austin, TX.....	17 miles
Austin-Bergstrom International Airport	27 miles
San Antonio, TX	99 miles
Houston, TX	169 miles
Dallas, TX	176 miles



Scan with your mobile device to take a virtual tour, download floor plans and more!

Contact Us

For additional leasing information or to schedule a tour, contact:

Brooke Harlander

Regional Partner

bharlander@sjpi.com | 512.907.0400

Austin Regional Office:

3800 N Lamar Boulevard | Suite 200
Austin, TX 78756

512.907.0400 | SJPI.COM/AUSTIN

About St. John Properties

St. John Properties, Inc. is one of the nation's largest and most successful privately held commercial real estate firms. Founded in 1971, the vertically-integrated company develops, owns and manages office, flex/ research and development, warehouse, retail and residential space nationwide.

Connect with us @stjohnprop



This information contained in this publication has been obtained from sources believed to be reliable. St. John Properties makes no guarantee, warranty or representation about this information. Any projections, opinions, assumptions or estimates used here are for example only and do not represent the current or future performance of the property. Interested parties should conduct an independent investigation to determine whether the property suits their needs. REV 10/24