

Valley Grove

Valley Grove I | Pleasant Grove, UT 84062

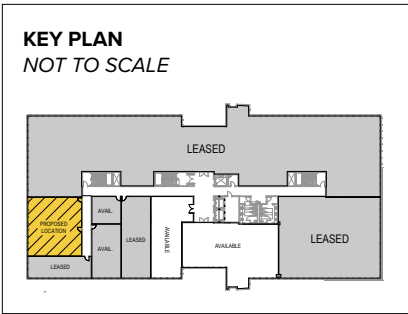
1064 S. North County Boulevard | Suites 390-395 | Third Floor



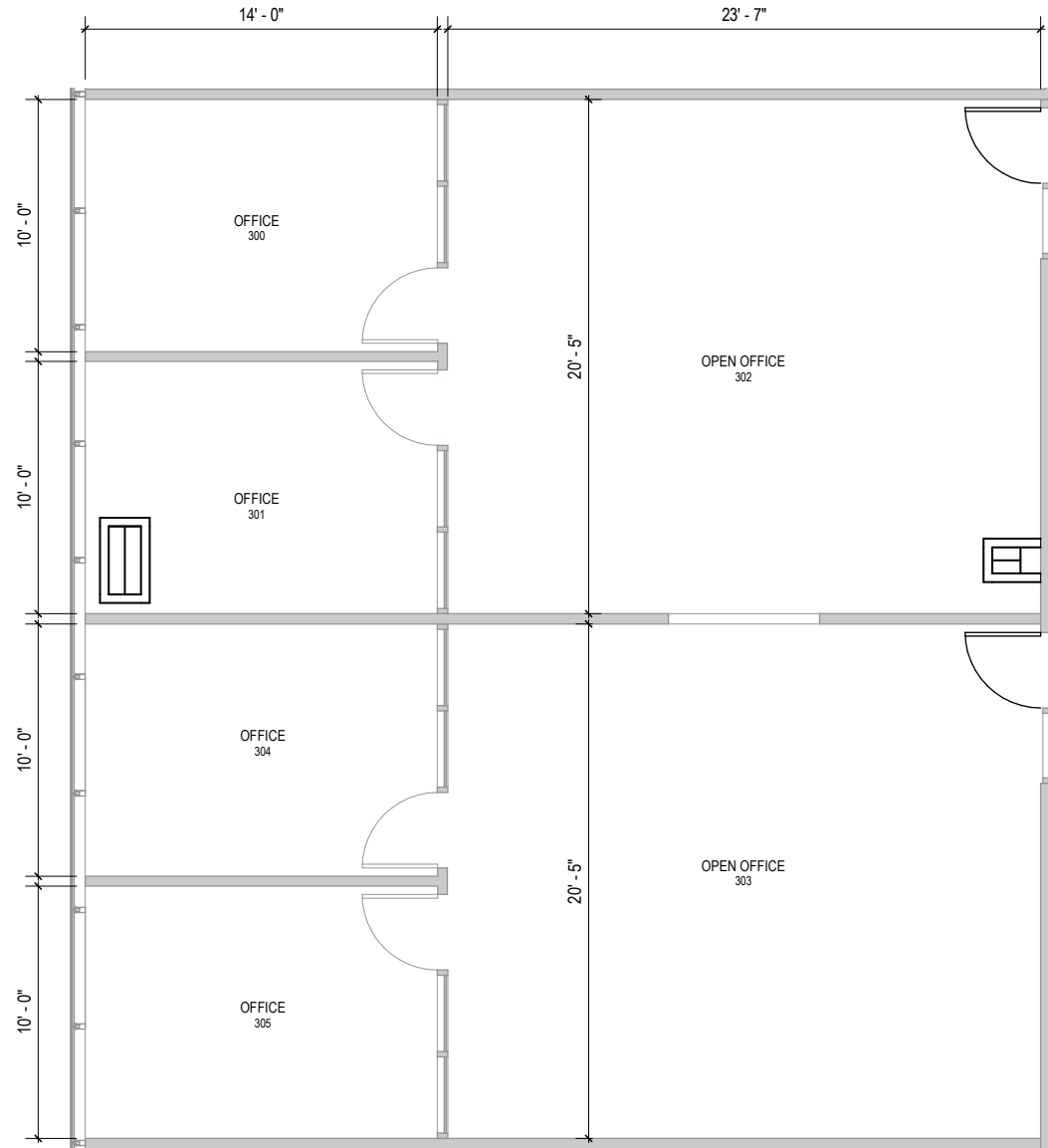
Total SF Available:

1,922 SF

Open office space with private offices (4)



Note: This space plan is subject to existing field conditions. This drawing is proprietary and the exclusive property of St. John Properties, Inc. Any duplications, distribution, or other unauthorized use is strictly prohibited.



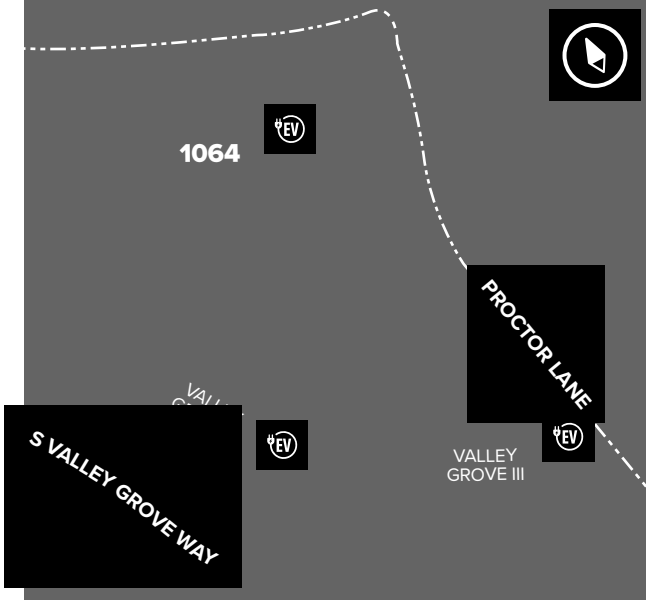


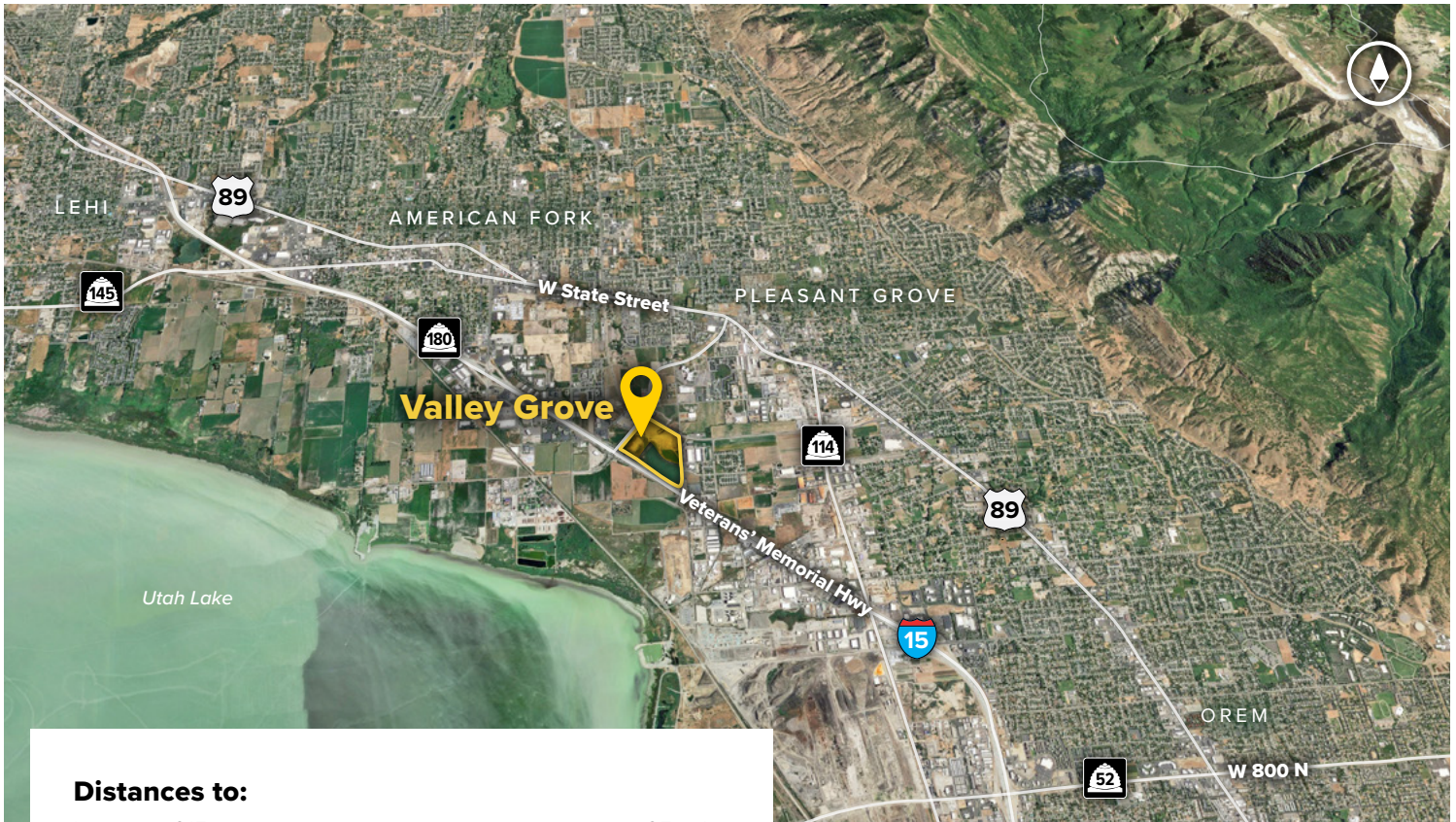
Floor-to-ceiling glass with mountain views

Valley Grove I

Mid-Rise Class 'A' Office

| Valley Grove I | |
|--------------------------------|-------------------------|
| 1064 S North County Blvd | 165,513 SF |
| Mid-Rise Office Specifications | |
| LEED | Certified |
| Suite Sizes | 2,500 up to 165,513 SF |
| Ceiling Height | 10-13 ft. clear minimum |
| Offices | Built to suit |
| Parking | 5.5 spaces per 1,000 SF |





Distances to:

- Interstate 215 25 miles
- Provo, UT (Downtown) 12 miles
- Salt Lake City, UT (Downtown) 34.5 miles
- Salt Lake City International Airport 38 miles



Scan now to take a virtual tour, download floor plans and more!

Contact Us

Scott Gifford

Assistant Vice President of Leasing
 sgifford@sjpi.com | 801.899.7991

Daniel Thomas

Regional Partner
 dthomas@sjpi.com | 801.899.7991

Utah Office:

1064 S North County Boulevard | Suite 190
 Pleasant Grove, Utah 84062

801.899.7991 | SJPI.COM/UTAH

About St. John Properties

St. John Properties, Inc. is one of the nation's largest and most successful privately held commercial real estate firms. Founded in 1971, the vertically-integrated company develops, owns and manages office, flex/ research and development, warehouse, retail and residential space nationwide.

Connect with us @stjohnprop



This information contained in this publication has been obtained from sources believed to be reliable. St. John Properties makes no guarantee, warranty or representation about this information. Any projections, opinions, assumptions or estimates used here are for example only and do not represent the current or future performance of the property. Interested parties should conduct an independent investigation to determine whether the property suits their needs. REV 09/24