



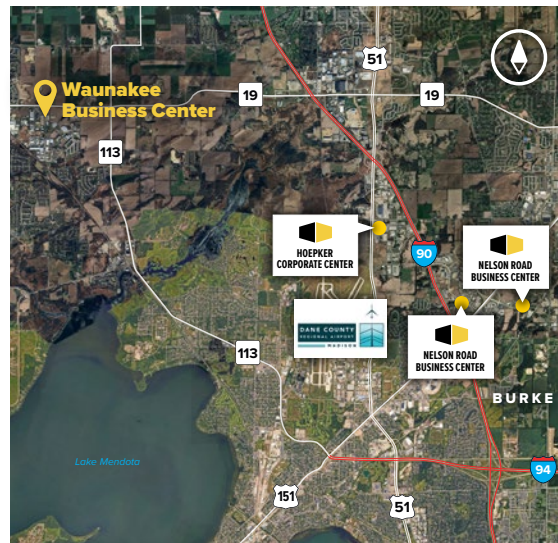
Waunakee Business Center

Moravian Valley Road at Frank H Street
Waunakee, WI 53597

UNIEK DESIGN & RESEARCH CENTER

About the Property

Waunakee Business Center consists of four buildings totaling more than 156,000 square feet, located 10 minutes north of the City of Madison, in Dane County. The business center is located one-mile west of the Highway 19 and Highway 113 intersection, just 10 minutes from Dane County Airport. Fine dining and fast food restaurants, shopping and lodging are all within walking distance. The project offers a affordable and flexible floor plans to meet a variety of office, warehouse, R&D, light manufacturing, or showroom requirements.



Flex/R&D/Office Buildings

| | |
|--------------------------|-----------|
| 201 Moravian Valley Road | 37,730 SF |
| 202 Moravian alley Road | 39,000 SF |
| 204 Moravian Valley Road | 39,000 SF |
| 1100 Frank H Street | 40,733 SF |

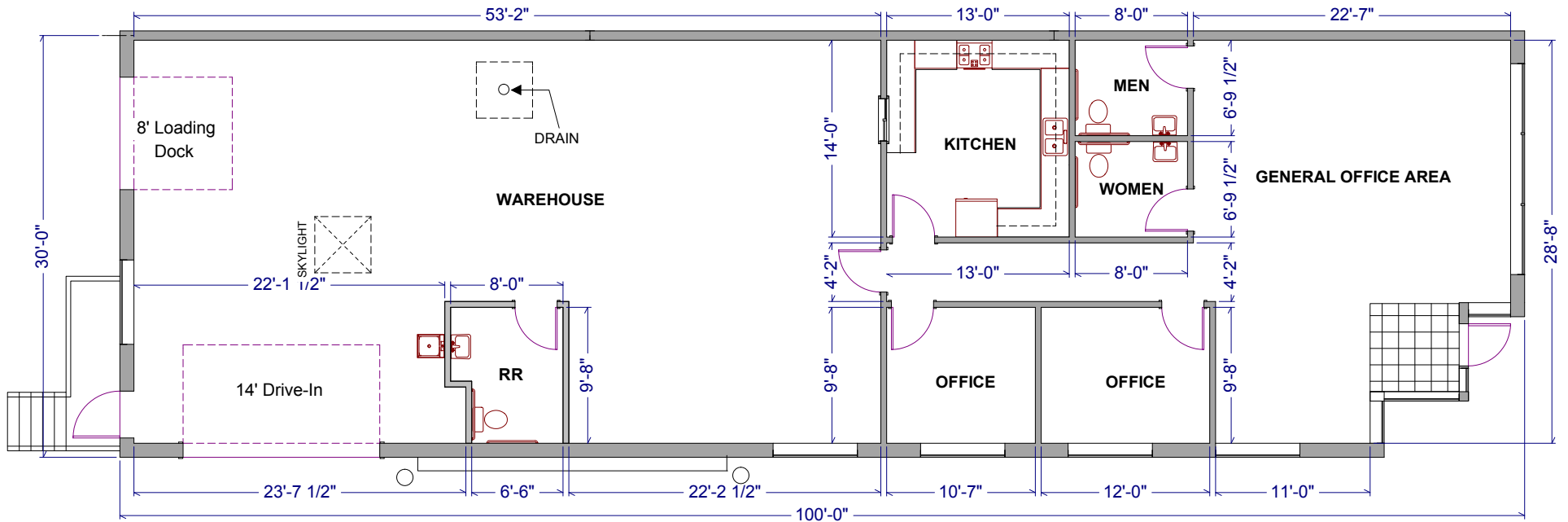
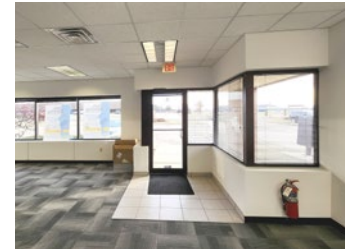
Building Specifications

| | |
|----------------------------|----------------------|
| Ceiling Height | 16 ft. clear minimum |
| Parking | |
| 201 Moravian Valley Rd | 4 spaces/1,000 SF |
| 202-204 Moravian Valley Rd | 220 spaces |
| 1100 Frank H Street | 89 spaces |
| Loading | Dock or drive-in |
| Zoning | Light Industrial |

For more information on Waunakee Business Center, visit: sjpi.com/waunakee

Total SF Available:
3,000 SF

1,367 sq. ft. office, 1,633 sq. ft. warehouse with private offices (2), open office space, breakroom, 14' drive-in door (1), and 8' dock door (1)



Availabilities

Space Available at Waunakee Business Center

| | | | |
|---------------|--------------------------|--------|---|
| 3,000 sq. ft. | 202 Moravian Valley Road | Ste. A | 1,367 sq. ft. office, 1,633 sq. ft. warehouse with private offices (2), open office space, breakroom, 14' drive-in door (1), and 8' dock door (1) |
|---------------|--------------------------|--------|---|

Contact Us

Gregory Fax

Regional Partner, Wisconsin

GFax@sjpi.com | 262.524.0100

Wisconsin Regional Office:

2000 Pewaukee Road | Suite A

Waukesha, WI 53188



262.524.0100 | SJPI.COM/WISCONSIN