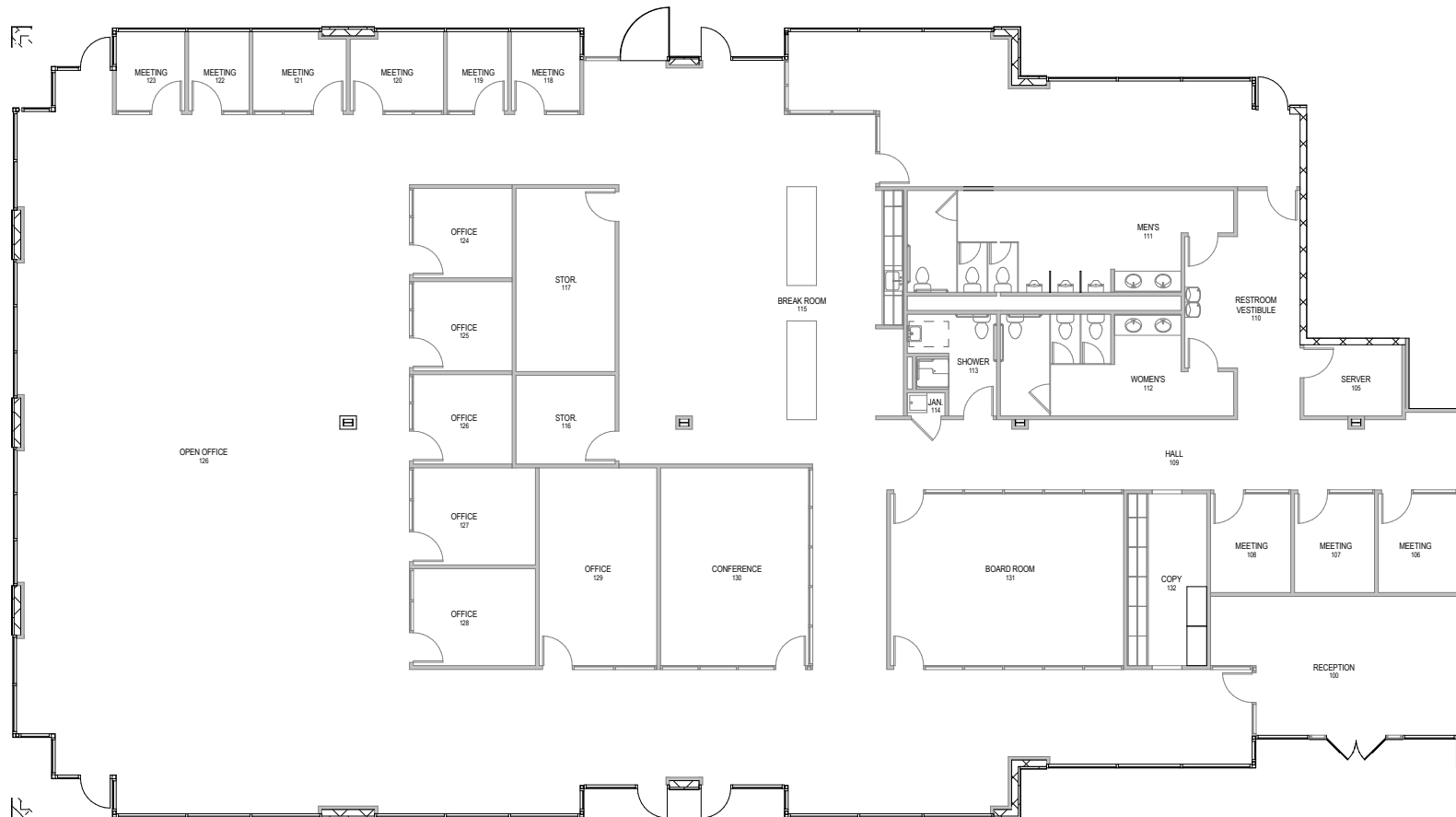




Total SF Available:
10,984 SF

Single-story office suite with partial build-out, bathrooms, open office space, enclosed office, and conference room

Note: This space plan is subject to existing field conditions. This drawing is proprietary and the exclusive property of St. John Properties, Inc. Any duplications, distribution, or other unauthorized use is strictly prohibited.





Single-Story Office

Direct-Entry Office

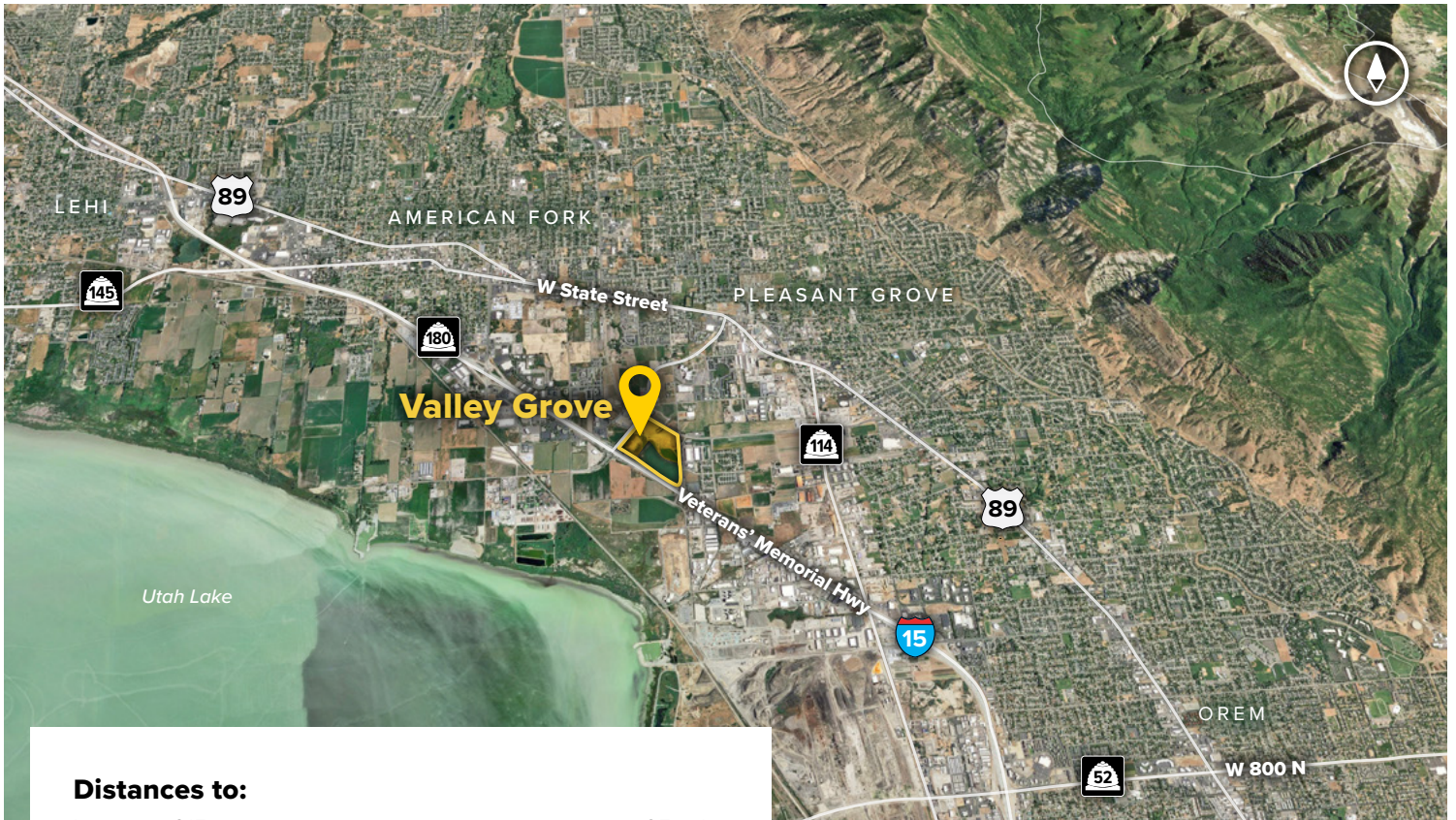
1982 W Pleasant Grove Blvd	28,560 SF
2015 W Grove Parkway	25,840 SF
2054 W Grove Parkway	25,374 SF
2086 W Grove Parkway	23,454 SF

Single-Story Office Specifications

LEED	Designed
<i>1982 W Pleasant Grove Blvd & 2015 W Grove Parkway:</i>	Certified
Suite Sizes	1,245 up to 28,560 SF
Ceiling Height	10-14 ft. clear minimum
Offices	Built to suit & existing
Parking	5.5 spaces per 1,000 SF



W PLEASANT GROVE BLVD



Distances to:

- Interstate 215 25 miles
- Provo, UT (Downtown) 12 miles
- Salt Lake City, UT (Downtown) 34.5 miles
- Salt Lake City International Airport 38 miles



Scan now to take a virtual tour, download floor plans and more!

Contact Us

Scott Gifford

Assistant Vice President of Leasing
 sgifford@sjpi.com | 801.899.7991

Daniel Thomas

Regional Partner
 dthomas@sjpi.com | 801.899.7991

Utah Office:

1064 S North County Boulevard | Suite 190
 Pleasant Grove, Utah 84062

801.899.7991 | SJPI.COM/UTAH

About St. John Properties

St. John Properties, Inc. is one of the nation's largest and most successful privately held commercial real estate firms. Founded in 1971, the vertically-integrated company develops, owns and manages office, flex/ research and development, warehouse, retail and residential space nationwide.

Connect with us @stjohnprop



This information contained in this publication has been obtained from sources believed to be reliable. St. John Properties makes no guarantee, warranty or representation about this information. Any projections, opinions, assumptions or estimates used here are for example only and do not represent the current or future performance of the property. Interested parties should conduct an independent investigation to determine whether the property suits their needs. REV 09/24