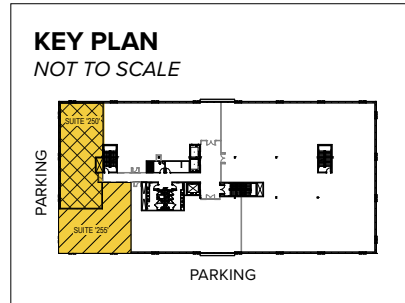


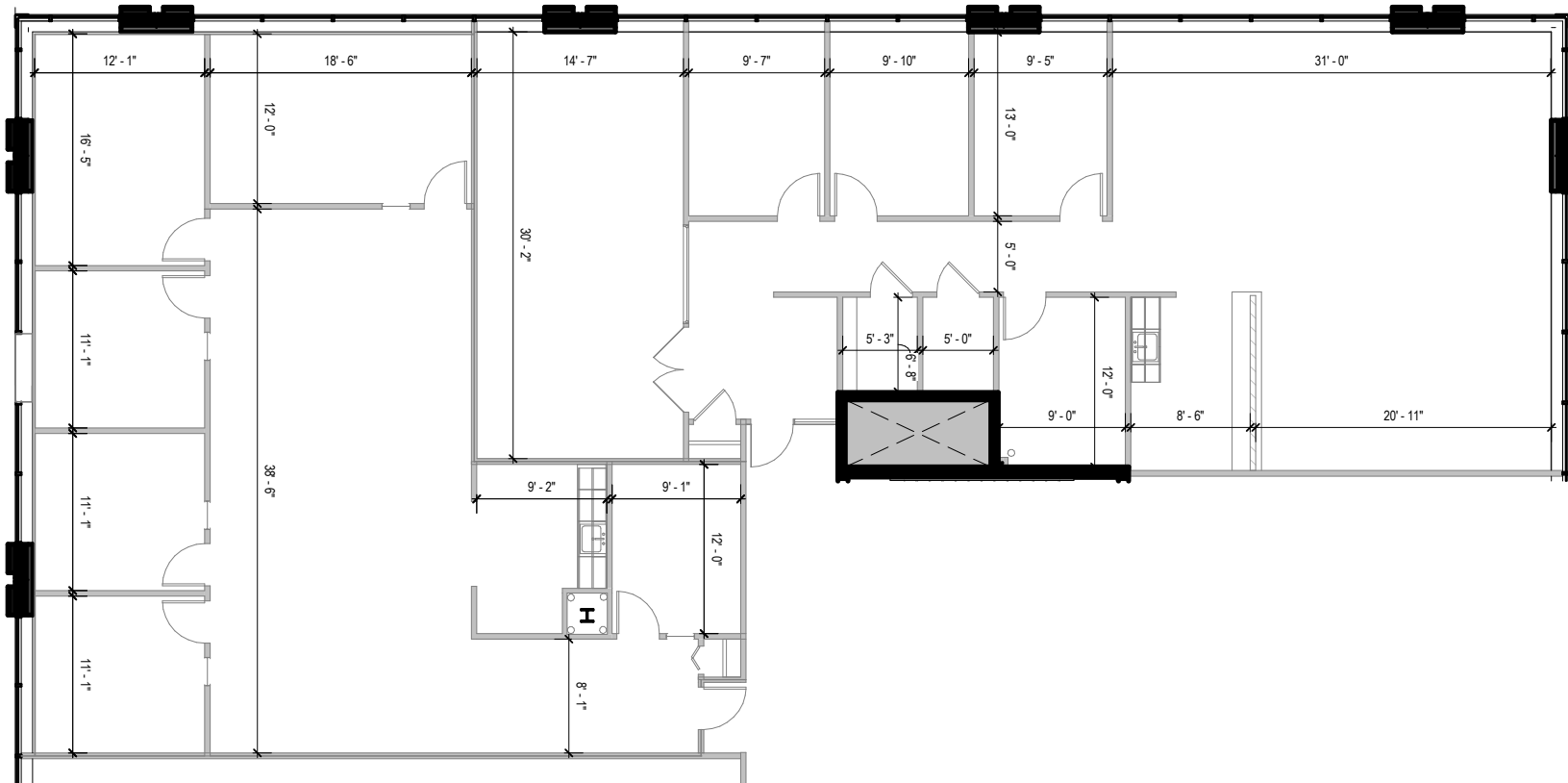


**Total SF Available:**  
5,042 SF

*Corner unit with great glass line, multiple private offices and room for cubicles*



*Note: This space plan is subject to existing field conditions. This drawing is proprietary and the exclusive property of St. John Properties, Inc. Any duplications, distribution, or other unauthorized use is strictly prohibited.*





# 231 Najoles Road

**I-97 Business Park**  
**Millersville, MD 21108**

## About the Building

231 Najoles Road is a 126,500 square foot LEED Gold Certified five-story Class 'A' Office building located within I-97 Business Park, a 552,160 square foot business community. The building has an on-site coffee house located on the first floor.



<b>231 Najoles Road</b>	<b>126,500 SF</b>
<b>Five-Story Class 'A' Office Specifications</b>	
LEED	Certified Gold
Suite Sizes	Up to 126,500 SF
Elevator	Yes
Office	Built to suit
Parking	5 spaces per 1,000 SF
HVAC	Gas, VAV with zone control
Zoning	W1
<b>First Floor Retail</b>	
Suite 135	The Big Bean 1,762 SF



For more information on 231 Najoles Road, visit: [sjpi.com/i97](http://sjpi.com/i97)

# Contact Us

For additional leasing information or to schedule a tour, contact:

**OFFICE SPACE:**

**Michael Tait**  
Leasing Representative  
mtait@sjpi.com  
443.464.1315

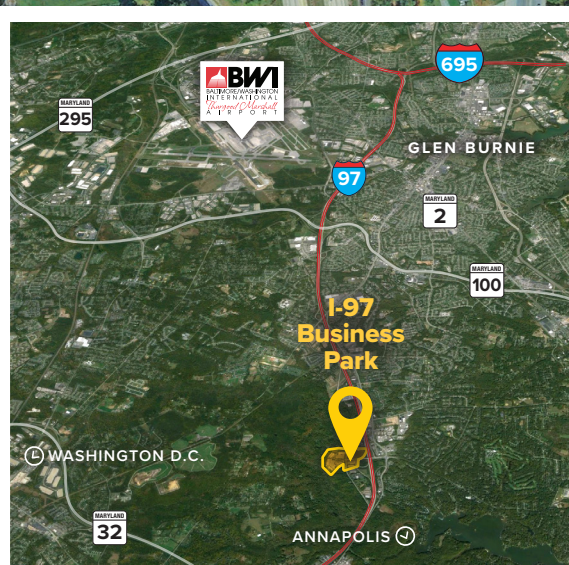
**RETAIL SPACE:**

**Eric Llewellyn**  
Retail Leasing Representative  
ellewellyn@sjpi.com  
443.464.1308

**Corporate Headquarters:**

2560 Lord Baltimore Drive | Baltimore, MD 21244

**410.788.0100 | SJPI.COM**



**Demographics**

	1 Mile	3 Miles	5 Miles
Population	3,844	50,506	130,962
Avg. Household Income	\$269,909	\$150,456	\$142,146



*This information contained in this publication has been obtained from sources believed to be reliable. St. John Properties makes no guarantee, warranty or representation about this information. Any projections, opinions, assumptions or estimates used here are for example only and do not represent the current or future performance of the property. Interested parties should conduct an independent investigation to determine whether the property suits their needs. REV 08/24*