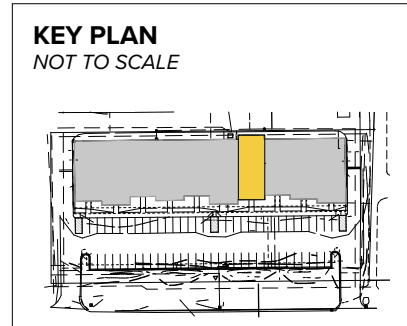
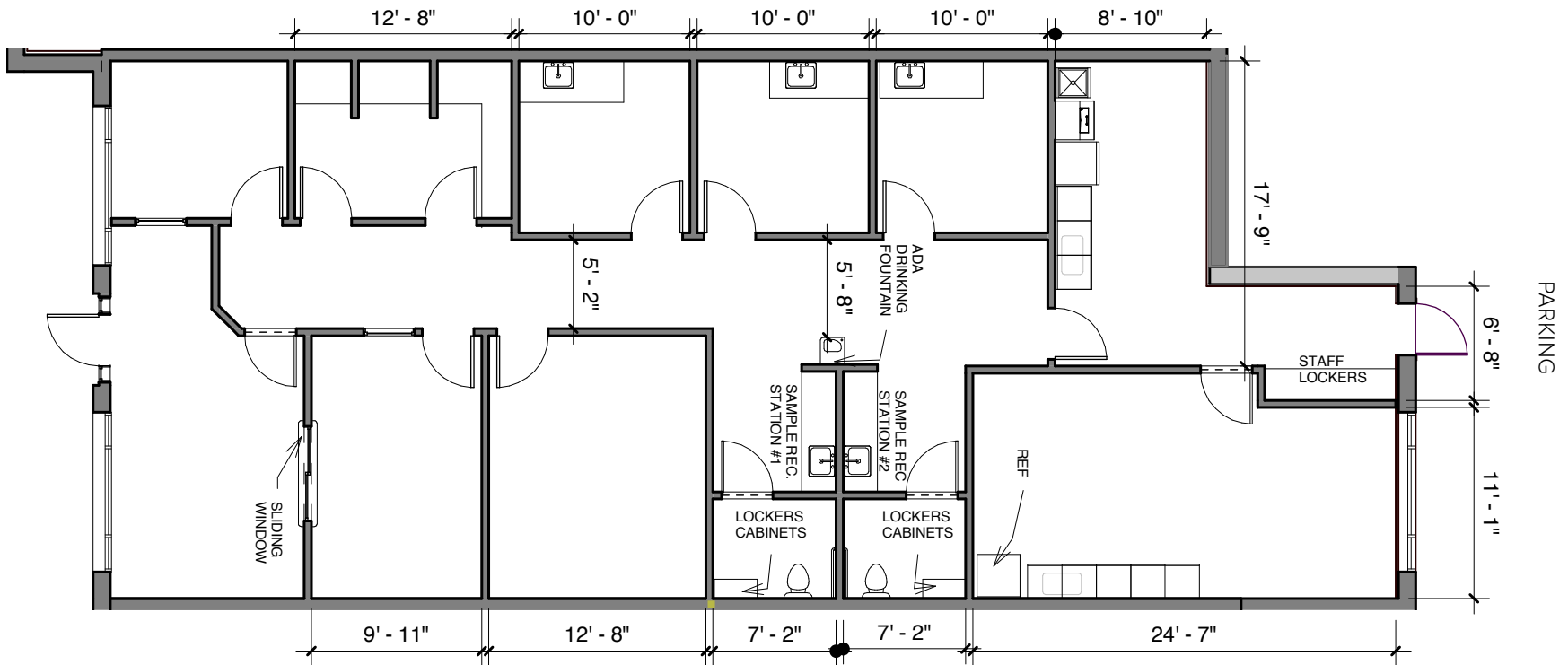




**Total SF Available:**  
2,347 SF



*Note: This space plan is subject to existing field conditions. This drawing is proprietary and the exclusive property of St. John Properties, Inc. Any duplications, distribution, or other unauthorized use is strictly prohibited.*





NEW ROOF | NEW PARKING LOT | NEW HVAC UNITS

# 4125 North 124<sup>th</sup> Street

Brookfield, WI 53005

## About the Property

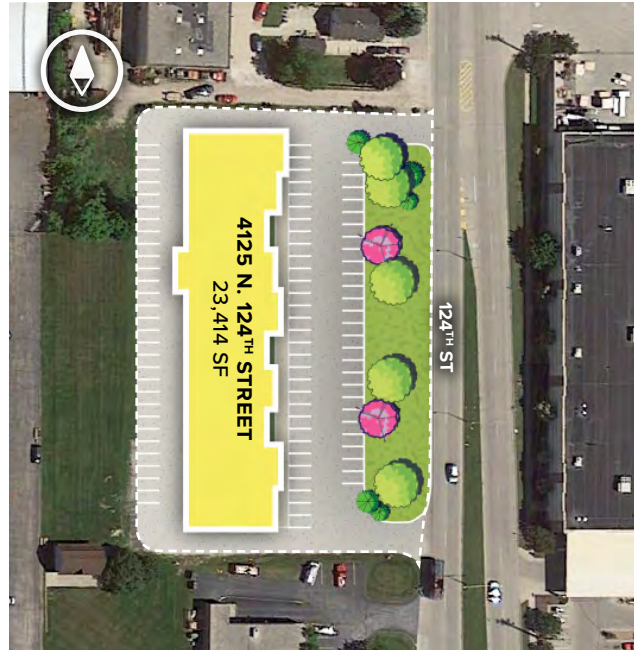
4125 N. 124<sup>th</sup> Street is a high image flex/office building with excellent visibility along 124th Street. The location provides easy access to I-45 with close proximity to retail amenities. Drive-in doors are available, and St. John Properties will remodel to suit your needs.

### Flex/R&D/Office Building

4125 N. 124<sup>th</sup> Street      23,414 SF

### Flex/R&D/Office Specifications

Ceiling Height	14 ft. clear minimum
Parking	4 spaces per 1,000 SF
Heat	Natural Gas
Roof	New EPDM rubber
Exterior Walls	Masonry
Loading	Drive-in
Zoning	I - Industrial



**ST. JOHN**  
PROPERTIES

Placing Our Clients' Needs First Since 1971

[SJPI.COM/WISCONSIN](http://SJPI.COM/WISCONSIN) | 262.524.0100

**NAIOP**  
COMMERCIAL REAL ESTATE  
DEVELOPMENT ASSOCIATION  
**NATIONAL  
DEVELOPER  
OF THE YEAR**  
— 2018 —



For more information on 4125 North 124<sup>th</sup> Street, visit: [sjpi.com/124street](http://sjpi.com/124street)



# Contact Us

For additional leasing information or to schedule a tour, contact:

**Greg Fax**  
 Regional Partner, Wisconsin  
[gfax@sjpi.com](mailto:gfax@sjpi.com) | 262.524.0100

**Wisconsin Regional Office:**  
 2000 Pewaukee Road | Suite A  
 Waukesha, WI 53188

**262.524.0100**  
**[SJPI.COM/WISCONSIN](http://SJPI.COM/WISCONSIN)**



*This information contained in this publication has been obtained from sources believed to be reliable. St. John Properties makes no guarantee, warranty or representation about this information. Any projections, opinions, assumptions or estimates used here are for example only and do not represent the current or future performance of the property. Interested parties should conduct an independent investigation to determine whether the property suits their needs. REV 05/22*

## About St. John Properties

St. John Properties Wisconsin owns and is developing more than 1.7 million square feet of commercial space across 16 business communities in Wisconsin.

St. John Properties, Inc. is a full-service real estate company headquartered in Baltimore, Maryland. The company owns, manages and has developed more than 22 million square feet of commercial real estate nationwide.

Connect with us [@stjohnprop](https://twitter.com/stjohnprop)

