

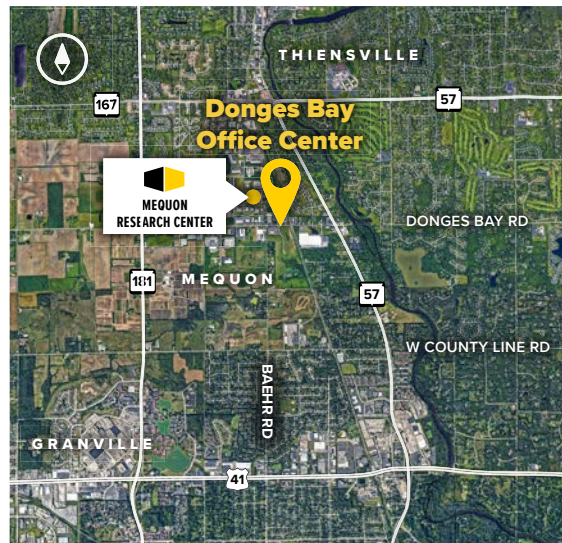


Donges Bay Office Center

10375 N Baldev Court
Mequon, WI 53092

About the Property

Donges Bay Office Center is located near the intersection of Highway 57 (Green Bay Road) and Mequon Road, five minutes west of I-43 and 10 minutes east of Highway 41/45. The south Ozaukee County business community includes 35,654 square feet of Class 'B' office space.



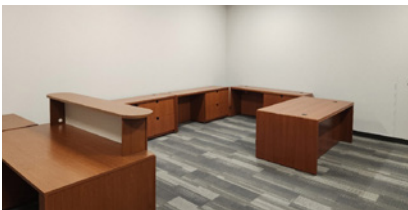
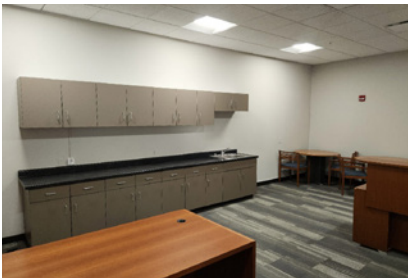
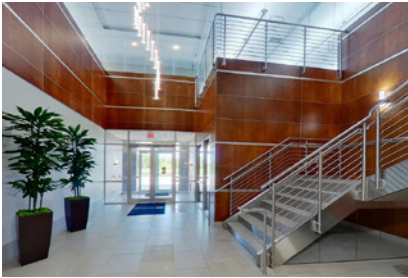
Class 'B' Office Building

10375 N Baldev Court 35,654 SF

Building Specifications

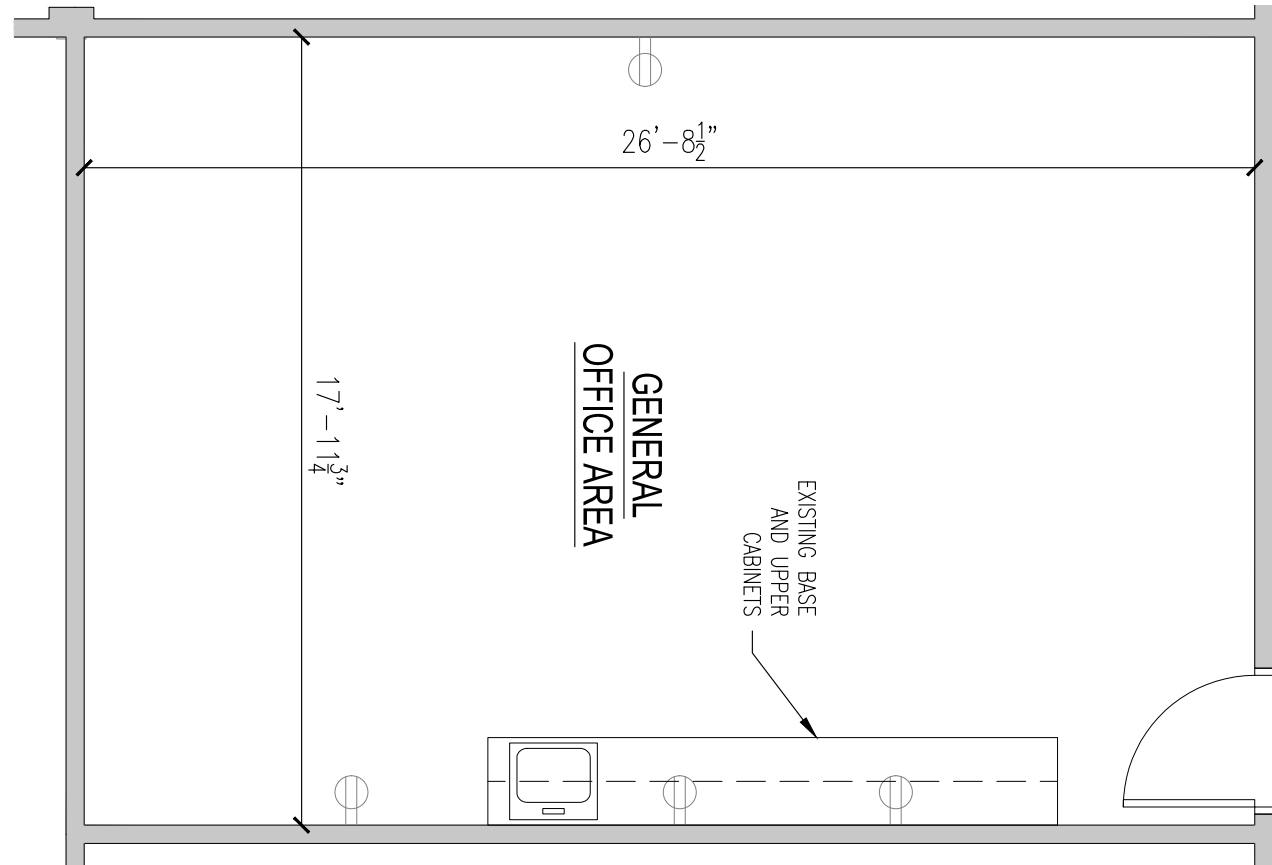
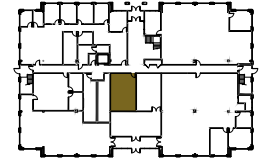
Ceiling Height	9.6 ft. clear minimum
Parking	5.8 spaces/1,000 SF
Interior	Newly renovated
Zoning	B-5

For more information on Donges Bay Office Center, visit: sjpi.com/dongesoffice



Total SF Available: 556 SF
First floor, newly renovated common areas, efficient open office area with existing mill work

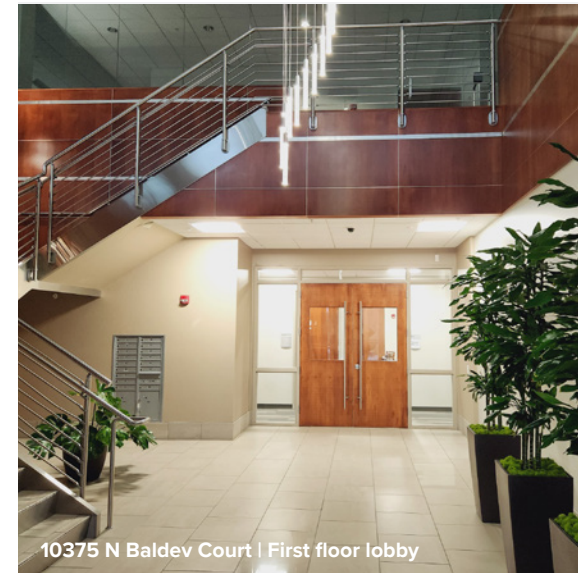
KEY PLAN
NOT TO SCALE



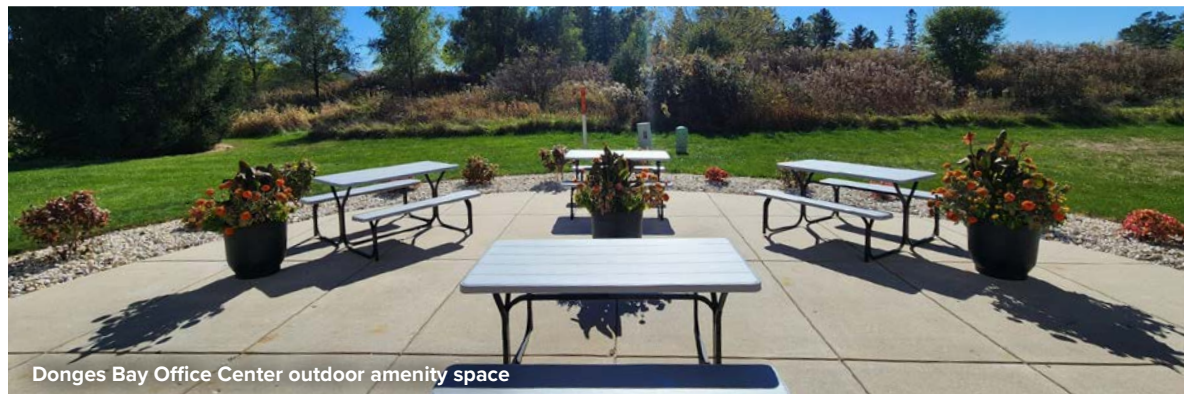
Availabilities

Office Space Available at Donges Bay Office Center

556 sq. ft.	10375 N Baldev Court	Ste. F	First floor, newly renovated common areas, efficient open office area with existing mill work
1,270 sq. ft.	10375 N Baldev Court	Ste. E	First floor, newly renovated common areas, separate office areas with existing mill work
1,404 sq. ft.	10375 N Baldev Court	Ste. A	Efficient first floor office space with general open area, 2 private offices, and conference room; newly renovated common areas
1,519–15,921 sq. ft.	10375 N Baldev Court	Ste. K-R	Full floor opportunity, great glass line with newly renovated common areas
3,205 sq. ft.	10375 N Baldev Court	Ste. G	First floor office with large open area and 2 private offices
3,878 sq. ft.	10375 N Baldev Court	Ste. C-D	First floor, newly renovated common areas, mix of open and private office area



10375 N Baldev Court | First floor lobby



Donges Bay Office Center outdoor amenity space



13075 N Baldev Court | First floor lobby

Contact Us

Gregory Fax

Regional Partner, Wisconsin

GFax@sjpi.com | 262.524.0100

Wisconsin Regional Office:

2000 Pewaukee Road | Suite A

Waukesha, WI 53188



262.524.0100 | SJPI.COM/WISCONSIN

This information contained in this publication has been obtained from sources believed to be reliable. St. John Properties makes no guarantee, warranty or representation about this information. Any projections, opinions, assumptions or estimates used here are for example only and do not represent the current or future performance of the property. Interested parties should conduct an independent investigation to determine whether the property suits their needs. REV 12/24