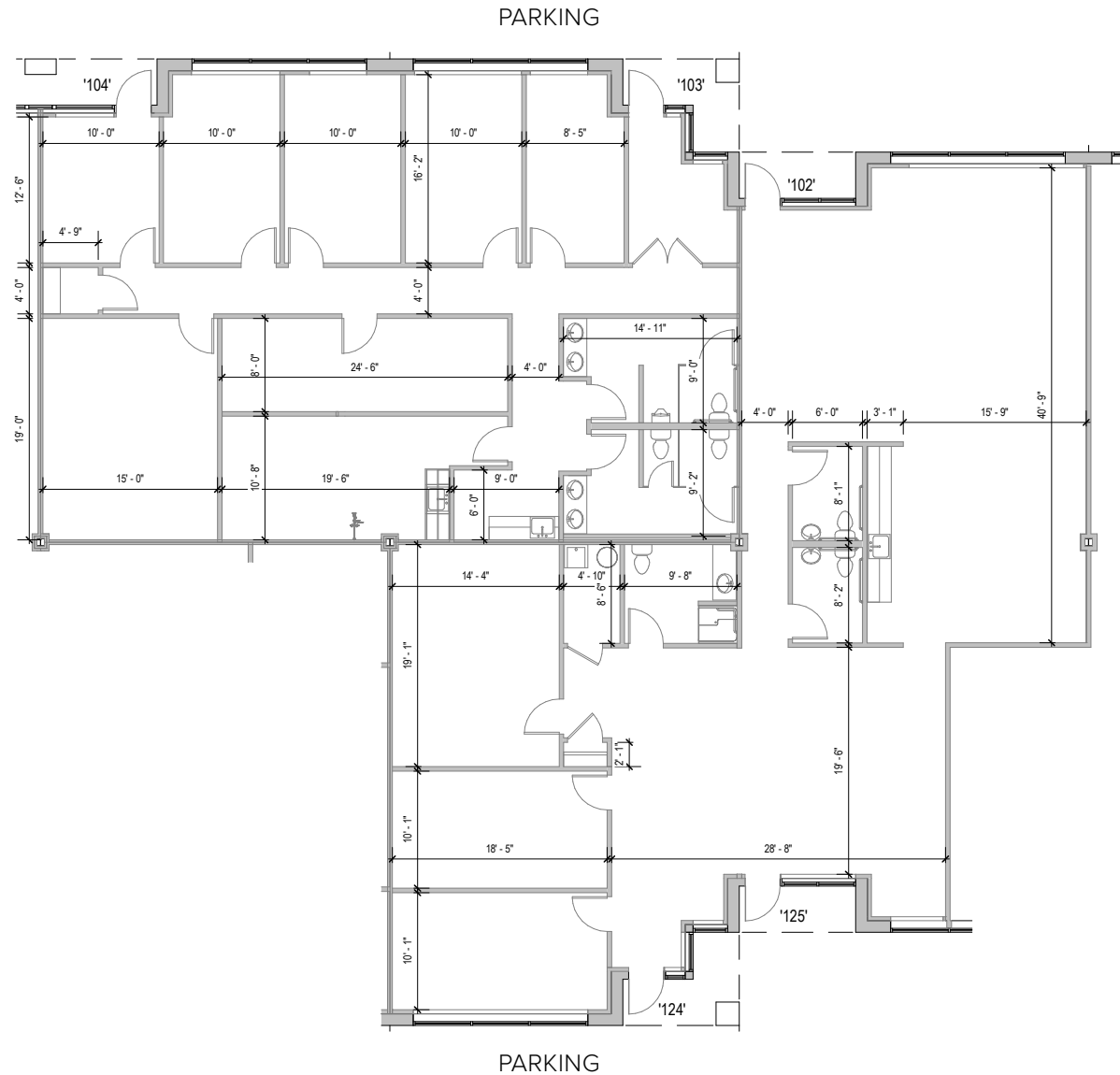
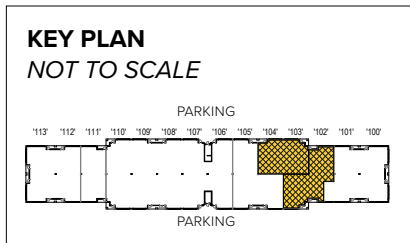




**Total SF Available:**  
5,447 SF

100% office space with mix of private offices, open office space, large kitchenette, and conference rooms



**Note:** This space plan is subject to existing field conditions. This drawing is proprietary and the exclusive property of St. John Properties, Inc. Any duplications, distribution, or other unauthorized use is strictly prohibited.



## Single-Story Office

### Direct-Entry Office

Single-story office buildings at Cromwell Business Park offer direct-entry suites with 24/7 tenant access. Suites feature 9.5 foot ceiling heights with free, on-site parking at a ratio of 5 spaces per 1,000 square feet.

#### Single-Story Office Buildings

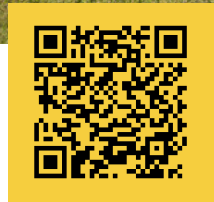
801 Cromwell Park Drive	32,650 SF
802 Cromwell Park Drive	30,000 SF
811 Cromwell Park Drive	31,980 SF

#### Single-Story Office Specifications

Suite Sizes	1,005 up to 32,650 SF
Parking	5 spaces per 1,000 SF
Construction	Brick on block
Zoning	C2

For more information on Cromwell Business Park, visit: [sjpi.com/cromwell](http://sjpi.com/cromwell)





Scan with your mobile device to take a virtual tour, download floor plans and more!

# Contact Us

For additional information or to schedule a tour, contact:

## FLEX/R&D AND OFFICE SPACE:

**DJ Andrew**  
Partner in Training  
dandrew@sjpi.com  
410.369.1222

**Lacey Johansson**  
Assistant Vice President, Leasing  
ljohansson@sjpi.com  
410.369.1229

## RETAIL SPACE:

**Eric Llewellyn**  
Senior Retail Leasing  
Representative  
ellewellyn@sjpi.com  
443.464.1308

**Bill Holzman**  
Vice President, Retail Leasing  
bholzman@sjpi.com  
410.369.1240

**Corporate Headquarters:**  
2560 Lord Baltimore Drive, Baltimore, MD 21244  
**410.788.0100 | SJPI.COM**

## About St. John Properties

St. John Properties, Inc. is one of the nation's largest and most successful privately held commercial real estate firms. Founded in 1971, the vertically-integrated company develops, owns and manages office, flex/research and development, warehouse, retail and residential space nationwide.

Connect with us @stjohnprop



*This information contained in this publication has been obtained from sources believed to be reliable. St. John Properties makes no guarantee, warranty or representation about this information. Any projections, opinions, assumptions or estimates used here are for example only and do not represent the current or future performance of the property. Interested parties should conduct an independent investigation to determine whether the property suits their needs. REV 08/24*