



# Calfield Business Center

**16960–17110 W Greenfield Avenue**  
Brookfield, WI 53005



## About the Property

Calfield Business Center is comprised of three office/retail buildings totaling 49,526 square feet of space and is located along the Interstate 94 corridor in Waukesha County. The property is located just minutes from Waukesha County Airport, the Waukesha County offices, and the Interstate 94 and Highway 164 interchange.



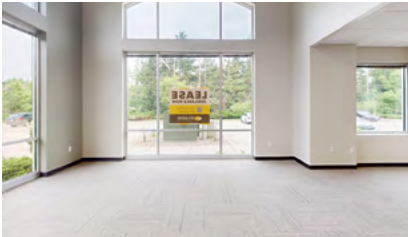
### Office/Retail Buildings

17110 W Greenfield Avenue	17,211 SF
17040 W Greenfield Avenue	15,104 SF
16960 W Greenfield Avenue	17,211 SF

### Building Specifications

Ceiling Height	12 ft. clear minimum
Parking	5.9 spaces/1,000 SF
Construction	Masonry
Zoning	B-1

For more information on Calfield Business Center, visit: [sjpi.com/calfield](https://sjpi.com/calfield)

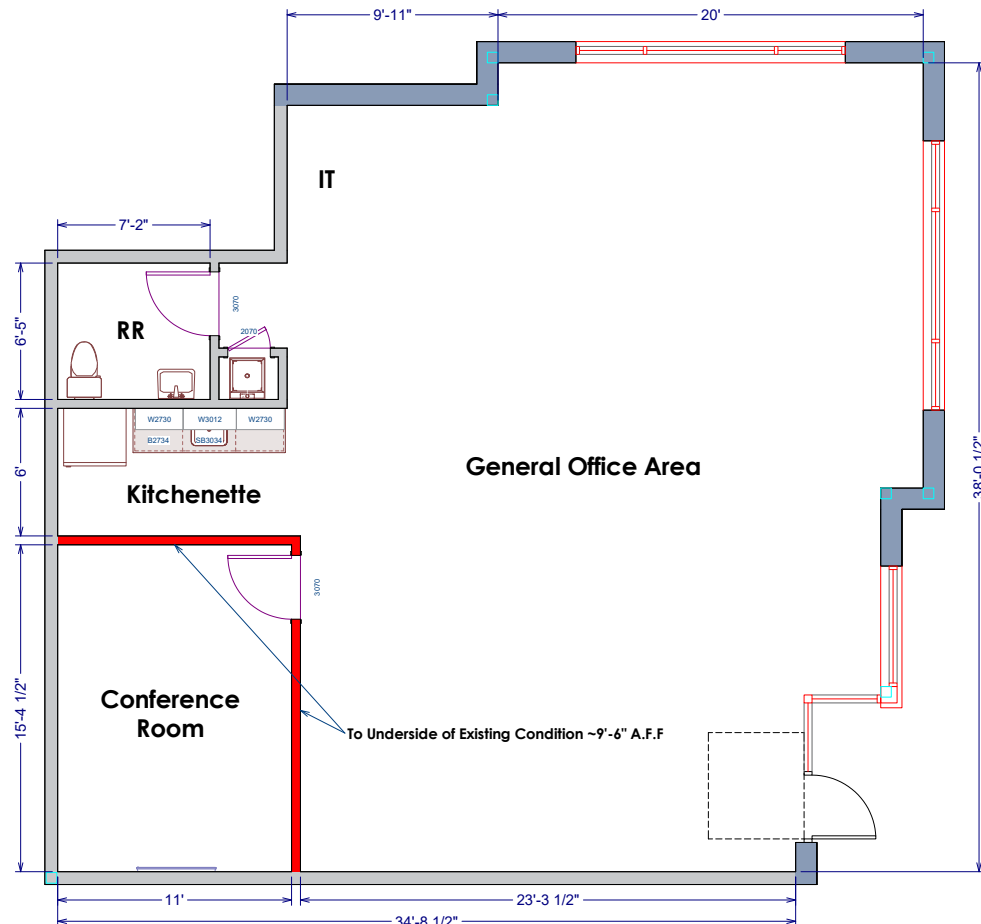


**Note:** This space plan is subject to existing field conditions. This drawing is proprietary and the exclusive property of St. John Properties, Inc. Any duplications, distribution, or other unauthorized use is strictly prohibited.

**Total SF Available:**  
1,490 SF

*End unit with conference room,  
kitchenette, and private restroom*

**CLICK TO VIEW  
VIRTUAL TOUR**



## Availabilities

### Office/Retail Space at Calfield Business Center

1,490 sq. ft.	16960 W Greenfield Ave	Suite 12	End unit with conference room, kitchenette, and private restroom
---------------	------------------------	----------	--

## Contact Us

### Gregory Fax

*Regional Partner, Wisconsin*

GFax@sjpi.com | 262.524.0100

### Wisconsin Regional Office:

2000 Pewaukee Road | Suite A

Waukesha, WI 53188



262.524.0100 | [SJPI.COM/WISCONSIN](http://SJPI.COM/WISCONSIN)



This information contained in this publication has been obtained from sources believed to be reliable. St. John Properties makes no guarantee, warranty or representation about this information. Any projections, opinions, assumptions or estimates used here are for example only and do not represent the current or future performance of the property. Interested parties should conduct an independent investigation to determine whether the property suits their needs. REV 02/25