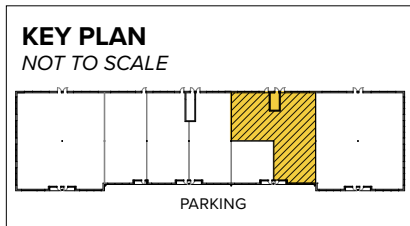


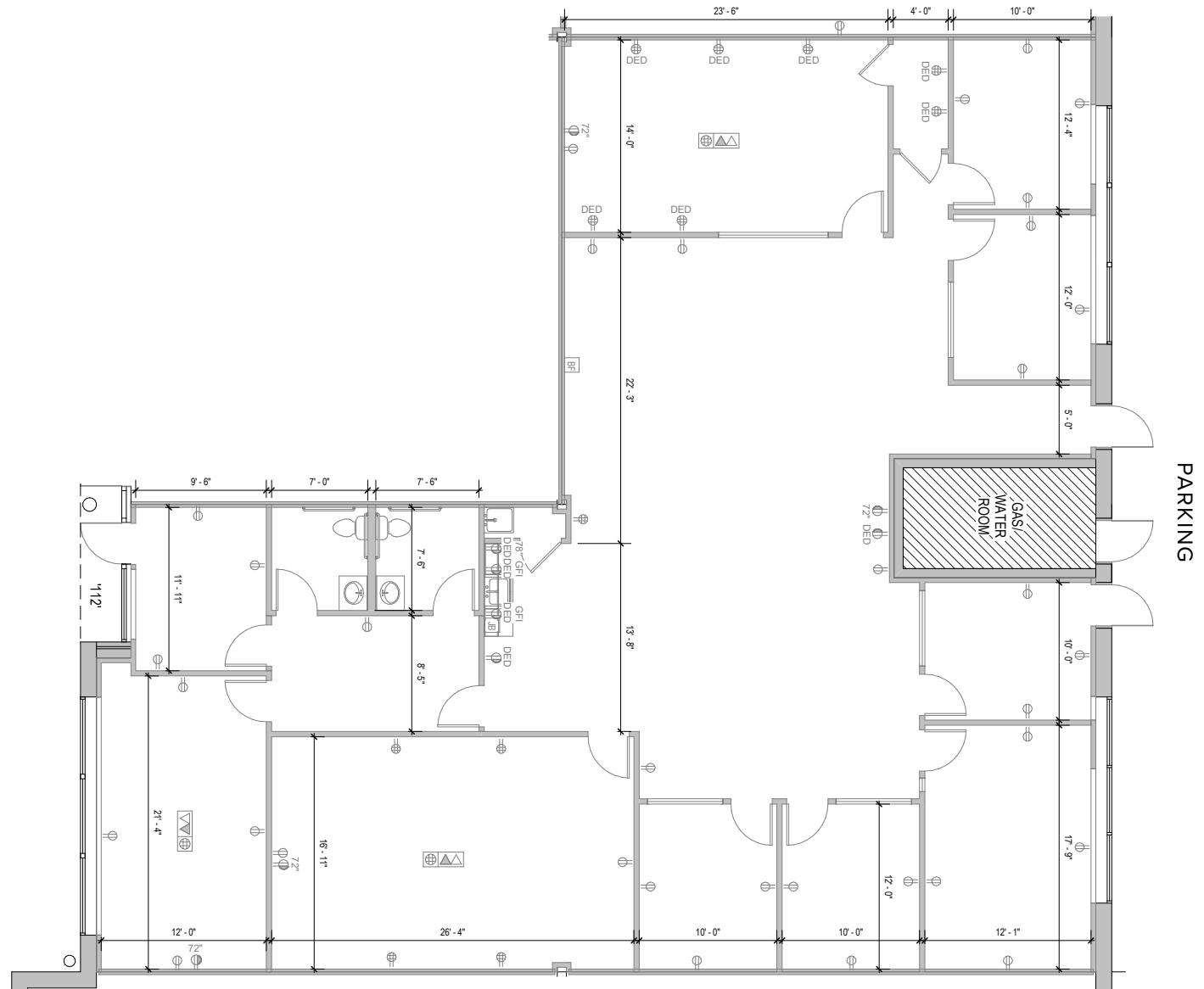


**Total SF Available:**  
3,828 SF

*Office space with individual  
office and collaboration rooms*



**Note:** This space plan is subject to existing field conditions. This drawing is proprietary and the exclusive property of St. John Properties, Inc. Any duplications, distribution, or other unauthorized use is strictly prohibited.



# About Route 100 Tech Park

Route 100 Tech Park is a mixed-use business and retail community located in Anne Arundel County at the intersection of Dorsey Road and Coca Cola Drive in Hanover, Maryland.

The unified architecture of St. John Properties' four buildings, comprising of 125,200 square feet of office, flex/R&D and retail space, provide Route 100 Tech Park a campus-like business environment. Tenant sizes from 2,520 square feet to 48,120 square feet of space offers businesses straight-forward, economical and high-utility space in a covenant-protected, well-maintained atmosphere. Free, generous parking is available.

The retail component of Route 100 Tech Park features 10,776 square feet of space featuring frontage on Dorsey Road.

For more information on Route 100 Tech Park, visit: [sjpi.com/route100](http://sjpi.com/route100)

## Demographics

	1 Mile	3 Miles	5 Miles
Population	3,795	63,891	158,431
Avg. Household Income	\$145,289	\$145,953	\$146,789

## Flex/R&D Buildings

1745 Dorsey Road	48,120 SF	LEED GOLD
------------------	-----------	-----------

1747 Dorsey Road	42,120 SF	LEED GOLD
------------------	-----------	-----------

## Flex/R&D Specifications

LEED	Gold   Core & shell
------	---------------------

Suite Sizes	2,520 up to 48,120 SF
-------------	-----------------------

Ceiling Height	16 ft. clear minimum
----------------	----------------------

Offices	Built to suit
---------	---------------

Parking	4 spaces per 1,000 SF
---------	-----------------------

Heat	Gas
------	-----

Roof	TPO
------	-----

Exterior Walls	Brick on block
----------------	----------------

Loading	Dock or drive-in
---------	------------------

Zoning	W-1
--------	-----

1743 Dorsey Road	24,190 SF	LEED GOLD
------------------	-----------	-----------

## Single-Story Office Specifications

LEED	Gold   Core & shell
------	---------------------

Suite Sizes	2,455 up to 10,989 SF
-------------	-----------------------

Ceiling Height	10 ft. clear minimum
----------------	----------------------

Offices	Built to suit
---------	---------------

Parking	5 spaces per 1,000 SF
---------	-----------------------

Heat	Gas
------	-----

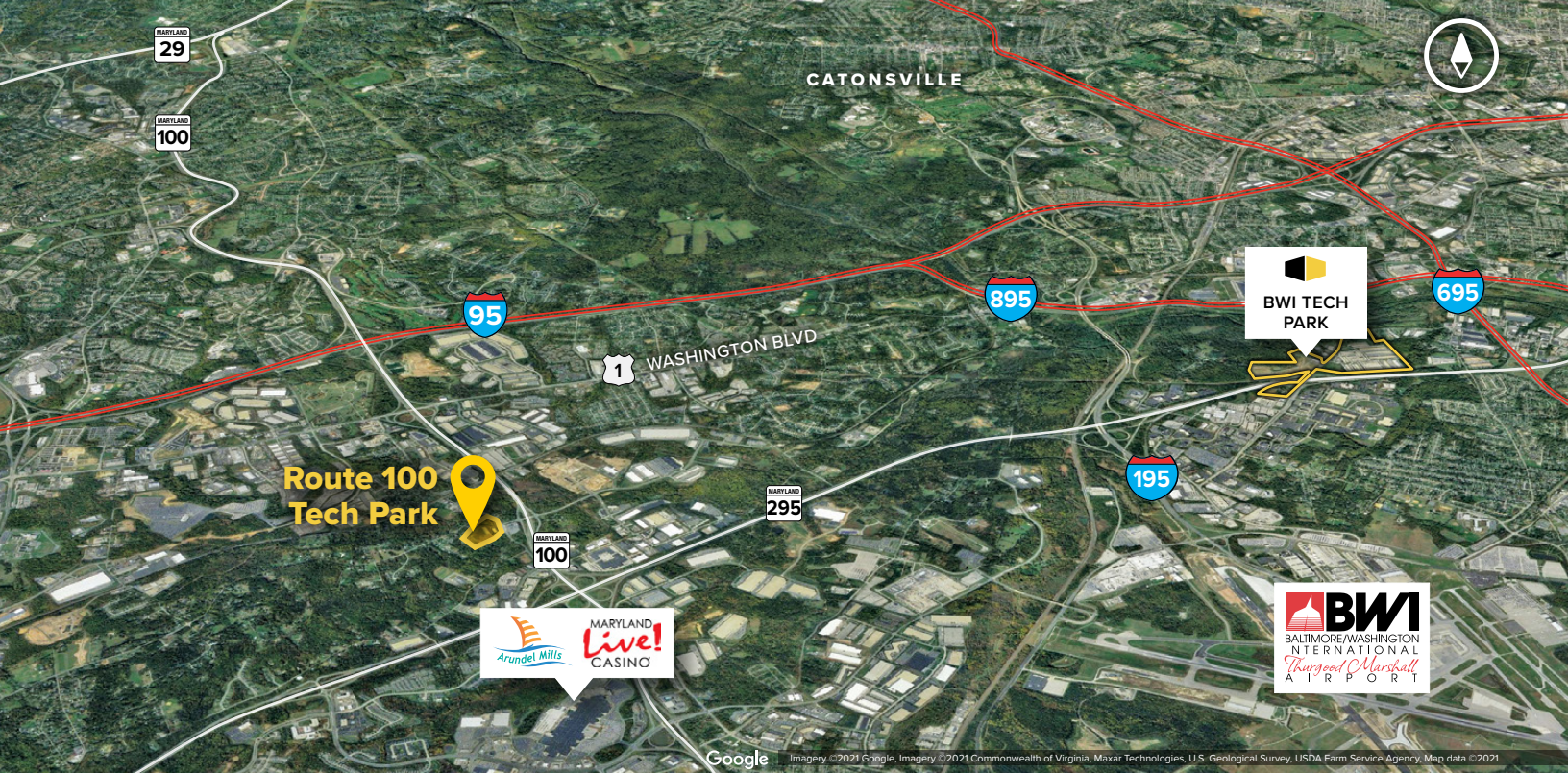
Roof	TPO
------	-----

Exterior Walls	Brick on block
----------------	----------------

Zoning	W-1
--------	-----

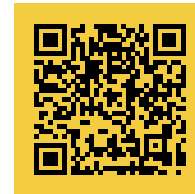
## Retail Building

1741 Dorsey Road	10,776 SF
------------------	-----------



**Distances to:**

Annapolis, MD (Downtown) .....	25 miles
Arundel Mills Mall .....	2 miles
Baltimore, MD (Downtown) .....	12 miles
BWI Airport .....	5 miles
Columbia, MD .....	10 miles
Fort Meade/NSA .....	5 miles
Interstate 95 .....	2 miles
Interstate 97 .....	6 miles
Interstate 695 (Baltimore Beltway) .....	6 miles
MD 295 (Balto.-Wash. Pkwy) .....	0.5 miles
Washington, D.C. (Downtown) .....	28 miles



**Scan with your mobile device to take a virtual tour, download floor plans and more!**

# Contact Us

For additional leasing information or to schedule a tour, contact:

**Lacey Johansson**  
 Assistant Vice President, Leasing  
 ljohansson@sjpi.com | 410.369.1274

**Corporate Headquarters:**  
 2560 Lord Baltimore Drive | Baltimore, MD 21244

**410.788.0100 | SJPI.COM**

**About St. John Properties**

St. John Properties, Inc. is one of the nation's largest and most successful privately held commercial real estate firms. Founded in 1971, the vertically-integrated company develops, owns and manages office, flex/ research and development, warehouse, retail and residential space nationwide.

Connect with us @stjohnprop



*This information contained in this publication has been obtained from sources believed to be reliable. St. John Properties makes no guarantee, warranty or representation about this information. Any projections, opinions, assumptions or estimates used here are for example only and do not represent the current or future performance of the property. Interested parties should conduct an independent investigation to determine whether the property suits their needs. REV 12/23*