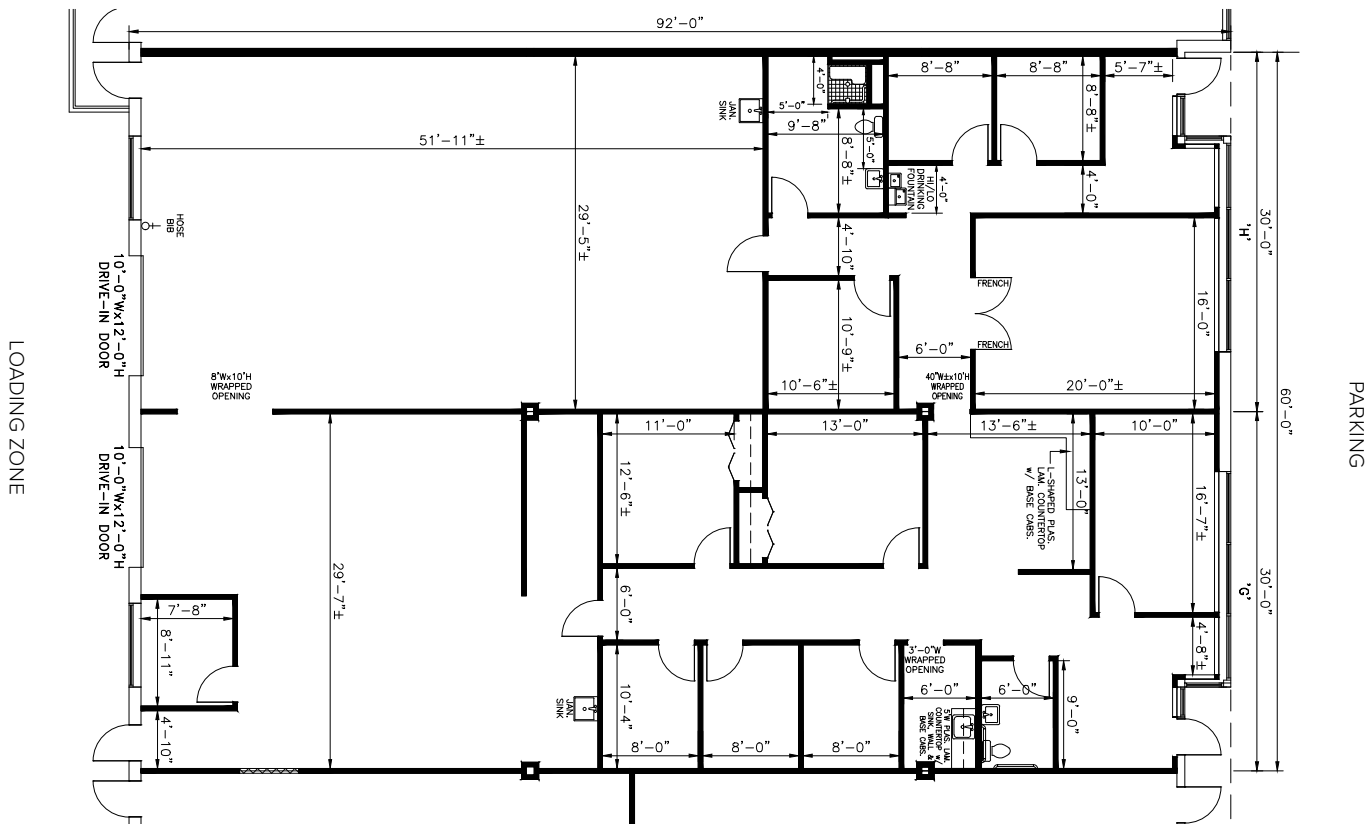




**Total SF Available:**  
5,520 SF

2,775 sq. ft. office, 2,745  
sq. ft. warehouse with  
10'x12' drive-in doors (2)

*Note: This space plan is subject to existing field conditions. This drawing is proprietary and the exclusive property of St. John Properties, Inc. Any duplications, distribution, or other unauthorized use is strictly prohibited.*



## About Riverside Tech Park

Riverside Tech Park is a 70-acre business community comprising of 14 buildings totaling 753,560 square feet of space in an attractive and professional corporate environment. The park is ideally situated along the main entrance to the National Cancer Institutes's (NCI's) 330,000 square foot state-of-the-art R&D facility, home to the Advanced Technology Partnerships Initiative (ATPI). NCI's facility is the nation's only federally funded R&D center dedicated solely to biomedical research and development. Additionally, Riverside provides exceptional access to local dining, shopping, and service amenities.

The buildings in Riverside Tech Park are high-utility, economical, and efficient, offering unmatched flexibility to provide a custom-tailored facility for our tenants' specific requirements, including office, laboratories, retail, and storage uses. The single-story buildings feature expansive 30 ft. by 30 ft. column spacing, 16-18 ft. clear heights, high voltage electric service, impressive drive-in and dock loading facilities, and flexibility for unlimited space configuration options.



For more information on Riverside Tech Park, visit: [sjpi.com/riversidetech](http://sjpi.com/riversidetech)

### Flex/R&D Buildings

1750 Monocacy Boulevard	38,080 SF
8400 Spires Way	16,200 SF
8411 Broadband Drive	32,560 SF
8415 Progress Drive	66,240 SF
8420 Gas House Pike	93,360 SF
8421 Broadband Drive	40,120 SF
8425 Precision Way	75,240 SF
8430 Spires Way	87,240 SF
8431 Broadband Drive	35,840 SF
8435 Progress Drive	84,240 SF
8445 Spires Way	81,240 SF
8440 Broadband Drive	52,080 SF
8450 Broadband Drive	51,120 SF

### Flex/R&D Specifications

Suite Sizes	2,760 up to 93,360 SF
Ceiling Height	16-18 ft. clear minimum
Loading	Dock or drive-in
Roof	TPO & EPDM Rubber
Construction	Brick on block
Parking	4 spaces per 1,000 SF
Heat	Gas
Zoning	GC, M1, MO

### Retail Tenants

#### 1708 Monocacy Boulevard

Royal Farms	5,371 SF
-------------	----------





**Distances to:**

BWI Airport .....	50 miles
Dulles International Airport .....	44 miles
Fort Detrick .....	3 miles
Frederick International Airport .....	3 miles
Interstate 70 .....	2 miles
Interstate 270 .....	3 miles
Route 15/340 .....	2 miles
Route 26 .....	1 mile



Scan with your mobile device to take a virtual tour, download floor plans and more!

# Contact Us

For additional leasing information or to schedule a tour, contact:

**Danny Foit**  
 Leasing Representative  
 dfoit@sjpi.com  
 240.931.0811

**Matthew Holbrook**  
 Regional Partner, Virginia & Central Maryland  
 mholbrook@sjpi.com  
 301.682.9215

**Central Maryland Regional Office:**  
 5104 Pegasus Court | Suite A  
 Frederick, Maryland 21704

**301.682.9215 | SJPI.COM/CENTRALMD**

**About St. John Properties**

St. John Properties, Inc. is one of the nation's largest and most successful privately held commercial real estate firms. Founded in 1971, the vertically-integrated company develops, owns and manages office, flex/ research and development, warehouse, retail and residential space nationwide.

St. John Properties' Virginia and Central Maryland regional office has developed and owns more than 4.2 million square feet of commercial space in Frederick County, Maryland as well as Loudoun and Prince William Counties in Virginia.



*This information contained in this publication has been obtained from sources believed to be reliable. St. John Properties makes no guarantee, warranty or representation about this information. Any projections, opinions, assumptions or estimates used here are for example only and do not represent the current or future performance of the property. Interested parties should conduct an independent investigation to determine whether the property suits their needs. REV 07/23*