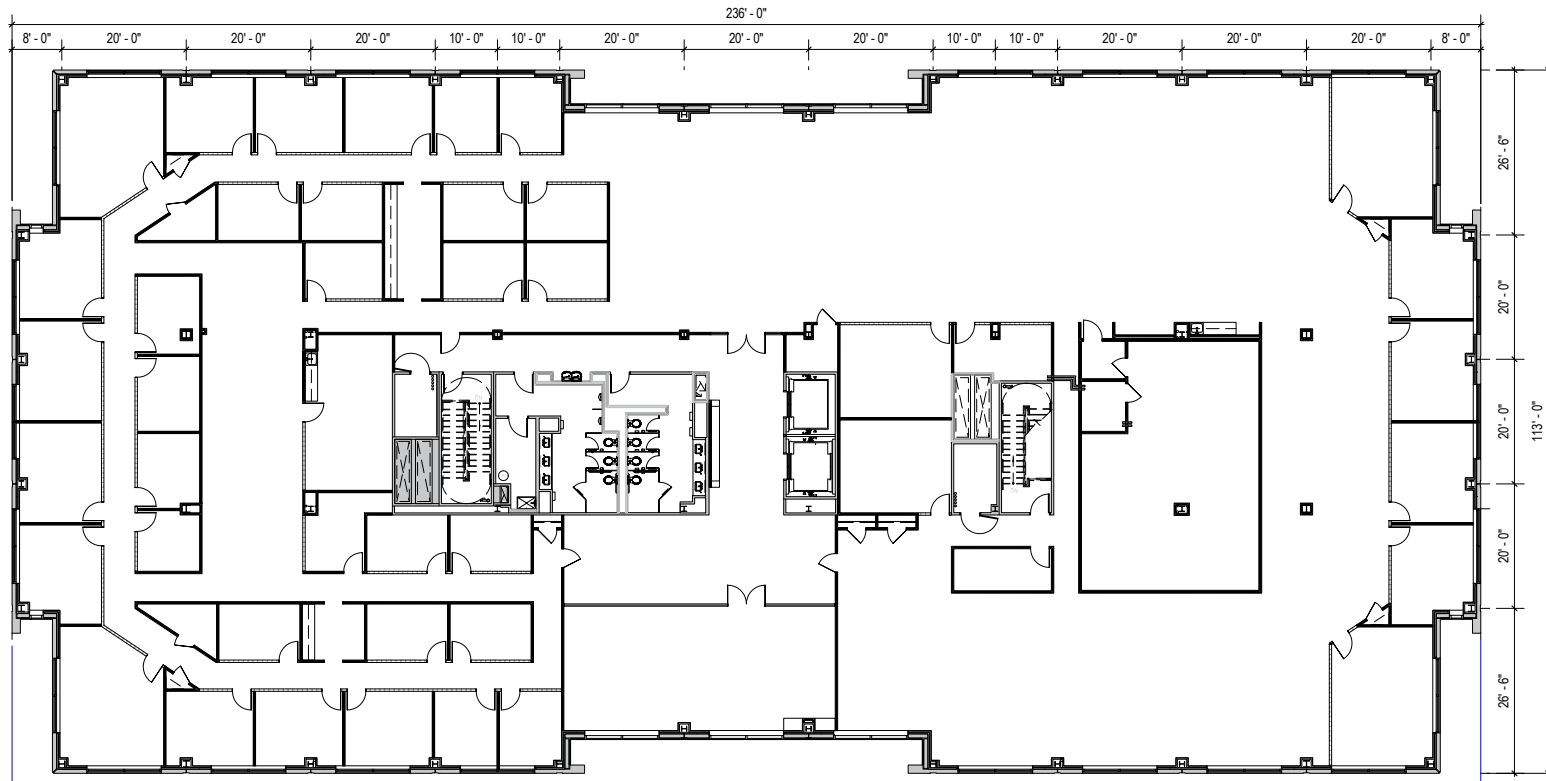




Total SF Available:
26,472 SF

Full floor availability

**CLICK TO VIEW
VIRTUAL TOUR**





- ▶ Seven three-story, Class 'A' office buildings
- ▶ Abundant free surface parking
- ▶ Sleek and modern Class 'A' lobbies
- ▶ Glass and brick exteriors constructed to Anti-Terrorism-Force-Protection (ATFP) Standards
- ▶ Virtually column-free construction floor-plates

Three-Story Office Building

| | | |
|-----------------------|-----------|---------------|
| 6190 Guardian Gateway | 75,000 SF | LEED SILVER |
| 6200 Guardian Gateway | 75,000 SF | LEED SILVER |
| 6210 Guardian Gateway | 75,000 SF | LEED SILVER |
| 6220 Guardian Gateway | FUTURE | LEED DESIGNED |
| 6230 Guardian Gateway | FUTURE | LEED DESIGNED |
| 6260 Guardian Gateway | 74,321 SF | LEED SILVER |
| 6280 Guardian Gateway | 74,334 SF | LEED SILVER |



Multi-Story Office Specifications

| | |
|----------------|-----------------------|
| LEED | Core & shell |
| Suite Sizes | 1,252 up to 75,000 SF |
| Ceiling Height | 10 ft. clear minimum |
| Parking | 5 spaces per 1,000 SF |
| Exterior | ATFP |
| Elevator | Yes |





Scan with your mobile device to take a virtual tour, download floor plans and more!

Contact Us

For additional leasing information or to schedule a tour, contact:

Michael Tait
Leasing
Representative
mtait@sjpi.com
443.464.1315

Matt Lenihan
Senior Vice President,
Leasing
mlenihan@sjpi.com
410.369.1202

Corporate Headquarters:
2560 Lord Baltimore Drive | Baltimore, MD 21244

410.788.0100 | SJPI.COM



About St. John Properties

St. John Properties, Inc. is one of the nation's largest and most successful privately held commercial real estate firms. Founded in 1971, the vertically-integrated company develops, owns and manages office, flex/research and development, warehouse, retail and residential space nationwide.

Connect with us @stjohnprop

