



410.788.0100 | SJPI.COM

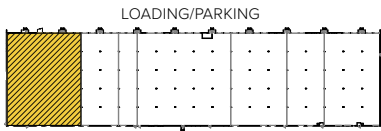
Columbia Center 9520 Gerwig Lane | Columbia, MD 21046 Suites Q-T



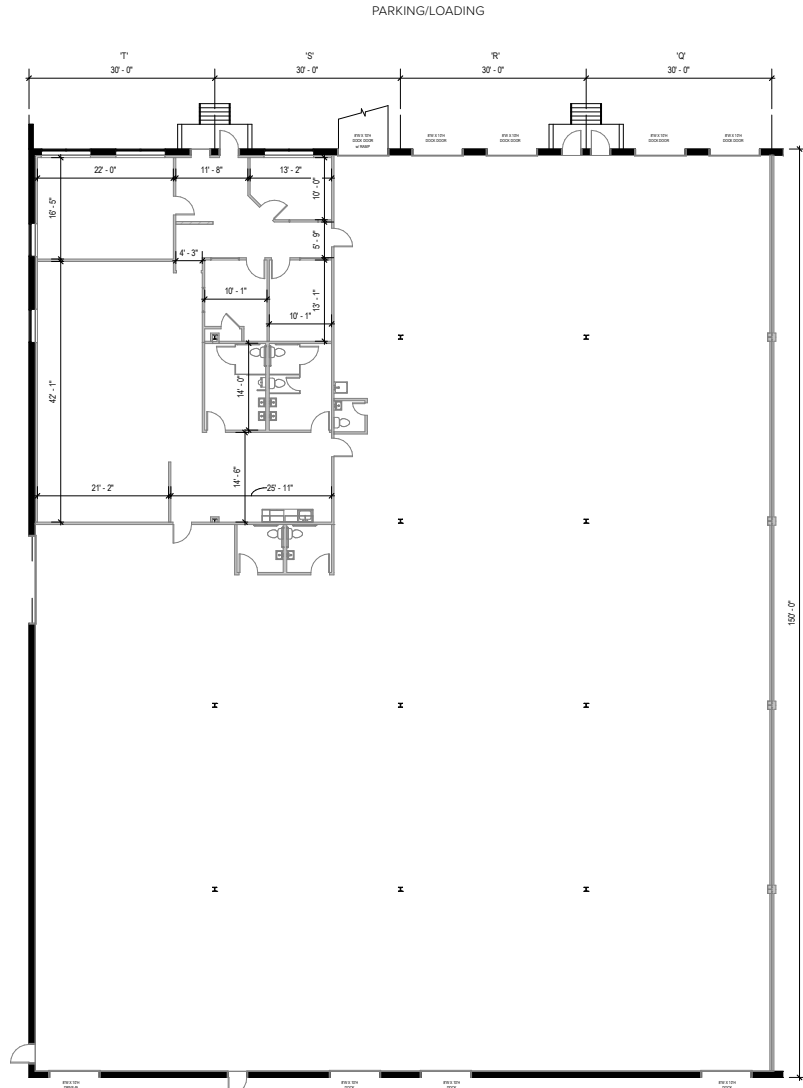
Total SF Available:
18,000 SF

2,879 sq. ft. office, end unit, 4 dock doors and a drive-in door

KEY PLAN
NOT TO SCALE



Note: This space plan is subject to existing field conditions. This drawing is proprietary and the exclusive property of St. John Properties, Inc. Any duplications, distribution, or other unauthorized use is strictly prohibited.



About Columbia Center

Columbia Center is a two-building project offering more than 220,000 square feet of warehouse space in Columbia, MD. The Howard County project is conveniently located near Interstate 95 and MD routes 29 and 32, offering rapid connections to Baltimore, Washington, D.C. and points along the mid-Atlantic corridor.

*Convenient front-loading dock loading
22 ft clear heights for maximum warehouse use.*



Bulk/Warehouse Space

Bulk/Warehouse Building

9520 Gerwig Lane	89,873 SF
9475 Gerwig Lane	130,201 SF

Bulk/Warehouse Specifications

Suite Sizes	3,640 up to 130,201 SF
Ceiling Height	22 ft. clear minimum
Offices	Built to suit
Heat	Natural Gas

Column Span	9520 Gerwig Lane: 30' x 30' 9475 Gerwig Lane: 30' x 33'
-------------	--

Exterior Walls	Brick on block
----------------	----------------

Loading	Dock
---------	------

Zoning	NT (New Town)
--------	---------------

Pictured left: Interior warehouse space with 22 ft. clear height; Pictured bottom: 9520 Gerwig Lane exterior with loading docks

Visit [sjpi.com/columbiacenter](https://www.sjpi.com/columbiacenter) to learn more





Distances to:

Baltimore, MD (Downtown)	17 miles
BWI Airport	12 miles
Columbia, MD (Downtown)	6 miles
Fort Meade	8 miles
MD Route 29	2.5 miles
MD Route 175	2.5 miles
MD Route 295	5 miles
Interstate 95	2 miles
Interstate 695	12 miles
US Route 1	3 miles
Washington, D.C.	26 mile

Contact Us

For additional leasing information or to schedule a tour, contact:

Bill Jautze

Assistant Vice President, Leasing
 bjautze@sjpi.com | 410.369.1213

Corporate Headquarters:

2560 Lord Baltimore Drive | Baltimore, MD 21244

410.788.0100 | SJPI.COM



Scan with your mobile device to take a virtual tour, download floor plans and more!

About St. John Properties

St. John Properties, Inc. is one of the nation's largest and most successful privately held commercial real estate firms. Founded in 1971, the vertically-integrated company develops, owns and manages office, flex/research and development, warehouse, retail and residential space nationwide.

Connect with us @stjohnprop



This information contained in this publication has been obtained from sources believed to be reliable. St. John Properties makes no guarantee, warranty or representation about this information. Any projections, opinions, assumptions or estimates used here are for example only and do not represent the current or future performance of the property. Interested parties should conduct an independent investigation to determine whether the property suits their needs. REV 06/23