



410.788.0100 | SJPI.COM

### Annapolis Corporate Park

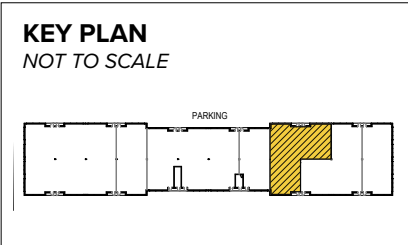
185 Harry S. Truman Parkway | Annapolis, MD 21401

Suites 104-106

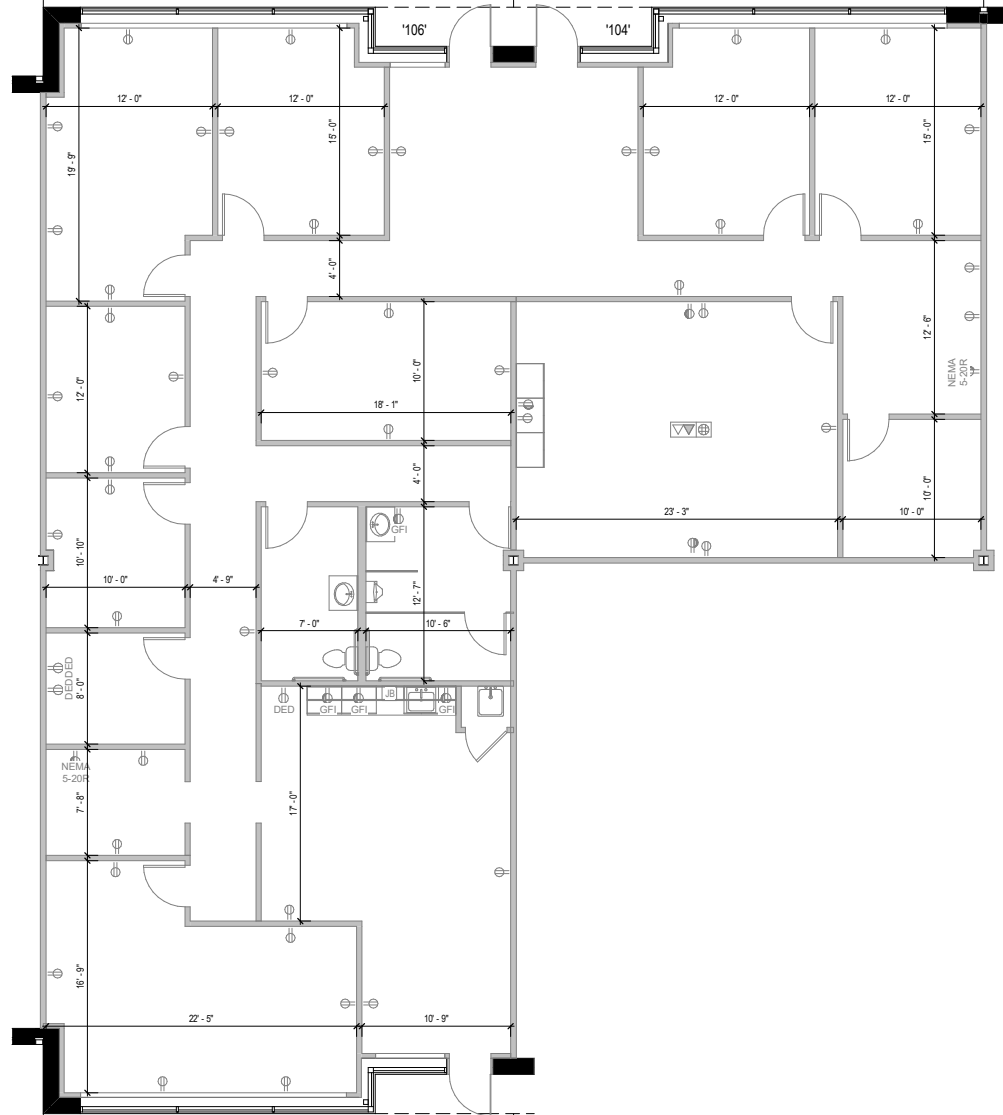


**Total SF Available:**  
4,134 SF

*Multiple private offices with  
large conference room and  
break area*



**Note:** This space plan is subject to existing field conditions. This drawing is proprietary and the exclusive property of St. John Properties, Inc. Any duplications, distribution, or other unauthorized use is strictly prohibited.







**Distances to:**

Annapolis, MD (Downtown) .....	5 miles
Annapolis Towne Centre .....	1.3 miles
Anne Arundel Medical Center .....	2.3 miles
Baltimore, MD (Downtown) .....	27 miles
BWI Airport .....	22 miles
Interstate 95 .....	23 miles
Interstate 97 .....	2.5 miles
Interstate 495 (Capital Beltway) .....	18 miles
Interstate 695 (Baltimore Beltway) .....	20 miles
Washington, D.C. (Downtown) .....	31 miles
Westfield Annapolis Mall .....	1.8 miles

# Contact Us

For additional leasing information or to schedule a tour, contact:

Michael Tait  
 Leasing Representative  
 mtait@sjpi.com | 443.464.1315

Corporate Headquarters:  
 2560 Lord Baltimore Drive | Baltimore, MD 21244  
 410.788.0100 | SJPI.COM



Scan with your mobile device to take a virtual tour, download our plans and more!

### About St. John Properties

St. John Properties, Inc. is one of the nation's largest and most successful privately held commercial real estate firms. Founded in 1971, the vertically-integrated company develops, owns and manages office, flex/research and development, warehouse, retail and residential space nationwide.

Connect with us @stjohnprop



*This information contained in this publication has been obtained from sources believed to be reliable. St. John Properties makes no guarantee, warranty or representation about this information. Any projections, opinions, assumptions or estimates used here are for example only and do not represent the current or future performance of the property. Interested parties should conduct an independent investigation to determine whether the property suits their needs. REV 06/23*