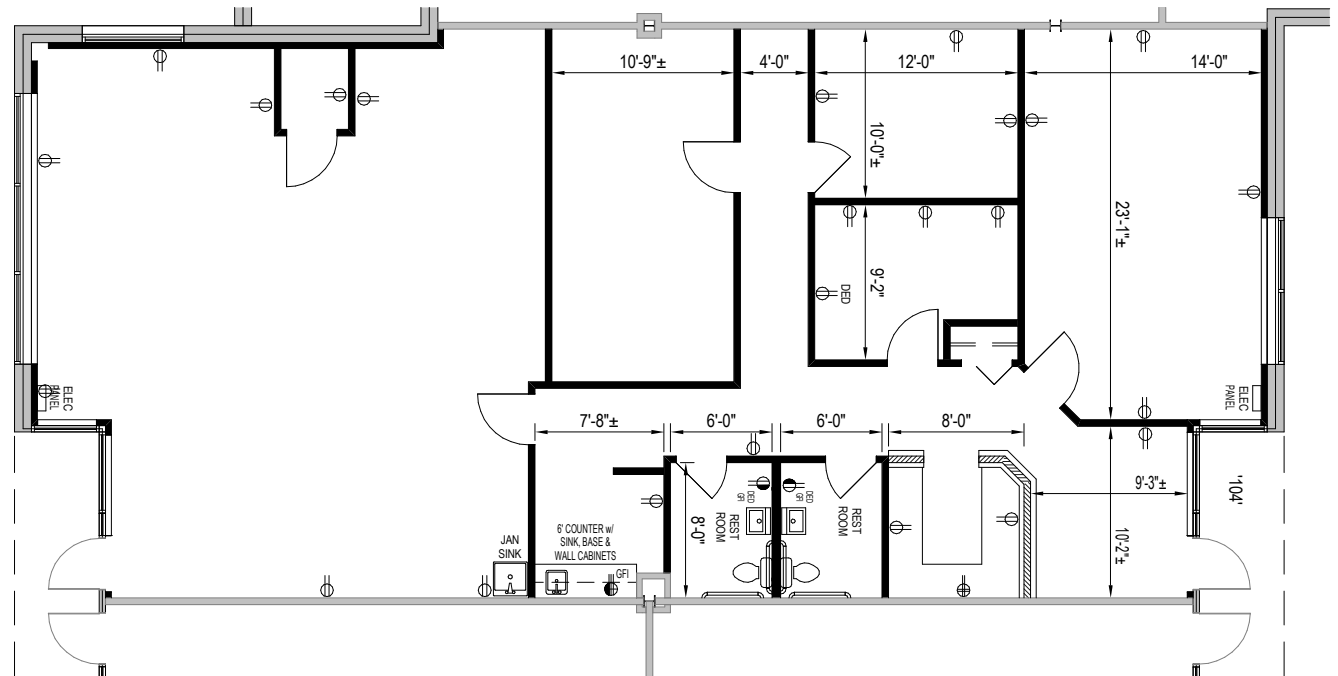
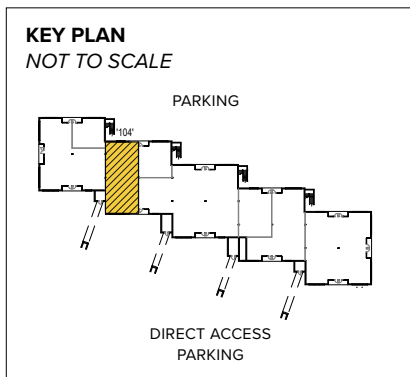




**Total SF Available:**  
2,550 SF

*Built-in reception with private offices and large bullpen*

**CLICK TO VIEW  
VIRTUAL TOUR**



**Note:** This space plan is subject to existing field conditions. This drawing is proprietary and the exclusive property of St. John Properties, Inc. Any duplications, distribution, or other unauthorized use is strictly prohibited.



SPARKS

ASHLAND

W WARREN RD  
YORKRIDGE CENTER NORTH

YORK ROAD



YORK ROAD  
LOVETON BUSINESS PARK

HUNT VALLEY  
M CORMICK RD

LOVETON CIR



SHAWAN ROAD



Distances to:

|  |          |
|--|----------|
| Baltimore, MD (Downtown) .....           | 17 miles |
| BWI Airport .....                        | 27 miles |
| Harrisburg, PA .....                     | 58 miles |
| Interstate 83 .....                      | 3 miles  |
| Interstate 695 (Baltimore Beltway) ..... | 8 miles  |
| Timonium, MD .....                       | 6 miles  |
| Towson, MD .....                         | 9 miles  |
| York, PA .....                           | 33 miles |



Scan with your mobile device to take a virtual tour, download our plans and more!

# Contact Us

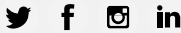
For additional leasing information or to schedule a tour, contact:

Stephanie Caronna  
Leasing Representative  
scaronna@smpi.com | 410.369.1235

Corporate Headquarters:  
2560 Lord Baltimore Drive | Baltimore, MD 21244  
410.788.0100 | SJPI.COM

About St. John Properties  
St. John Properties, Inc. is a full-service real estate company headquartered in Baltimore, Maryland. The company owns, manages and has developed more than 22 million square feet of commercial real estate, including office, ex/R&D, warehouse, retail and residential space.

Connect with us @stjohnprop



This information contained in this publication has been obtained from sources believed to be reliable. St. John Properties makes no guarantee, warranty or representation about this information. Any projections, opinions, assumptions or estimates used here are for example only and do not represent the current or future performance of the property. Interested parties should conduct an independent investigation to determine whether the property suits their needs. REV 11/22