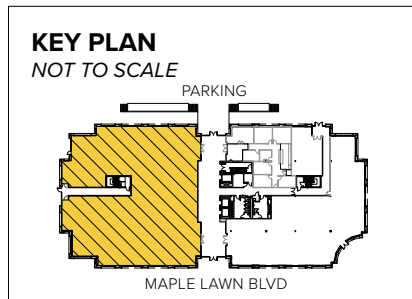




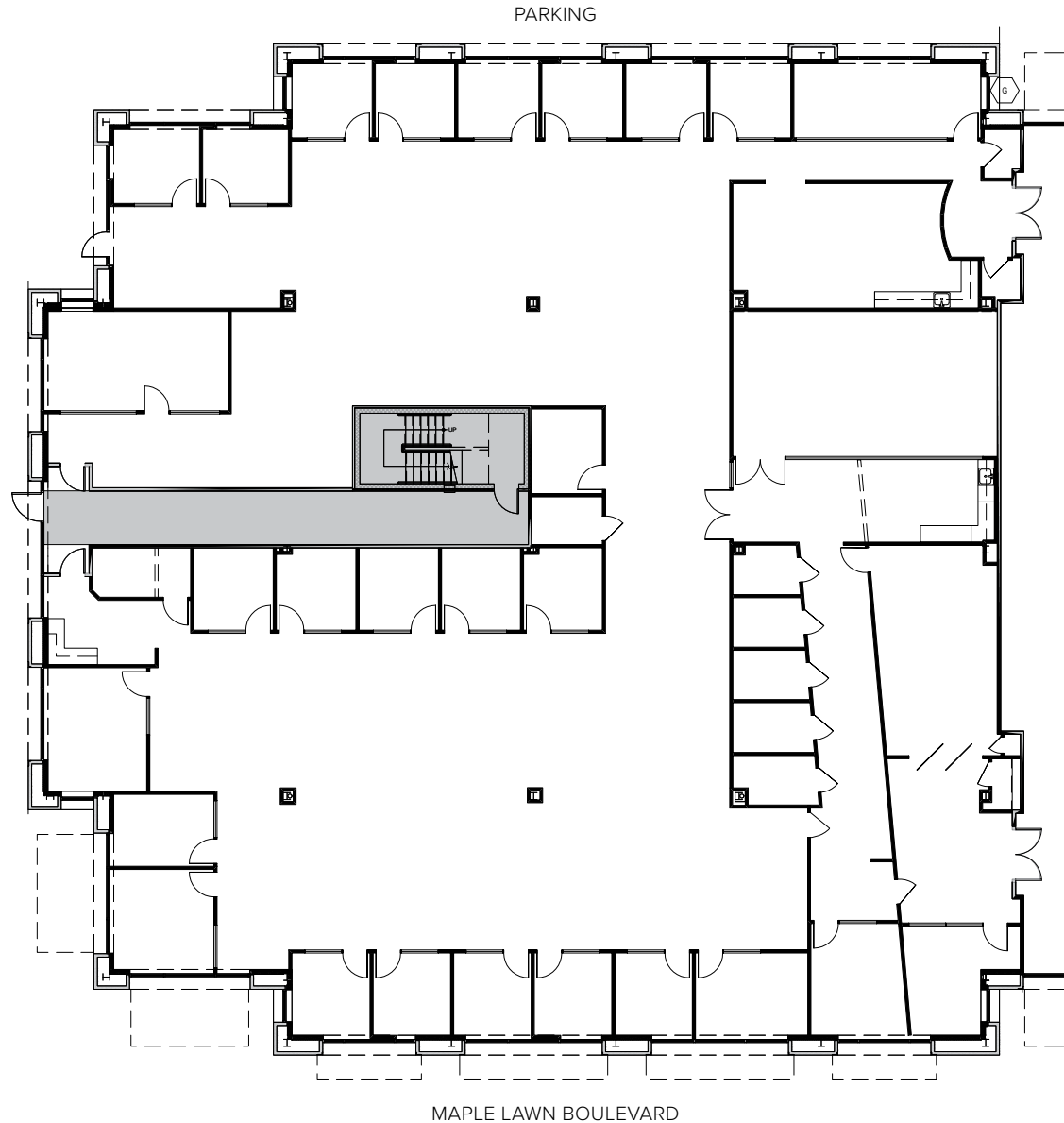
**Total SF Available:**  
14,031 SF

*Upgraded modern office  
with an efficient layout on  
the first floor, off the main  
lobby entrance*

**CLICK TO VIEW  
VIRTUAL TOUR**



**Note:** This space plan is subject to existing field conditions. This drawing is proprietary and the exclusive property of St. John Properties, Inc. Any duplications, distribution, or other unauthorized use is strictly prohibited.



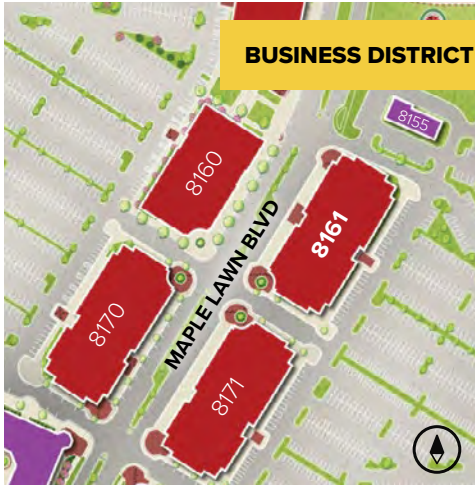


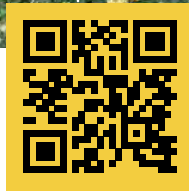
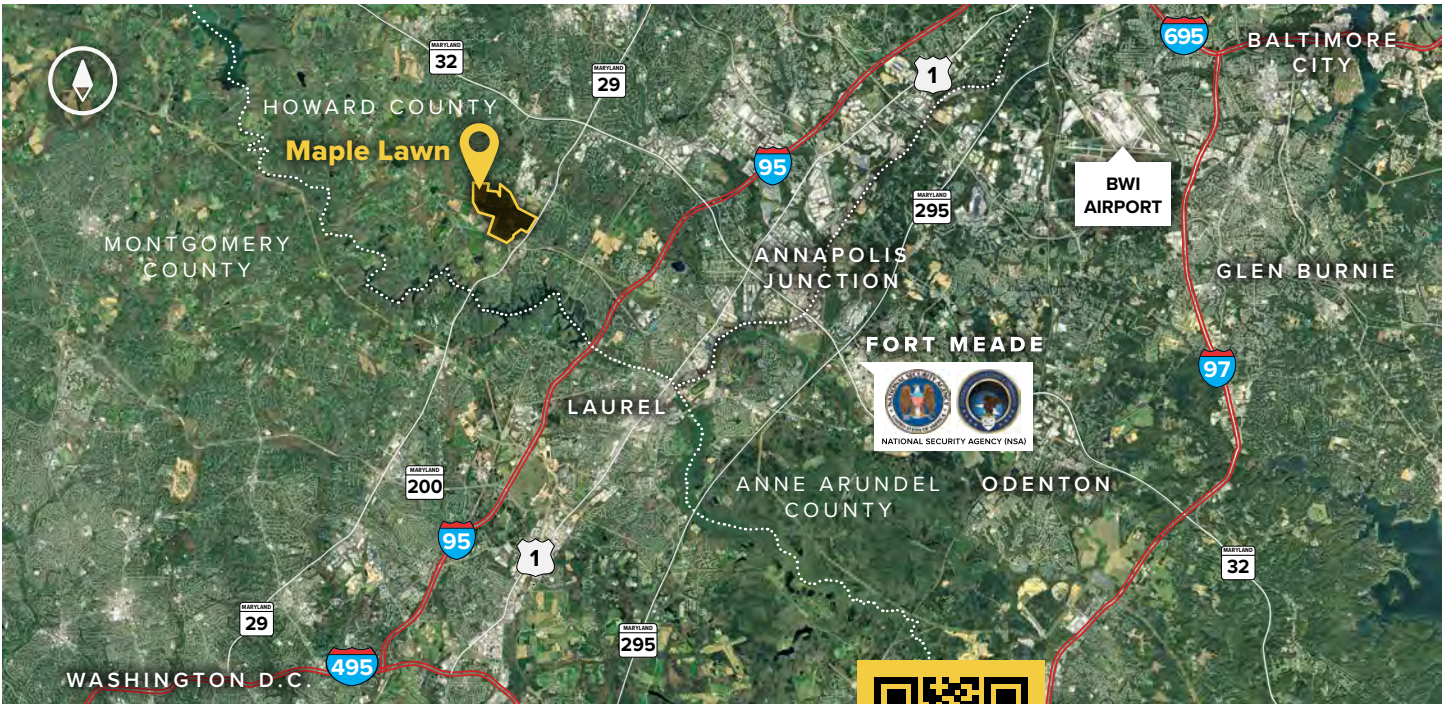
# 8161 Maple Lawn Boulevard

Four-Story Class 'A' Office • 116,218 Sq. Ft.



Building Specifications	
Suite Sizes	2,500 up to 116,218 SF
Parking	4 spaces per 1,000 SF
Elevator	Yes
HVAC	Gas, VAV with zone control
Lease Type	Full Service





Scan with your mobile device to take a virtual tour, download floor plans and more!

**Distances to:**

- AMTRAK/Marc Station at BWI Airport ..... 20 miles
- Baltimore, MD (Downtown) ..... 22 miles
- BWI Airport ..... 19 miles
- Columbia, MD (Downtown) ..... 6 miles
- Interstate 95 ..... 3 miles
- Interstate 495 (Capital Beltway) ..... 10 miles
- Interstate 695 (Baltimore Beltway) ..... 16 miles
- Intercounty Connector (ICC)/MD 200 ..... 4.5 miles
- JHU Applied Physics Laboratory ..... 1 mile
- MD Route 29 ..... 1 mile
- MD 295 (Baltimore-Washington Parkway) ..... 8 miles
- MD Route 32 ..... 2.7 miles
- NSA/Fort Meade ..... 9 miles

**About St. John Properties**

St. John Properties, Inc. is one of the nation's largest and most successful privately held commercial real estate firms. Founded in 1971, the vertically-integrated company develops, owns and manages office, flex/ research and development, warehouse, retail and residential space nationwide.

Connect with us @stjohnprop



# Contact Us

For additional information or to schedule a tour, contact:

**Bill Jautze**  
*Assistant Vice President,  
 Leasing*  
 bjautze@sjpi.com  
 410.369.1213

**Matt Lenihan**  
*Senior Vice President,  
 Leasing*  
 mlenihan@sjpi.com  
 410.369.1202

**Corporate Headquarters:**  
 2560 Lord Baltimore Drive, Baltimore, MD 21244  
**410.788.0100 | SJPI.COM**

Master Developer: **GREENBAUM ENTERPRISES**



*This information contained in this publication has been obtained from sources believed to be reliable. St. John Properties makes no guarantee, warranty or representation about this information. Any projections, opinions, assumptions or estimates used here are for example only and do not represent the current or future performance of the property. Interested parties should conduct an independent investigation to determine whether the property suits their needs. REV 04/24*