

Franklin Business Center

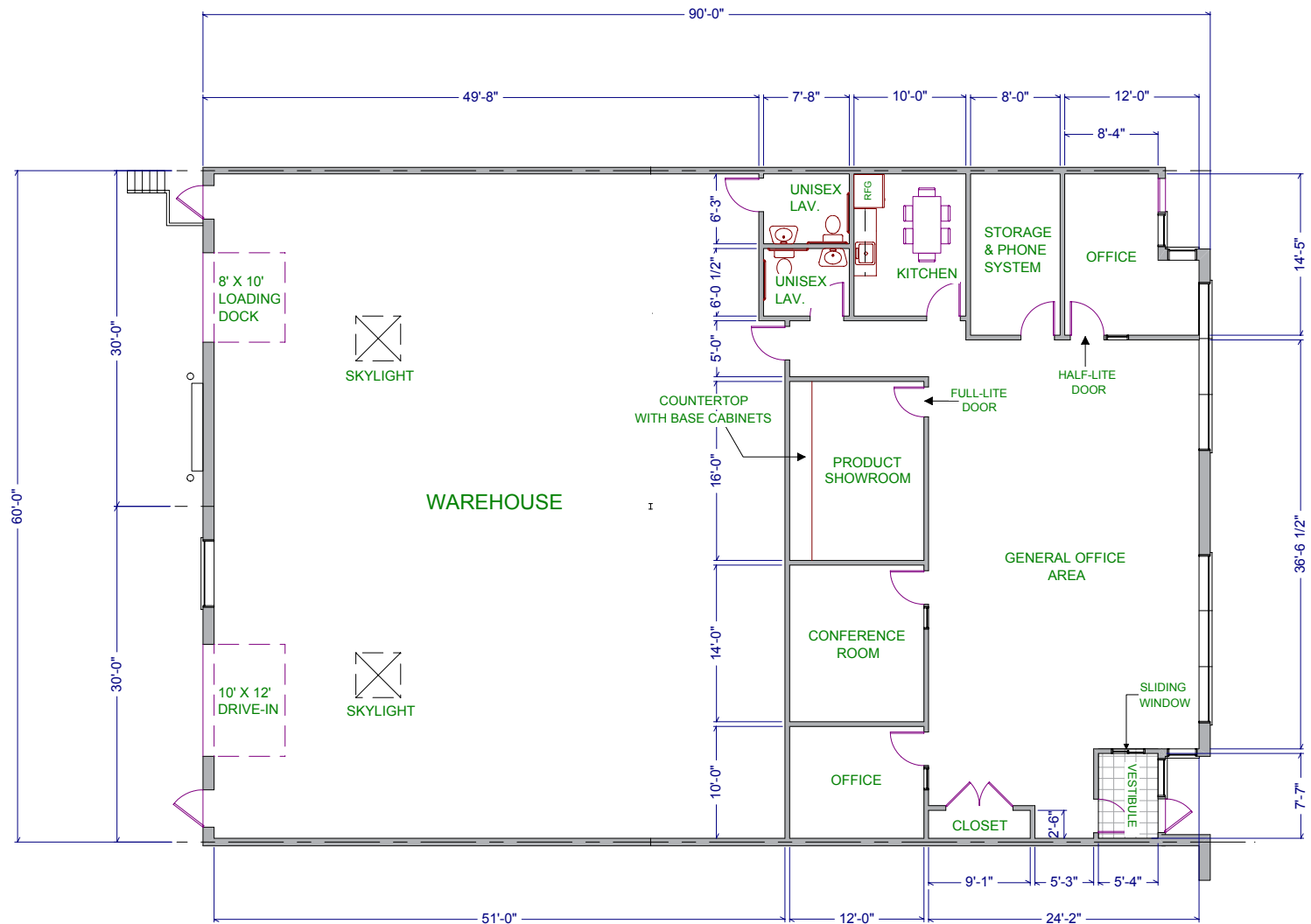
5062–5064 W Ashland Way | Franklin WI 53132



Total SF Available:
5,400 SF

2,298 sq. ft. office, 3,102 sq. ft.
warehouse with 16 ft. clear
height and dock and drive-in

**CLICK TO VIEW
VIRTUAL TOUR**



Note: This space plan is subject to existing field conditions. This drawing is proprietary and the exclusive property of St. John Properties, Inc. Any duplications, distribution, or other unauthorized use is strictly prohibited.



Franklin Business Center

5000–5080 W Ashland Way
Franklin, WI 53132

About the Property

Franklin Business Center is located at the southern end of Milwaukee County, and is located just three minutes from Interstate 94 on Ryan Road (Highway 100) and ten minutes from Milwaukee's General Mitchell International Airport. The business community provides easy access to Interstates 94 and 894, US Highways 41 and 45, and State Trunk Highway 36.



Flex/R&D/Office Buildings

5000-5040 W Ashland Way	45,500 SF
5050-5080 W Ashland Way	39,400 SF

Flex/R&D/Office Specifications

Suite Sizes	1,500 up to 45,500 SF
Ceiling Height	16 ft. clear minimum
Parking	220 spaces
Heat	Natural Gas
Roof	EPDM rubber
Construction	Masonry
Zoning	M-1

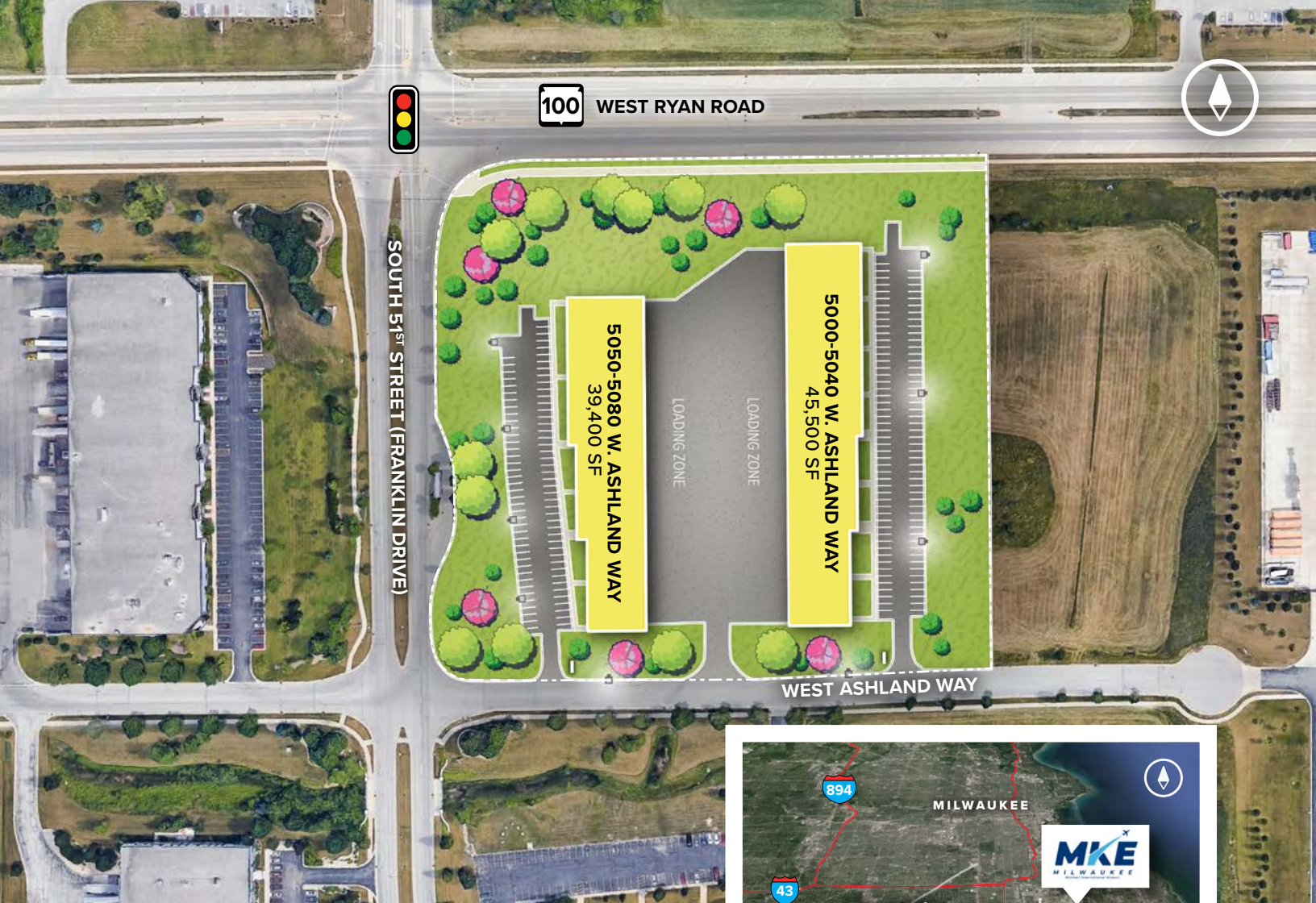
For more information on Franklin Business Center, visit: sjpi.com/Franklin



Placing Our Clients' Needs First Since 1971

SJPI.COM/WISCONSIN | 262.524.0100

NAIOP
COMMERCIAL REAL ESTATE
DEVELOPMENT ASSOCIATION
**NATIONAL
DEVELOPER
OF THE YEAR**
— 2018 —



Contact Us

For additional leasing information or to schedule a tour, contact:

Greg Fax

Regional Partner, Wisconsin

gfax@sjpi.com | 262.524.0100

Wisconsin Regional Office:

2000 Pewaukee Road | Suite A
Waukesha, WI 53188



MD • CO • LA • NC • NV • PA • TX • UT • VA • WI



262.524.0100 | SJPI.COM/WISCONSIN

About St. John Properties

St. John Properties, Inc. is one of the nation's largest and most successful privately held commercial real estate firms. Founded in 1971, the vertically-integrated company develops, owns and manages office, flex/research and development, warehouse, retail and residential space.

St. John Properties Wisconsin owns and is developing more than 1.7 million square feet of commercial space across 17 business communities in Wisconsin.

This information contained in this publication has been obtained from sources believed to be reliable. St. John Properties makes no guarantee, warranty or representation about this information. Any projections, opinions, assumptions or estimates used here are for example only and do not represent the current or future performance of the property. Interested parties should conduct an independent investigation to determine whether the property suits their needs. REV 11/22