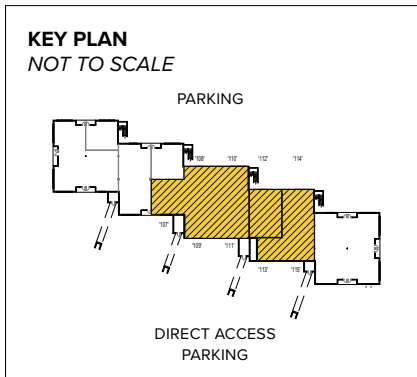




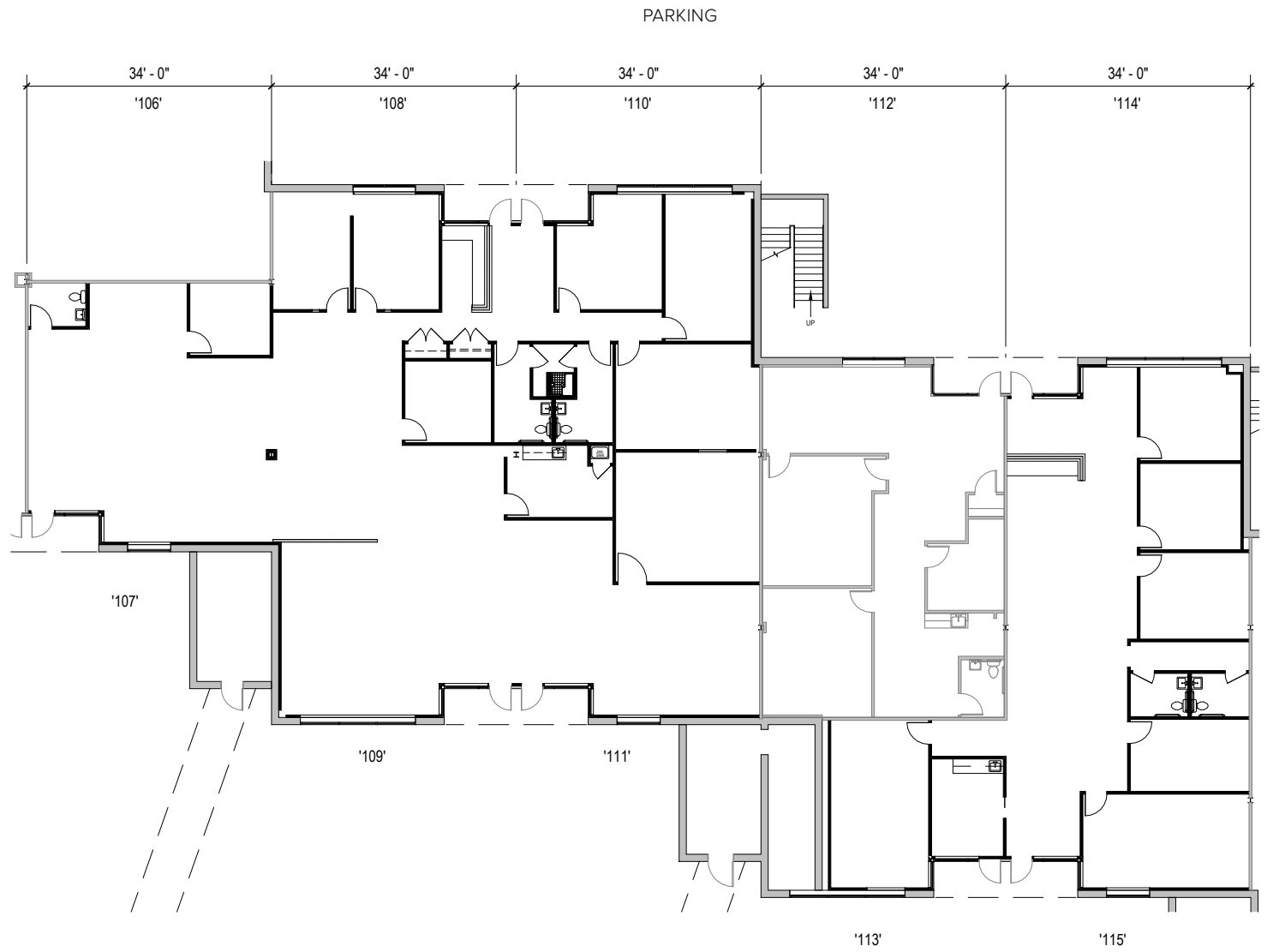
Total SF Available:
1,700 up to 11,258 SF

*Mix of private offices and
bullpen space, includes built-in
reception and shower*

**CLICK TO VIEW
VIRTUAL TOUR**



Note: This space plan is subject to existing field conditions. This drawing is proprietary and the exclusive property of St. John Properties, Inc. Any duplications, distribution, or other unauthorized use is strictly prohibited.



DIRECT ACCESS | PARKING

SPARKS

ASHLAND

YORKRIDGE CENTER NORTH
W WARREN RD

YORK ROAD



YORK ROAD
MARYLAND 45
Loveton Business Park

HUNT VALLEY
M CORMICK RD

LOVETON CIR



SHAWAN ROAD



Distances to:

Baltimore, MD (Downtown)	17 miles
BWI Airport	27 miles
Harrisburg, PA	58 miles
Interstate 83	3 miles
Interstate 695 (Baltimore Beltway)	8 miles
Timonium, MD	6 miles
Towson, MD	9 miles
York, PA	33 miles

Contact Us

For additional leasing information or to schedule a tour, contact:

Stephanie Caronna
Leasing Representative
scaronna@sjpi.com | 410.369.1235

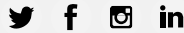
Corporate Headquarters:
2560 Lord Baltimore Drive | Baltimore, MD 21244
410.788.0100 | SJPI.COM



Scan with your mobile device to take a virtual tour, download our plans and more!

About St. John Properties
St. John Properties, Inc. is a full-service real estate company headquartered in Baltimore, Maryland. The company owns, manages and has developed more than 22 million square feet of commercial real estate, including office, ex/R&D, warehouse, retail and residential space.

Connect with us @stjohnprop



This information contained in this publication has been obtained from sources believed to be reliable. St. John Properties makes no guarantee, warranty or representation about this information. Any projections, opinions, assumptions or estimates used here are for example only and do not represent the current or future performance of the property. Interested parties should conduct an independent investigation to determine whether the property suits their needs. REV 11/22