

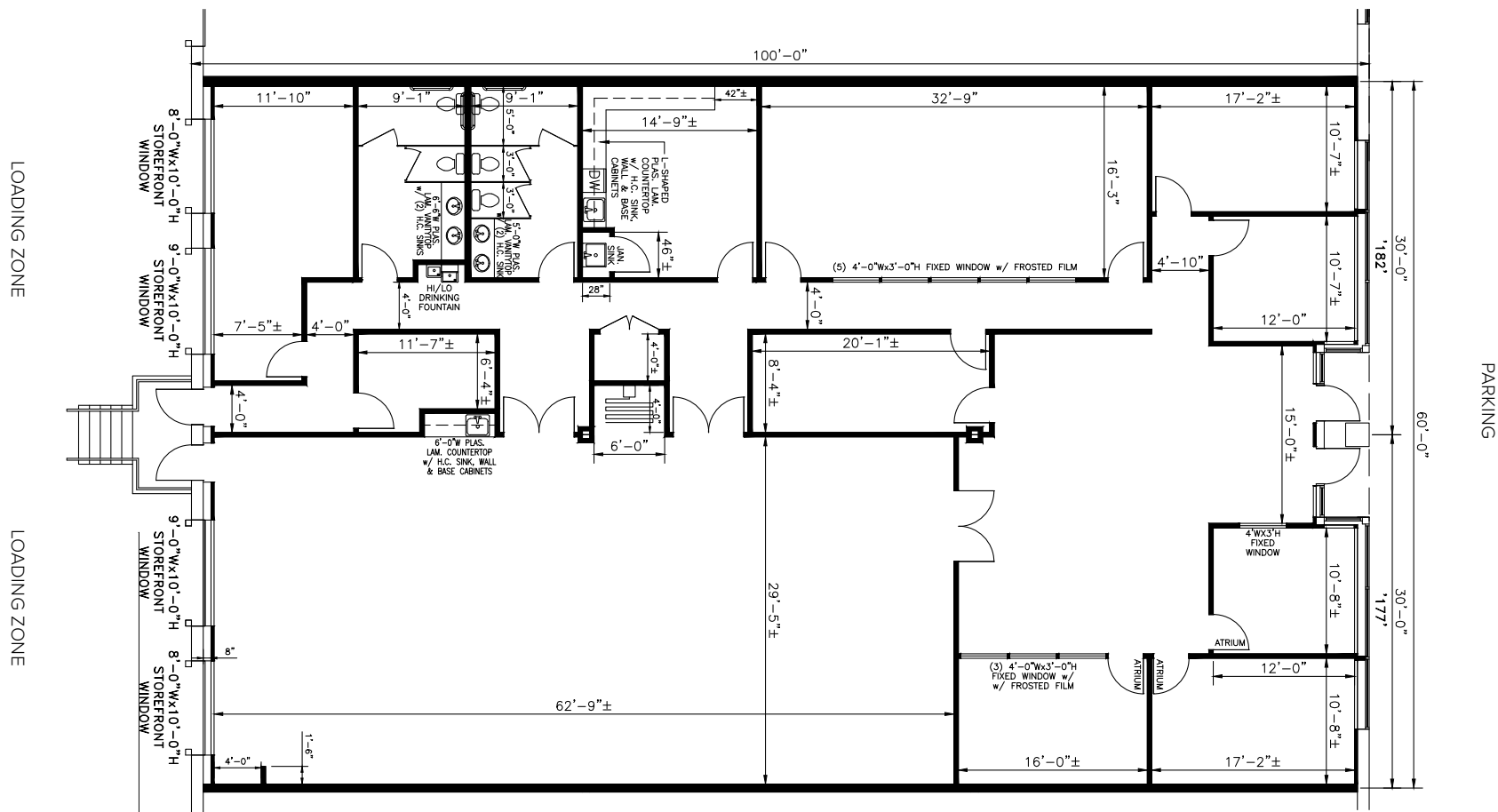


Suites 177-182

6,000 SF

Several private offices, break area, restrooms, 8'x10' storefront windows (2), and 9'x10' storefront windows (2)

Note: This space plan is subject to existing field conditions. This drawing is proprietary and the exclusive property of St. John Properties, Inc. Any duplications, distribution, or other unauthorized use is strictly prohibited.



About Ashburn Technology Park

Ashburn Technology Park is a project of St. John Properties, Inc., a full-service real estate company founded in 1971. The 43-acre business community is located off Waxpool Road (Virginia Route 625) and Red Rum Drive near the Dulles Greenway near Washington Dulles International Airport.

The unified architecture of St. John Properties' eight buildings, comprising 444,960 square feet of R&D/Flex/Office space, provides Ashburn Technology Park a campus-like business environment. Tenant sizes from 2,520 to 63,120 square feet of space offer businesses straight-forward, economical and high-utility space in a covenant-protected, well-maintained atmosphere. Thirty foot wide spaces combined with 16-18 foot ceiling heights offer maximum flexibility. Free, generous parking is available adjacent to the building, and the park also features paved walking paths with an exercise circuit.

For more information on Ashburn Technology Park, visit: sjpi.com/ashburntech

Flex/R&D Buildings

21660 Red Rum Drive	57,120 SF
21670 Red Rum Drive	63,120 SF
21690 Red Rum Drive	54,120 SF
21720 Red Rum Drive	54,120 SF
21730 Red Rum Drive	54,120 SF
21750 Red Rum Drive	54,120 SF
44190 Waxpool Road	54,120 SF LEED GOLD
44200 Waxpool Road	54,120 SF LEED GOLD

Flex/R&D Specifications

LEED (<i>select buildings</i>)	Gold Core & shell
Suite Sizes	2,520 up to 63,120 SF
Loading	Dock or drive-in
Ceiling Height	16 ft.-18 ft. clear height
Roof	EPDM Rubber/TPO
Walls	Brick on block
Office	Build to suit
Parking	4 spaces per 1,000 SF
Heat	Gas
Zoning	PDIP 1993





Distances to:

Dulles International Airport	5 miles
Loudoun Metro Station	1 mile
Leesburg, VA	6 miles
Reston, VA	9 miles
Tysons Corner	13 miles
VA Route 7	1 mile
VA Route 28	0.5 miles
VA Route 267 (Dulles Greenway)	3 miles
Washington, D.C.	25 miles

Contact Us

For additional leasing information or to schedule a tour, contact:

Danny Foit

Leasing
Representative

dfoit@sjpi.com
703.858.9215

Matt Holbrook

Regional Partner, Virginia &
Central Maryland

mholbrook@sjpi.com
703.858.9215

Virginia Regional Office:

21750 Red Rum Drive | Suite 182 | Ashburn, Virginia 20147

703.858.9215 | SJPI.COM/VIRGINIA



MD • CO • FL • LA • NC • NV • PA • TX • UT • VA • WI



— 2018 —



Scan with your mobile device
to take a virtual tour, download
floor plans and more!

About St. John Properties

St. John Properties, Inc. is one of the nation's largest and most successful privately held commercial real estate firms. Founded in 1971, the vertically-integrated company develops, owns and manages office, flex/ research and development, warehouse, retail and residential space nationwide.

St. John Properties' Virginia and Central Maryland regional office has developed and owns more than 4.2 million square feet of commercial space in Frederick County, Maryland as well as Loudoun and Prince William Counties in Virginia.

