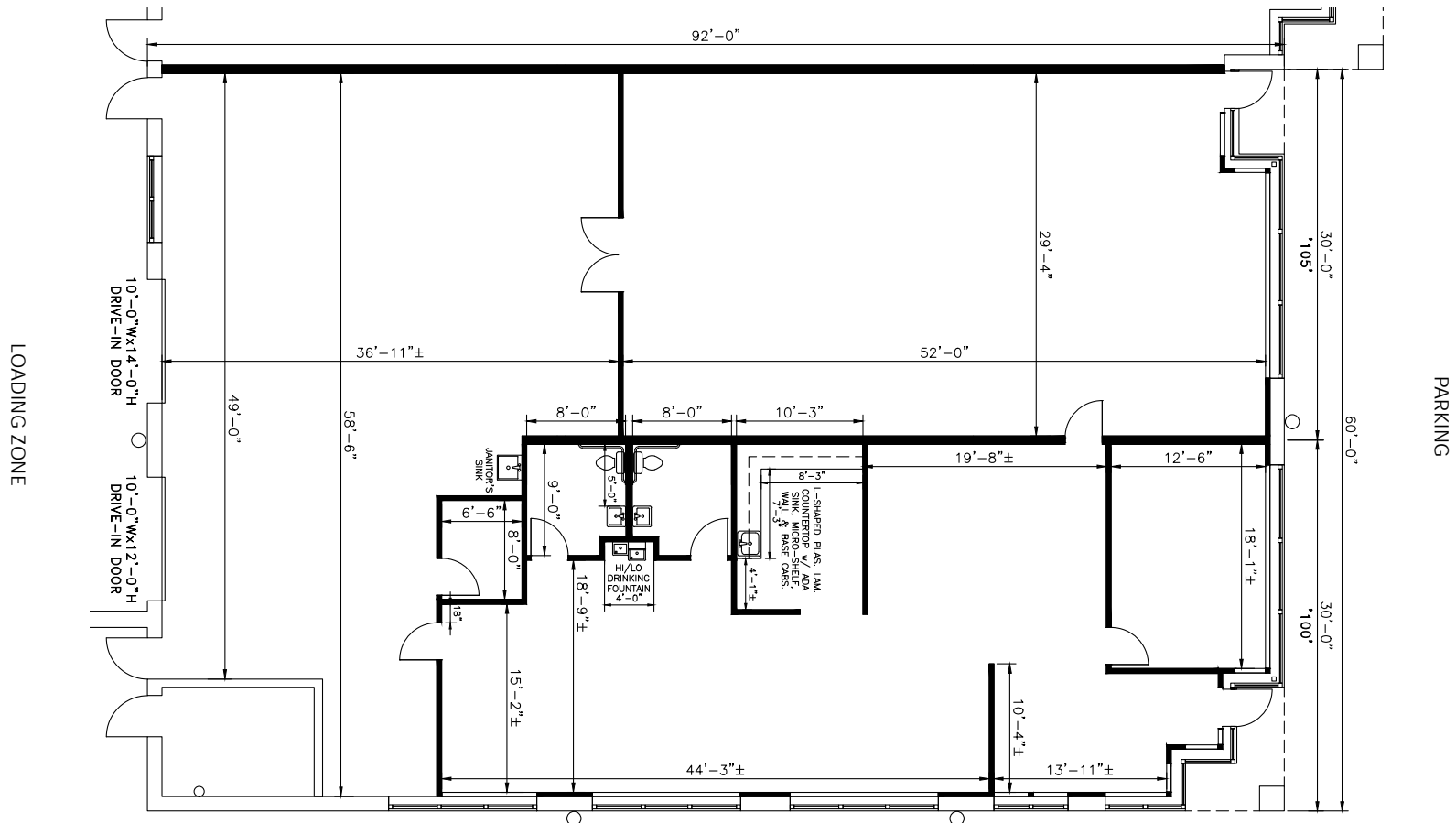
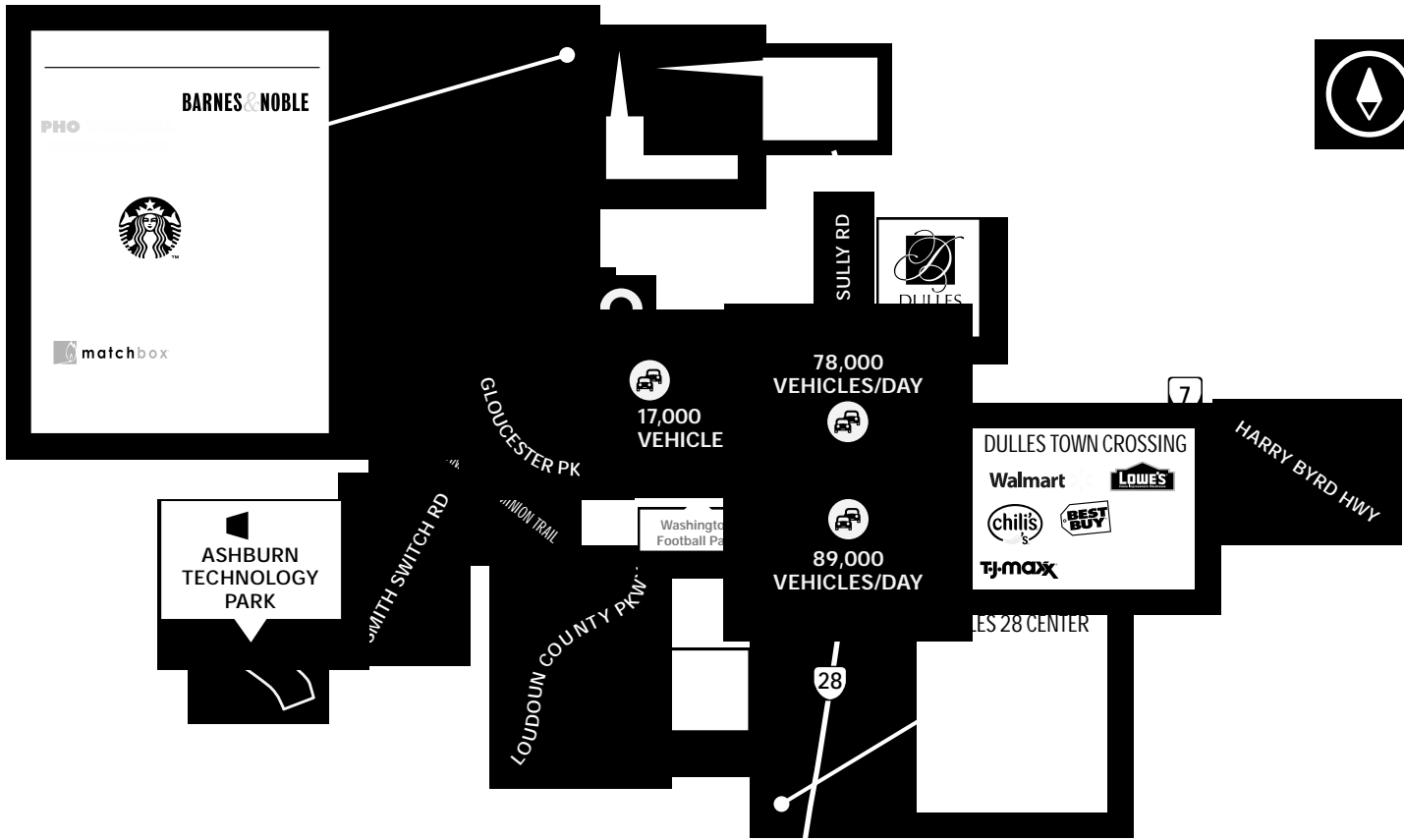




Total SF Available:
5,520 SF

Note: This space plan is subject to existing field conditions. This drawing is proprietary and the exclusive property of St. John Properties, Inc. Any duplications, distribution, or other unauthorized use is strictly prohibited.





Distances to:

- Dulles International Airport 3.5 miles
- Dulles Toll Road 2.6 miles
- Dulles Town Center 1.2 miles
- One Loudoun01 mile
- Route 7 (Harry Byrd Highway) 1.1 miles
- Route 28 (Nokes Boulevard) 1 mile
- Washington, D.C. (Downtown) 25 miles



Scan with your mobile device to take a virtual tour, download our plans and more!

Contact Us

For additional leasing information or to schedule a tour, contact:

Danny Foit
 Leasing Representative
 dfoit@sjpi.com
 703.858.9215

Matthew Ho brook
 Regional Partner,
 Virginia & Central Maryland
 mho_brook@sjpi.com
 703.858.9215

Virginia Regional Office:
 21750 Red Rum Drive | Suite 182
 Ashburn, Virginia 20147
703.858.9215 | SJPI.COM/VIRGINIA

About St. John Properties

St. John Properties, Inc. is one of the nation's largest and most successful privately held commercial real estate firms. Founded in 1971, the vertically-integrated company develops, owns and manages office, retail, research and development, warehouse, retail and residential space nationwide.

St. John Properties Virginia and Central Maryland regional office has developed and owns more than 4.2 million square feet of commercial space in Frederick County, Maryland as well as Loudoun and Prince William Counties in Virginia.



This information contained in this publication has been obtained from sources believed to be reliable. St. John Properties makes no guarantee, warranty or representation about this information. Any projections, opinions, assumptions or estimates used here are for example only and do not represent the current or future performance of the property. Interested parties should conduct an independent investigation to determine whether the property suits their needs. REV 07/23