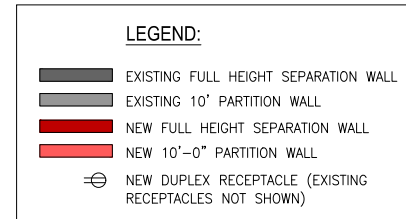


**Madison East Business Center**  
4610 S. Biltmore Lane | Madison, WI 53718  
Suite 105



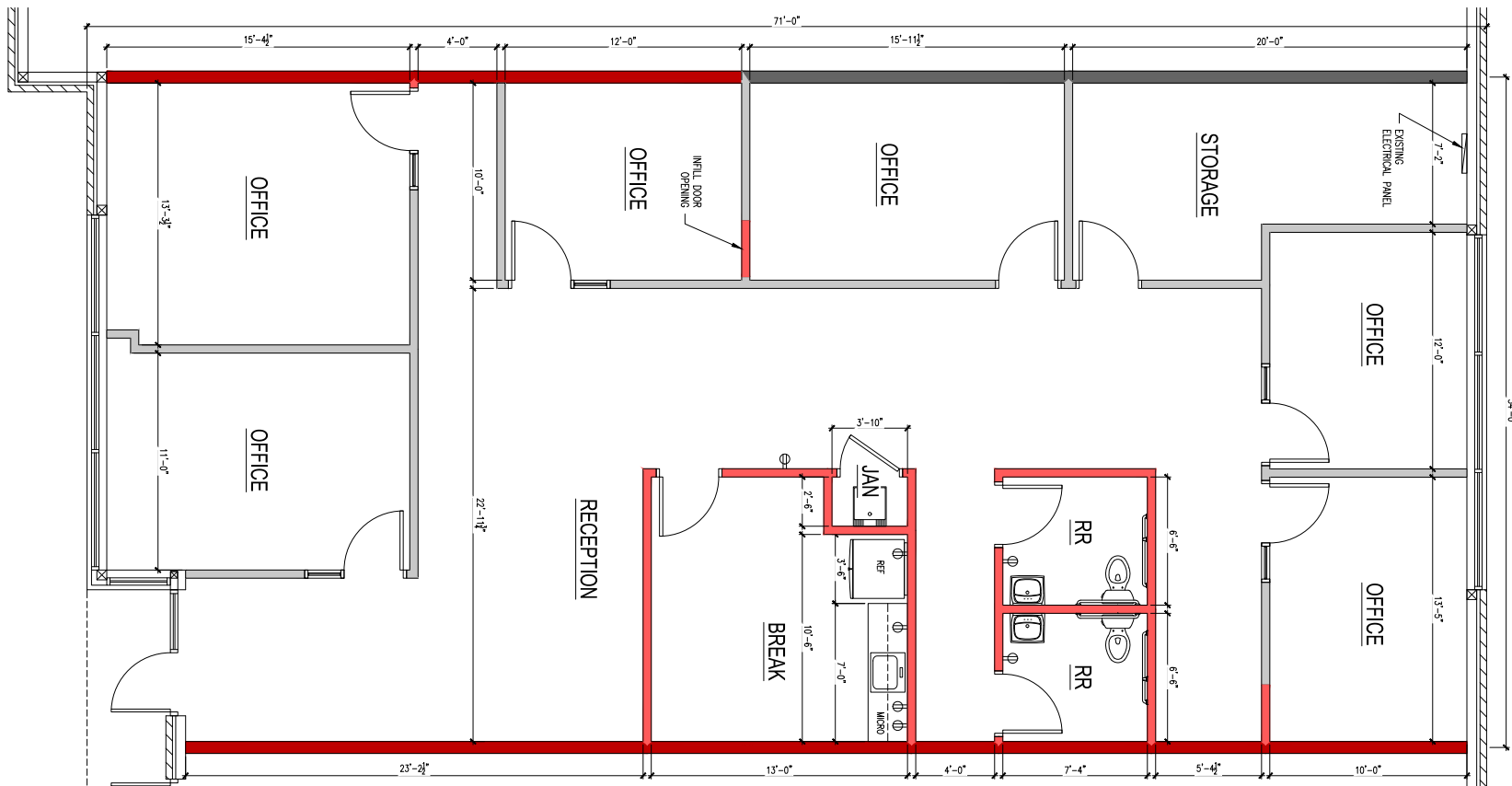
**Total SF Available:**  
**2,414 SF**

*Private offices (6), break area, with restrooms*



**CLICK TO VIEW  
VIRTUAL TOUR**

***Note:** This space plan is subject to existing field conditions. This drawing is proprietary and the exclusive property of St. John Properties, Inc. Any duplications, distribution, or other unauthorized use is strictly prohibited.*





**DIRECT-ENTRY SUITES FROM EXTERIOR WITHOUT SHARED COMMON AREAS**

# Madison East Business Center

**South Biltmore Lane at Eastpark Boulevard**

**Madison, WI 53718**

## About The Property

Madison East Business Center consists of four single story office buildings totaling 111,075 square feet designed within a campus-style setting. The center is located within American Center Business Park and is highly visible.

### Single-Story Office/Retail Buildings

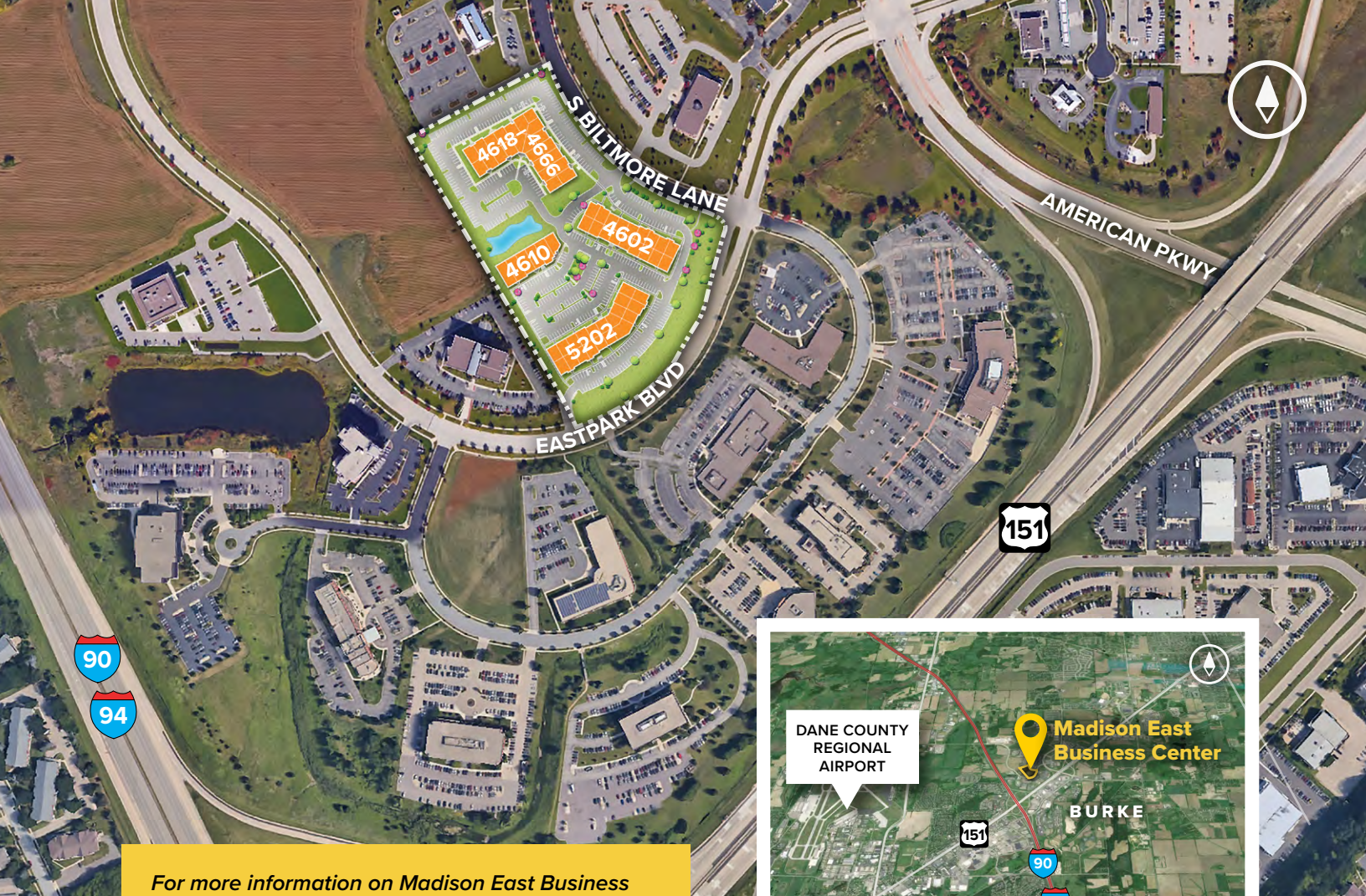
4602 South Biltmore Lane	26,950 SF
4610 South Biltmore Lane	14,310 SF
4618-4666 South Biltmore Lane	39,290 SF
5202 Eastpark Boulevard	30,525 SF

### Single-Story Office/Retail Specifications

Parking	4.2 per 1,000 SF
Heat	Natural Gas
Roof	EPDM rubber
Exterior Walls	Masonry
Zoning	SEC







For more information on Madison East Business Center, visit: [sjpi.com/madisoneast](http://sjpi.com/madisoneast)

## Contact Us

For additional leasing information or to schedule a tour, contact:

### Greg Fax

Regional Partner, Wisconsin

[gfax@sjpi.com](mailto:gfax@sjpi.com) | 262.524.0100

### Wisconsin Regional Office:

2000 Pewaukee Road | Suite A  
Waukesha, WI 53188

**262.524.0100**

**[SJPI.COM/WISCONSIN](http://SJPI.COM/WISCONSIN)**



MD • CO • LA • NV • PA • UT • VA • WI



### About St. John Properties

St. John Properties Wisconsin owns and is developing more than 1.7 million square feet of commercial space across 16 business communities in Wisconsin.

St. John Properties, Inc. is a full-service real estate company headquartered in Baltimore, Maryland. The company owns, manages and has developed more than 22 million square feet of commercial real estate nationwide.

Connect with us [@stjohnprop](https://www.instagram.com/stjohnprop)



This information contained in this publication has been obtained from sources believed to be reliable. St. John Properties makes no guarantee, warranty or representation about this information. Any projections, opinions, assumptions or estimates used here are for example only and do not represent the current or future performance of the property. Interested parties should conduct an independent investigation to determine whether the property suits their needs. REV 02/22