



Total SF Available:
6,306 SF

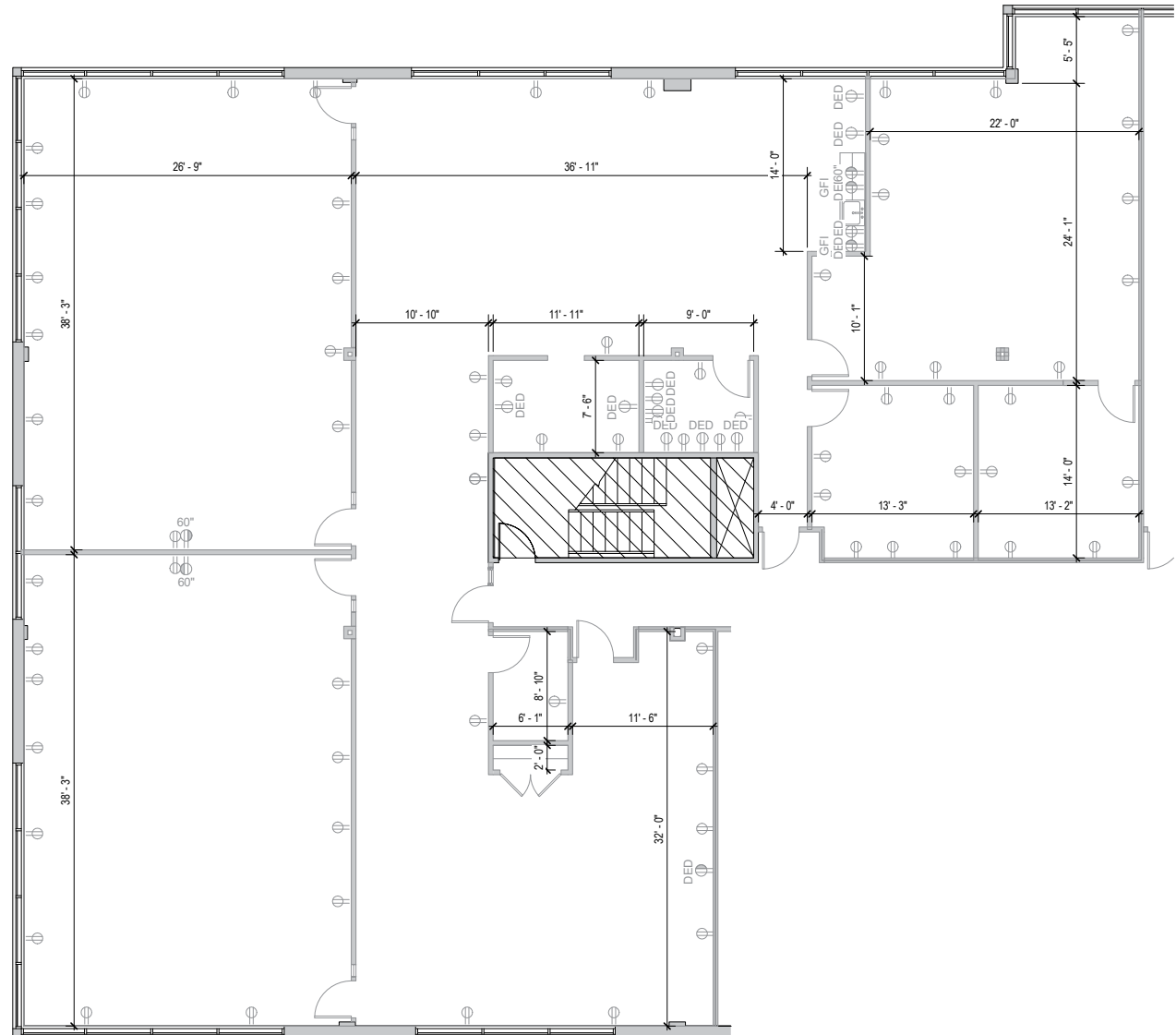
End unit with great glass line, large training rooms, bullpen, and open kitchen

**CLICK TO VIEW
VIRTUAL TOUR**

**KEY PLAN
NOT TO SCALE**



Note: This space plan is subject to existing field conditions. This drawing is proprietary and the exclusive property of St. John Properties, Inc. Any duplications, distribution, or other unauthorized use is strictly prohibited.



About Cromwell Center

Cromwell Center is a two-building, 120,000 square foot complex located directly off Baltimore Beltway Exit 29A and Cromwell Bridge Road in Towson, Maryland. Two three-story, 60,000 square foot office buildings each has 20,000 square foot floorplates designed for maximum flexibility.

The project site features a beautiful wooded setting with mature landscaping, conference room, on site gym, as well as local business amenities, including a hotel within walking distance.

For more information on Cromwell Center, visit: sjpi.com/cromwellcenter

Three-Story Office Buildings

809 Gleneagles Court	60,000 SF
810 Gleneagles Court	60,000 SF

Three-Story Office Specifications

Suite Sizes	1,000 up to 60,000 SF
Ceiling Height	8.5 ft. clear minimum
Offices	Built to suit
Elevator	Yes
Parking	3 spaces per 1,000 SF
HVAC	Gas, VAV with zone control
Zoning	ML-IM





Distances to:

Baltimore, MD (Downtown)	9 miles
BWI Airport	19 miles
Interstate 83	4.4 miles
Interstate 95	6 miles
Towson, MD	1.5 miles
Owings Mills, MD	12 miles
White Marsh, MD	8 miles



Scan with your mobile device to take a virtual tour, download floor plans and more!

Contact Us

For additional leasing information or to schedule a tour, contact:

Stephanie Caronna

Leasing Representative

scaronna@sjpi.com | 410.369.1235

Corporate Headquarters:

2560 Lord Baltimore Drive | Baltimore, MD 21244

410.788.0100 | SJPI.COM

About St. John Properties

St. John Properties, Inc. is one of the nation's largest and most successful privately held commercial real estate firms. The company owns, manages, and has developed office, flex/research and development, warehouse, retail, and residential space nationwide.

Connect with us @stjohnprop



This information contained in this publication has been obtained from sources believed to be reliable. St. John Properties makes no guarantee, warranty or representation about this information. Any projections, opinions, assumptions or estimates used here are for example only and do not represent the current or future performance of the property. Interested parties should conduct an independent investigation to determine whether the property suits their needs. REV 05/23