

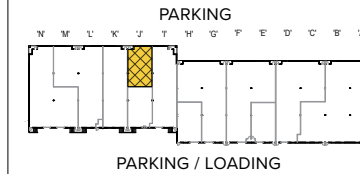
**Yorkridge Center South**  
1850 York Road | Timonium, MD 21093  
Suite J(front)



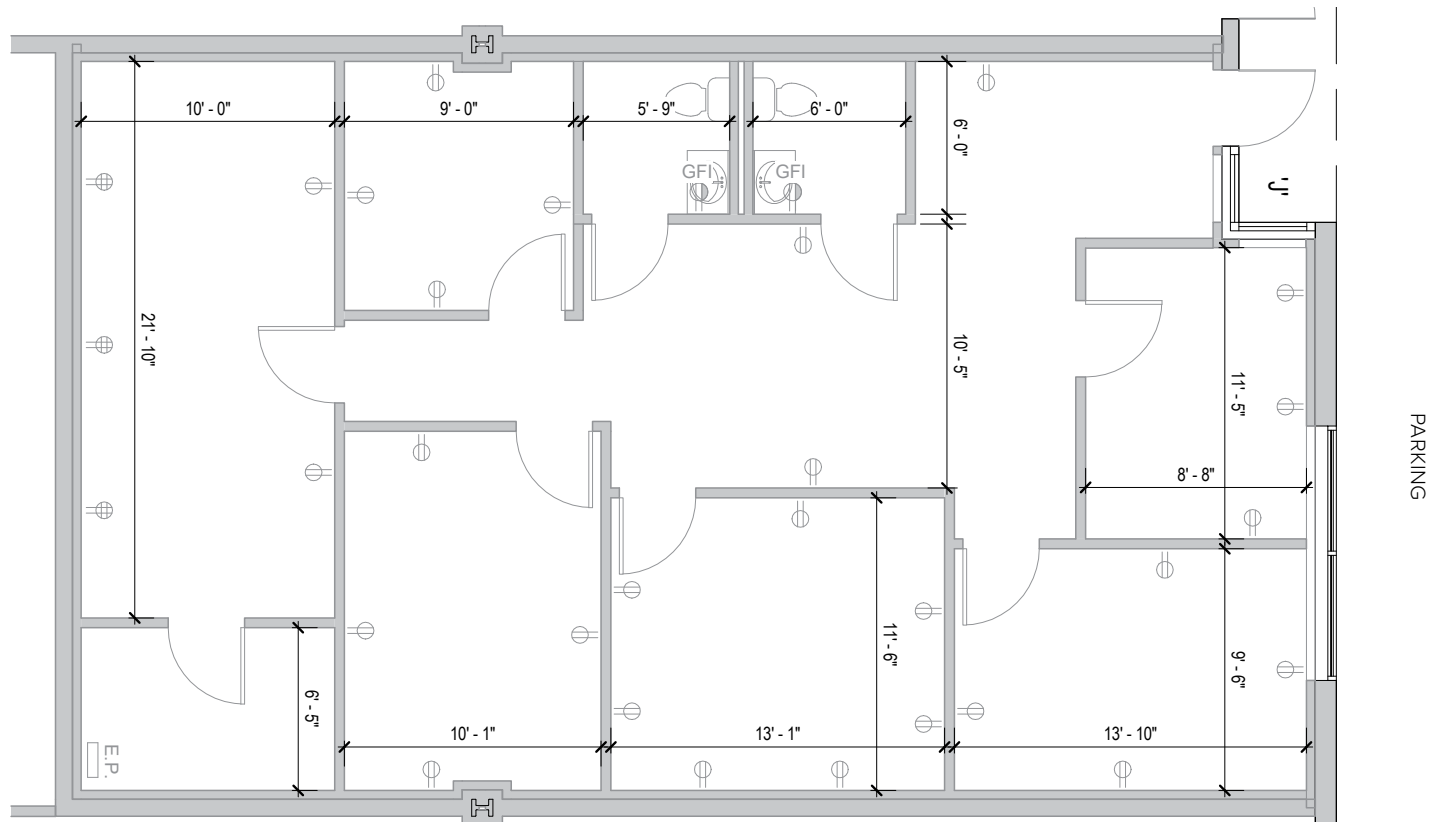
**Total SF Available:**  
**1,500 SF**

*Fully built-out office space*

**KEY PLAN**  
NOT TO SCALE



**Note:** This space plan is subject to existing field conditions. This drawing is proprietary and the exclusive property of St. John Properties, Inc. Any duplications, distribution, or other unauthorized use is strictly prohibited.



## About Yorkridge Center South

Conveniently located in the Timonium area of Baltimore County, Yorkridge Center South consists of three buildings comprising more than 101,200 square feet of retail and flex/R&D space. This location is easily accessible from the Timonium Road exit off Interstate 83 and offers easy access to the Baltimore Beltway (Interstate 695), downtown Baltimore, Towson, Timonium, BWI Airport to the south, and points north including the Harrisburg and York, PA markets.



### Flex/R&D Buildings

1840 York Road	38,985 SF
1850 York Road	42,042 SF

### Flex/R&D Specifications

Suite Sizes	1,500 up to 42,042 SF
Ceiling Height	16 ft. clear minimum
Parking	4 spaces per 1,000 SF
Heat	Gas
Roof	EPDM rubber
Construction	Brick on block
Loading	Dock or drive-in
Zoning	BM-IM & ML-IM

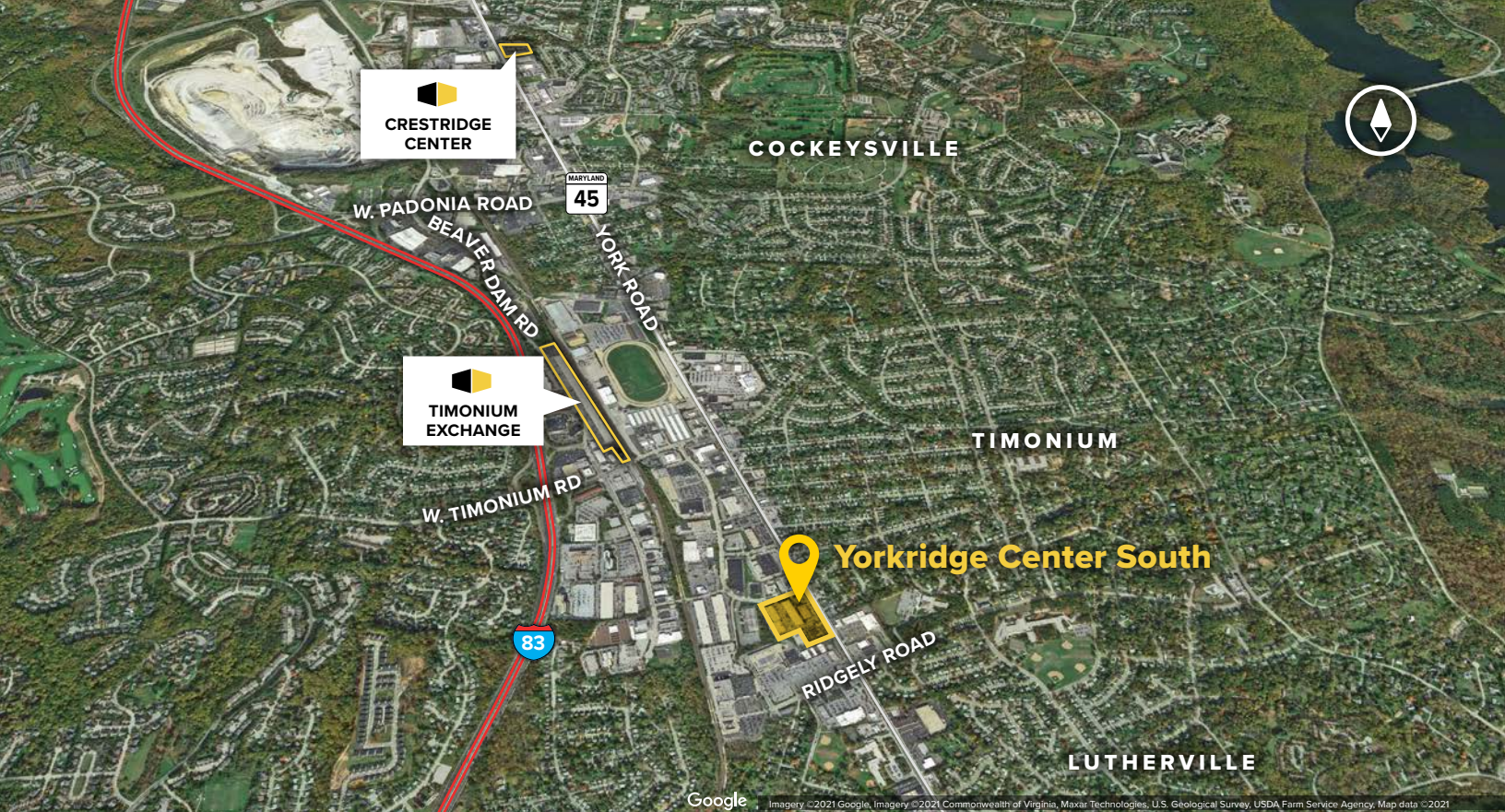
### Retail Buildings

1830 York Road	20,187 SF
Bertucci's Italian Restaurant	6,280 SF

For more information on Yorkridge Center South, visit: [sjpi.com/yorkridgesouth](http://sjpi.com/yorkridgesouth)







#### Distances to:

Baltimore, MD (Downtown) .....	10 miles
BWI Airport .....	20 miles
Cockeysville, MD .....	3 miles
Harrisburg, PA .....	65 miles
Interstate 83 .....	1 mile
Interstate 695 .....	2 miles
Towson, MD .....	2 miles
York, PA .....	40 miles



**Scan with your mobile device to take a virtual tour, download floor plans and more!**

## Contact Us

For additional leasing information or to schedule a tour, contact:

#### Stephanie Caronna

Leasing Representative

scaronna@sjpi.com | 410.369.1235

#### Corporate Headquarters:

2560 Lord Baltimore Drive | Baltimore, MD 21244

**410.788.0100 | SJPI.COM**

#### About St. John Properties

St. John Properties, Inc. is one of the nation's largest and most successful privately held commercial real estate firms. The company owns, manages, and has developed office, flex/research and development, warehouse, retail, and residential space nationwide.

Connect with us @stjohnprop



*This information contained in this publication has been obtained from sources believed to be reliable. St. John Properties makes no guarantee, warranty or representation about this information. Any projections, opinions, assumptions or estimates used here are for example only and do not represent the current or future performance of the property. Interested parties should conduct an independent investigation to determine whether the property suits their needs. REV 6/23*