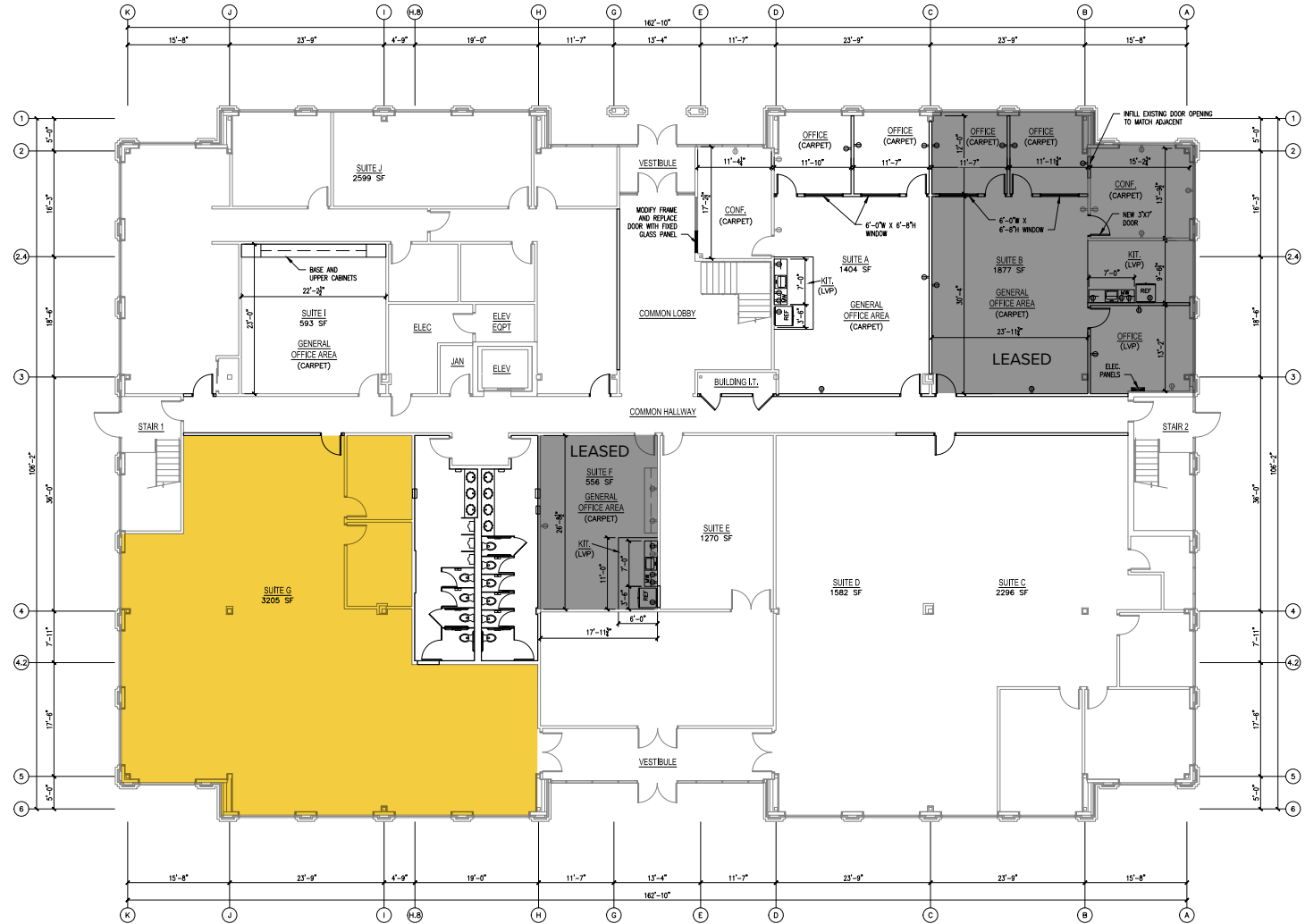


**Donges Bay Office Center**  
10375 N Baldev Court | Mequon, WI 53092  
Suite G | First Floor



**Total SF Available:**  
**3,205 SF**

*Note: This space plan is subject to existing field conditions. This drawing is proprietary and the exclusive property of St. John Properties, Inc. Any duplications, distribution, or other unauthorized use is strictly prohibited.*





**NEWLY RENOVATED!**

# Donges Bay Office Center

**10375 N Baldev Court**  
Mequon, WI 53092

## About the Property

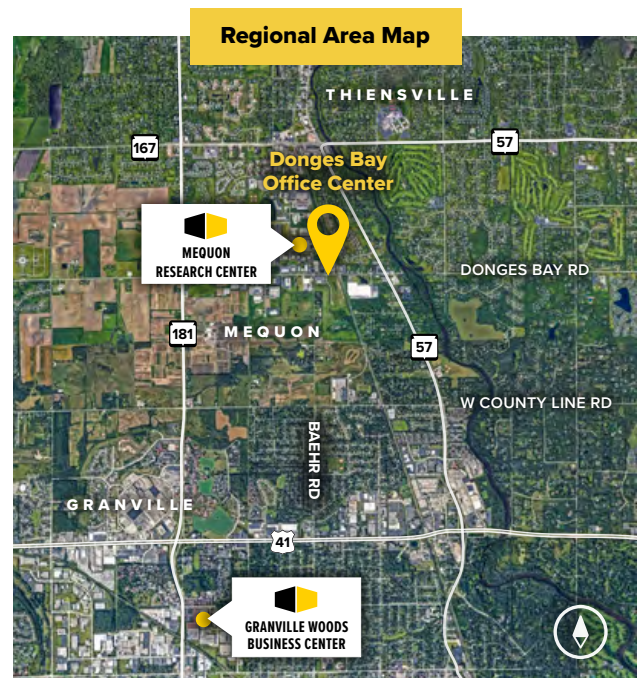
- ▶ Two-story atrium lobby
- ▶ Monument signage
- ▶ Raised IT room flooring
- ▶ On-site UPS system
- ▶ Expansive glass lines

### Class 'B' Office Building

10375 N Baldev Court 35,654 SF

### Building Specifications

Suite Sizes	Up to 35,654 SF
Ceiling Height	9.6 ft. clear minimum
Parking	5.8 spaces per 1,000 SF
Zoning	B-5







For more information on Donges Bay Office Center, visit: [sjpi.com/dongesoffice](https://sjpi.com/dongesoffice)

## Contact Us

For additional leasing information or to schedule a tour, contact:

### Greg Fax

Regional Partner, Wisconsin

[gfax@sjpi.com](mailto:gfax@sjpi.com) | 262.524.0100

### Wisconsin Regional Office:

2000 Pewaukee Road | Suite A  
Waukesha, WI 53188

**262.524.0100 | [SJPI.COM/WISCONSIN](https://sjpi.com/wisconsin)**



MD • CO • FL • LA • NC • NV • PA • TX • UT • VA • WI



This information contained in this publication has been obtained from sources believed to be reliable. St. John Properties makes no guarantee, warranty or representation about this information. Any projections, opinions, assumptions or estimates used here are for example only and do not represent the current or future performance of the property. Interested parties should conduct an independent investigation to determine whether the property suits their needs. REV 08/23



### About St. John Properties

St. John Properties Wisconsin owns and is developing more than 1.7 million square feet of commercial space across 16 business communities in Wisconsin.

St. John Properties, Inc. is a full-service real estate company headquartered in Baltimore, Maryland. The company owns, manages and has developed more than 23 million square feet of commercial real estate nationwide.

Connect with us @[@stjohnprop](https://twitter.com/stjohnprop)

