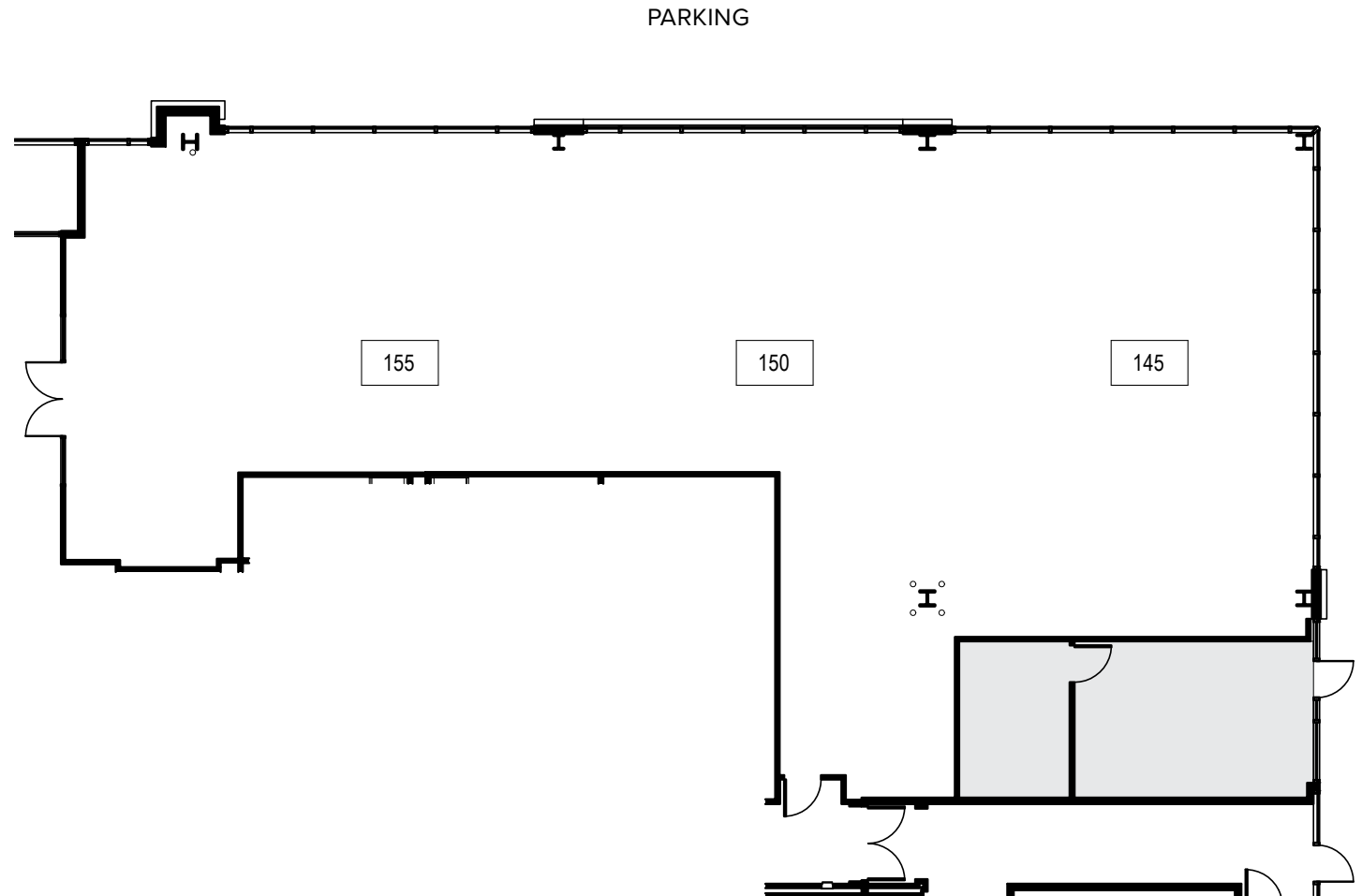
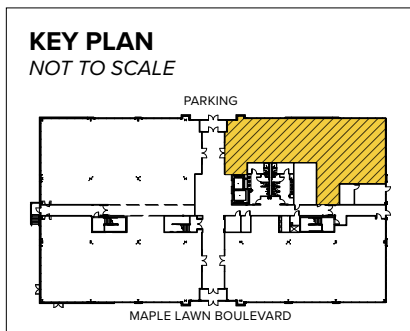




Total SF Available:
4,187 SF

NEW! Build to suit shell space



Note: This space plan is subject to existing field conditions. This drawing is proprietary and the exclusive property of St. John Properties, Inc. Any duplications, distribution, or other unauthorized use is strictly prohibited.

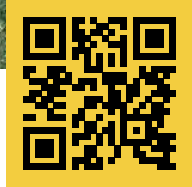
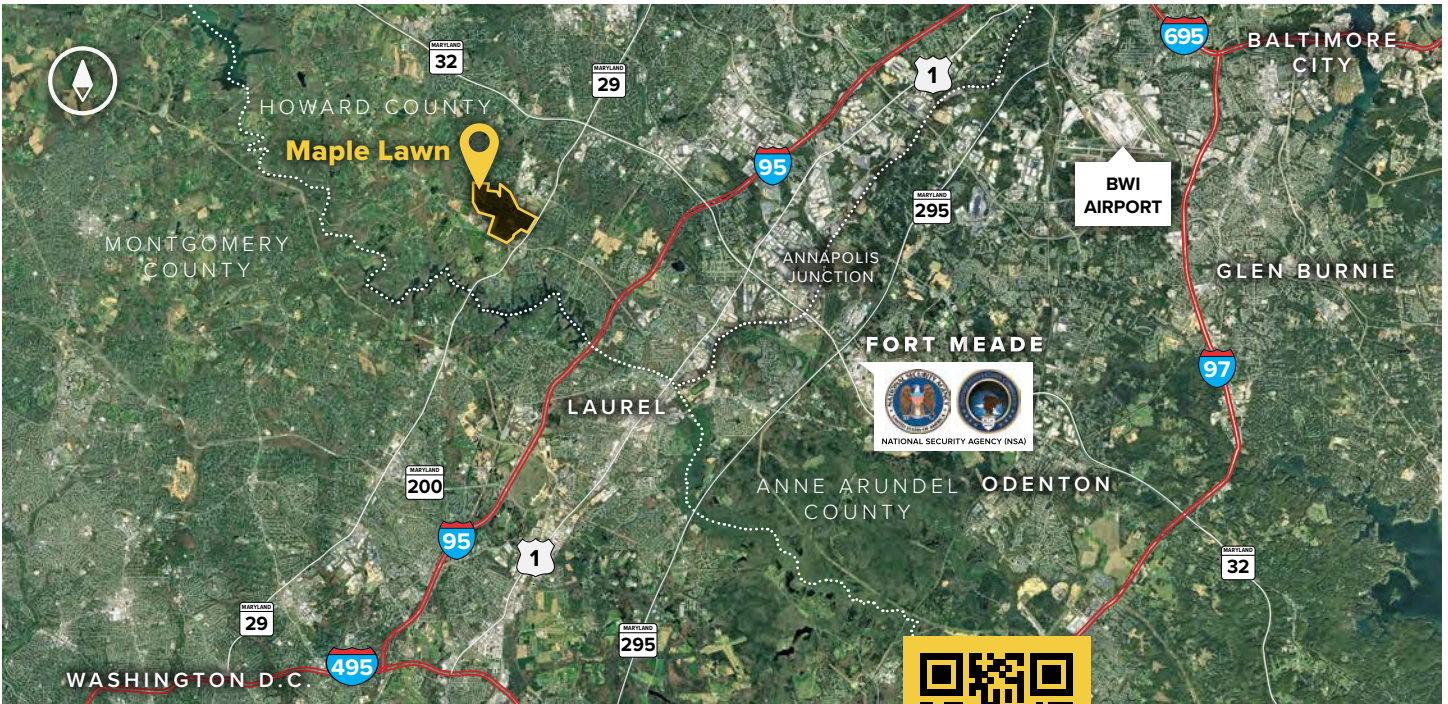


8120 Maple Lawn Boulevard

Four-Story Class 'A' Office • 103,755 Sq. Ft.

8120 Maple Lawn Boulevard	
LEED	Gold Core & shell
Suite Sizes	2,500 up to 103,755 SF
Office	Build to suit
Parking	4 spaces per 1,000 SF
Elevator	Yes
HVAC	Gas, VAV with zone control
Lease Type	Full Service





Scan with your mobile device to take a virtual tour, download floor plans and more!

Distances to:

- AMTRAK/Marc Station at BWI Airport 20 miles
- Baltimore, MD (Downtown) 22 miles
- BWI Airport 19 miles
- Columbia, MD (Downtown) 6 miles
- Interstate 95 3 miles
- Interstate 495 (Capital Beltway) 10 miles
- Interstate 695 (Baltimore Beltway) 16 miles
- Intercounty Connector (ICC)/MD 200 4.5 miles
- JHU Applied Physics Laboratory 1 mile
- MD Route 29 1 mile
- MD 295 (Baltimore-Washington Parkway) 8 miles
- MD Route 32 2.7 miles
- NSA/Fort Meade 9 miles

About St. John Properties

St. John Properties, Inc. is one of the nation's largest and most successful privately held commercial real estate firms. Founded in 1971, the vertically-integrated company develops, owns and manages office, flex/ research and development, warehouse, retail and residential space nationwide.

Connect with us @stjohnprop



Contact Us

For additional information or to schedule a tour, contact:

Bill Jautze
*Assistant Vice President,
 Leasing*
 bjautze@sjpi.com
 410.369.1213

Matt Lenihan
*Senior Vice President,
 Leasing*
 mlenihan@sjpi.com
 410.369.1202

Corporate Headquarters:
 2560 Lord Baltimore Drive, Baltimore, MD 21244
410.788.0100 | SJPI.COM

Master Developer: **GREENBAUM ENTERPRISES**

ST. JOHN PROPERTIES
 MD • CO • LA • NC • NV • PA • TX • UT • VA • WI

NAIOP
 COMMERCIAL REAL ESTATE DEVELOPMENT ASSOCIATION
NATIONAL DEVELOPER OF THE YEAR 2018

This information contained in this publication has been obtained from sources believed to be reliable. St. John Properties makes no guarantee, warranty or representation about this information. Any projections, opinions, assumptions or estimates used here are for example only and do not represent the current or future performance of the property. Interested parties should conduct an independent investigation to determine whether the property suits their needs. REV 01/23