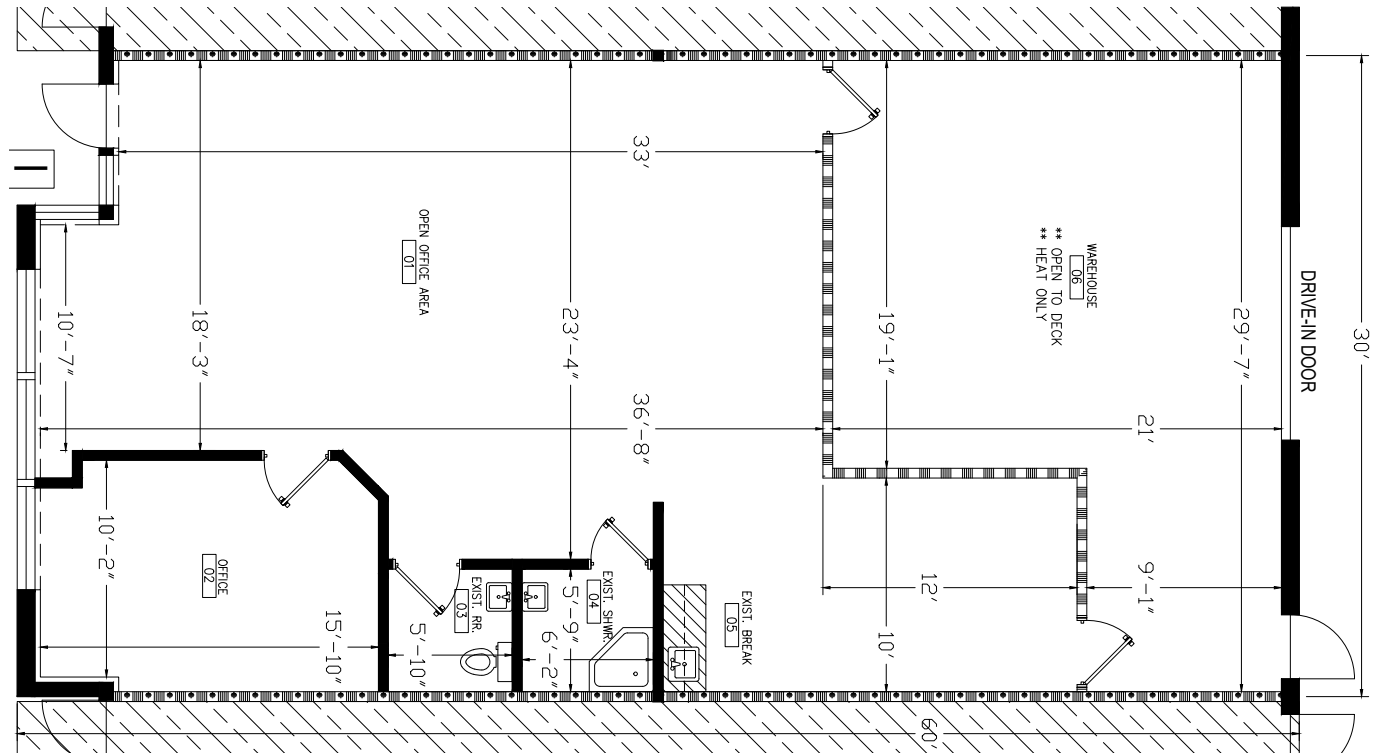
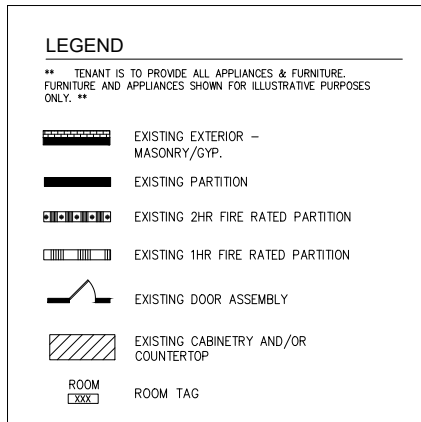
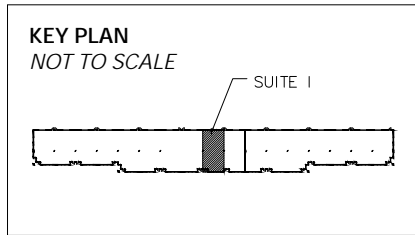


Total SF Available:

1,800 SF

1,262 SF office, 538 SF
warehouse with drive-in loading

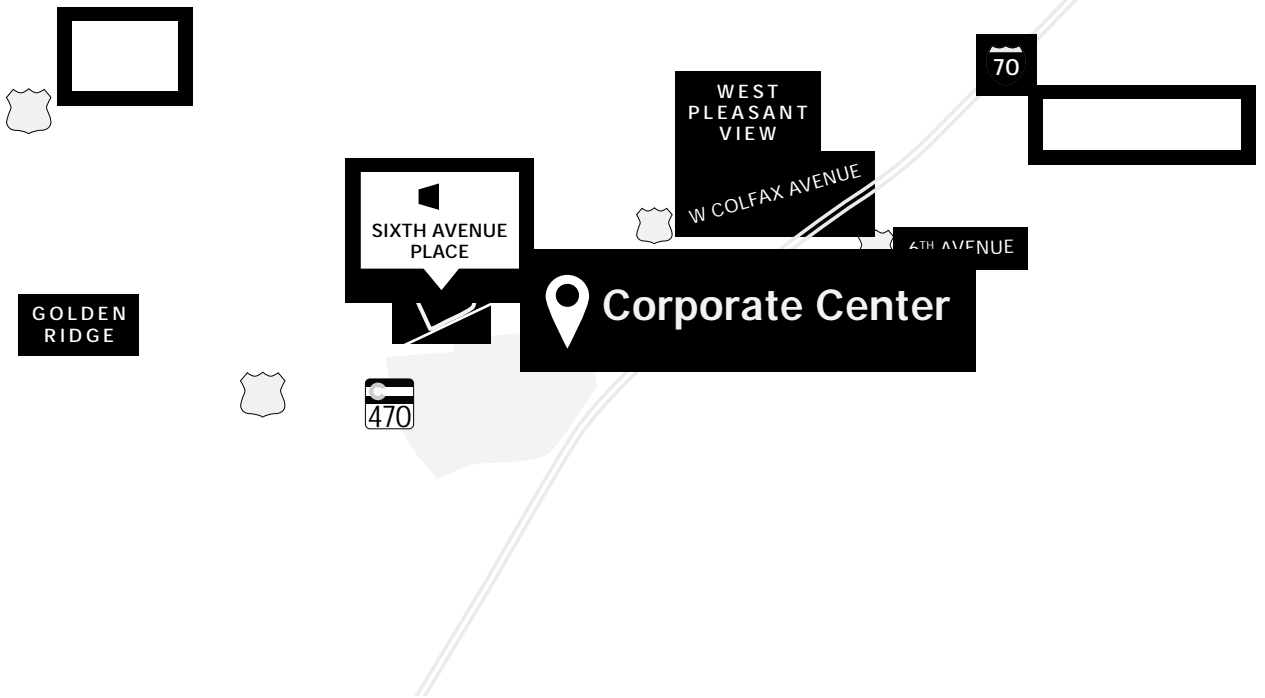


Note: This space plan is subject to existing field conditions. This drawing is proprietary and the exclusive property of St. John Properties, Inc. Any duplications, distribution, or other unauthorized use is strictly prohibited.

Note: Tenant additionally responsible for separately metered utilities, trash and janitorial services.

GOLDEN

APPLEWOOD



Distances to:

Boulder, CO	25 miles
Denver, CO (Downtown)	15 miles
Denver International Airport	35 miles
Denver Tech Center	20 miles
Federal Center	5 miles
Evergreen/Bergen Park	18 miles
Genessee, CO	7 miles
Vail, CO	85 miles



Scan with your mobile device to take a virtual tour, download floor plans and more!

Contact Us

For additional leasing information or to schedule a tour, contact:

Vince Furfaro
 Leasing Representative
 vfurfaro@sjpi.com
 303.278.7676

Brandon Jenkins
 Regional Partner, Colorado
 bjenkins@sjpi.com
 303.278.7676

Colorado Regional Office:
 500 Corporate Circle | Suite G
 Golden, CO 80401

303.278.7676 | SJPI.COM/COLORADO

About St. John Properties

St. John Properties Colorado owns and has developed more than 1.5 million square feet of commercial space across four business communities in the Denver metro area.

Headquartered in Baltimore, Maryland, St. John Properties has developed, constructed and owns more than 22 million square feet of office, ex/R&D, warehouse, retail and residential space.

Connect with us @stjohnprop



USGBC
MEMBER

This information contained in this publication has been obtained from sources believed to be reliable. St. John Properties makes no guarantee, warranty or representation about this information. Any projections, opinions, assumptions or estimates used here are for example only and do not represent the current or future performance of the property. Interested parties should conduct an independent investigation to determine whether the property suits their needs. REV 06/22